

**ND2 Antibody (N-term)**  
**Affinity Purified Rabbit Polyclonal Antibody (Pab)**  
**Catalog # AP9387a****Specification**

---

**ND2 Antibody (N-term) - Product Information**

Application	FC, IHC-P, WB,E
Primary Accession	<a href="#">P03891</a>
Reactivity	Human
Host	Rabbit
Clonality	Polyclonal
Isotype	Rabbit IgG
Antigen Region	31-59

**ND2 Antibody (N-term) - Additional Information****Gene ID** 4536**Other Names**

NADH-ubiquinone oxidoreductase chain 2, NADH dehydrogenase subunit 2, MT-ND2, MTND2, NADH2, ND2

**Target/Specificity**

This ND2 antibody is generated from rabbits immunized with a KLH conjugated synthetic peptide between 31-59 amino acids from the N-terminal region of human ND2.

**Dilution**

FC~~1:10~50

IHC-P~~1:50~100

WB~~1:1000

E~~Use at an assay dependent concentration.

**Format**

Purified polyclonal antibody supplied in PBS with 0.09% (W/V) sodium azide. This antibody is purified through a protein A column, followed by peptide affinity purification.

**Storage**

Maintain refrigerated at 2-8°C for up to 2 weeks. For long term storage store at -20°C in small aliquots to prevent freeze-thaw cycles.

**Precautions**

ND2 Antibody (N-term) is for research use only and not for use in diagnostic or therapeutic procedures.

**ND2 Antibody (N-term) - Protein Information****Name** MT-ND2 ([HGNC:7456](#))

**Synonyms** MTND2, NADH2, ND2

**Function** Core subunit of the mitochondrial membrane respiratory chain NADH dehydrogenase (Complex I) which catalyzes electron transfer from NADH through the respiratory chain, using ubiquinone as an electron acceptor (PubMed:[16996290](#)). Essential for the catalytic activity and assembly of complex I (PubMed:[16996290](#)).

**Cellular Location**

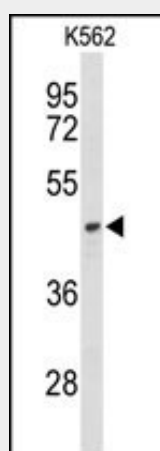
Mitochondrion inner membrane {ECO:0000250|UniProtKB:P03892}; Multi-pass membrane protein

**ND2 Antibody (N-term) - Protocols**

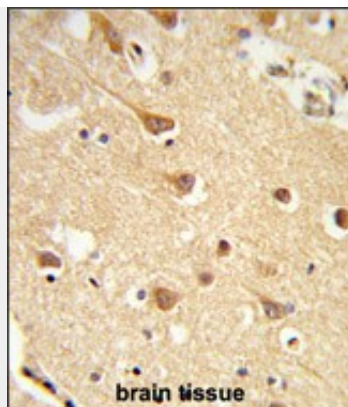
Provided below are standard protocols that you may find useful for product applications.

- [Western Blot](#)
- [Blocking Peptides](#)
- [Dot Blot](#)
- [Immunohistochemistry](#)
- [Immunofluorescence](#)
- [Immunoprecipitation](#)
- [Flow Cytometry](#)
- [Cell Culture](#)

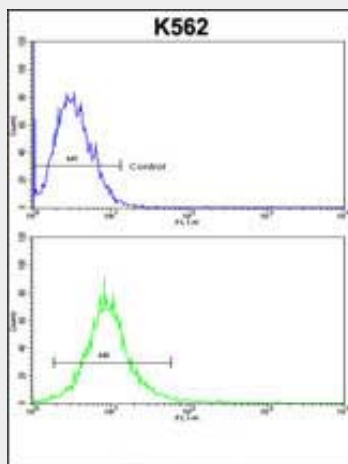
**ND2 Antibody (N-term) - Images**



Western blot analysis of ND2 Antibody (N-term) (Cat. #AP9387a) in K562 cell line lysates (35ug/lane). ND2 (arrow) was detected using the purified Pab.



Formalin-fixed and paraffin-embedded human brain tissue reacted with ND2 Antibody (N-term), which was peroxidase-conjugated to the secondary antibody, followed by DAB staining. This data demonstrates the use of this antibody for immunohistochemistry; clinical relevance has not been evaluated.



ND2 Antibody (N-term)(Cat. #AP9387a) flow cytometric analysis of k562 cells (bottom histogram) compared to a negative control cell (top histogram).FITC-conjugated goat-anti-rabbit secondary antibodies were used for the analysis.

### **ND2 Antibody (N-term) - Background**

ND2 is core subunit of the mitochondrial membrane respiratory chain NADH dehydrogenase (Complex I) that is believed to belong to the minimal assembly required for catalysis. This protein complex I functions in the transfer of electrons from NADH to the respiratory chain. The immediate electron acceptor for the enzyme is believed to be ubiquinone

### **ND2 Antibody (N-term) - References**

Saitoh,K., et.al., J. Mol. Evol. 63 (6), 826-841 (2006)