

LRRC50 (19T11) Mouse Monoclonal antibody
LRRC50 (19T11) Mouse Monoclonal antibody
Catalog # AP93911**Specification**

LRRC50 (19T11) Mouse Monoclonal antibody - Product Information

Application	WB, IF
Primary Accession	Q8NEP3
Reactivity	Human
Clonality	Monoclonal
Calculated MW	80026

LRRC50 (19T11) Mouse Monoclonal antibody - Additional Information**Gene ID** 123872**Other Names**

Dynein axonemal assembly factor 1, Leucine-rich repeat-containing protein 50, DNAAF1, LRRC50

Dilution

WB~~1:1000

IF~~1:50~200

Storage Conditions

-20°C

LRRC50 (19T11) Mouse Monoclonal antibody - Protein Information**Name** DNAAF1**Synonyms** LRRC50**Function**

Cilium-specific protein required for the stability of the ciliary architecture. Plays a role in cytoplasmic preassembly of dynein arms. Involved in regulation of microtubule-based cilia and actin-based brush border microvilli.

Cellular Location

Cell projection, cilium. Cytoplasm Cytoplasm, cytoskeleton, spindle pole Note=In HEK293T cells, it is diffusely cytoplasmic and concentrates at the mitotic spindle poles, while in MDCK cells, it localizes in the cilium. In vivo, this protein is probably restricted to the cilium

Tissue Location

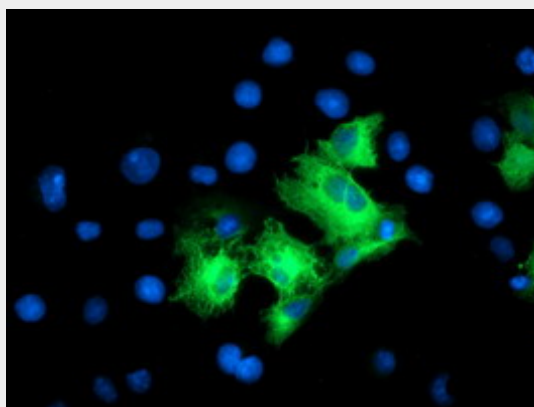
Mainly expressed in trachea and testis.

LRRC50 (19T11) Mouse Monoclonal antibody - Protocols

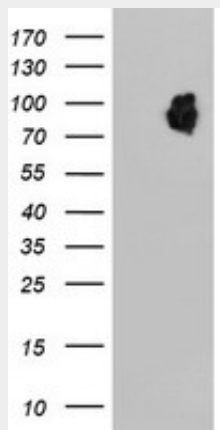
Provided below are standard protocols that you may find useful for product applications.

- [Western Blot](#)
- [Blocking Peptides](#)
- [Dot Blot](#)
- [Immunohistochemistry](#)
- [Immunofluorescence](#)
- [Immunoprecipitation](#)
- [Flow Cytometry](#)
- [Cell Culture](#)

LRRC50 (19T11) Mouse Monoclonal antibody - Images



Anti-LRRC50 mouse monoclonal antibody (AP93911) immunofluorescent staining of COS7 cells transiently transfected by pCMV6-ENTRY LRRC50 .



HEK293T cells were transfected with the pCMV6-ENTRY control (Left lane) or pCMV6-ENTRY LRRC50 (Right lane) cDNA for 48 hrs and lysed. Equivalent amounts of cell lysates (5 ug per lane) were separated by SDS-PAGE and immunoblotted with anti-LRRC50. Positive lysates (100ug) and (20ug) can be purchased separately from biodragon.

LRRC50 (19T11) Mouse Monoclonal antibody - Background

The protein encoded by this gene is cilium-specific and is required for the stability of the ciliary architecture. It is involved in the regulation of microtubule-based cilia and actin-based brush border microvilli. Mutations in this gene are associated with primary ciliary dyskinesia-13. COMPLETENESS: complete on the 3' end.