

IRS1 Rabbit pAb
IRS1 Rabbit pAb
Catalog # AP93941**Specification**

IRS1 Rabbit pAb - Product Information

Application	IHC-P
Primary Accession	P35570
Reactivity	Rat
Host	Rabbit
Clonality	Polyclonal
Calculated MW	131178

IRS1 Rabbit pAb - Additional Information**Gene ID** 25467**Other Names**

Insulin receptor substrate 1, IRS-1, pp185, Irs1, Irs-1

Format

0.01M TBS(pH7.4), 0.09% (W/V) sodium azide and 50% Glyce

Storage

Store at -20 °C for one year. Avoid repeated freeze/thaw cycles. When reconstituted in sterile pH 7.4 0.01M PBS or diluent of antibody the antibody is stable for at least two weeks at 2-4 °C.

IRS1 Rabbit pAb - Protein Information**Name** Irs1**Synonyms** Irs-1**Function**

Signaling adapter protein that participates in the signal transduction from two prominent receptor tyrosine kinases, insulin receptor/INSR and insulin-like growth factor I receptor/IGF1R (PubMed:12399410). Plays therefore an important role in development, growth, glucose homeostasis as well as lipid metabolism. Upon phosphorylation by the insulin receptor, functions as a signaling scaffold that propagates insulin action through binding to SH2 domain- containing proteins including the p85 regulatory subunit of PI3K, NCK1, NCK2, GRB2 or SHP2 (PubMed:1380456). Recruitment of GRB2 leads to the activation of the guanine nucleotide exchange factor SOS1 which in turn triggers the Ras/Raf/MEK/MAPK signaling cascade (PubMed:8491186). Activation of the PI3K/AKT pathway is responsible for most of insulin metabolic effects in the cell, and the Ras/Raf/MEK/MAPK is involved in the regulation of gene expression and in cooperation with the PI3K pathway regulates cell growth and differentiation (By similarity). Acts a positive regulator of

the Wnt/beta-catenin signaling pathway through suppression of DVL2 autophagy-mediated degradation leading to cell proliferation (By similarity).

Cellular Location

Cytoplasm {ECO:0000250|UniProtKB:P35568}. Nucleus {ECO:0000250|UniProtKB:P35568}.

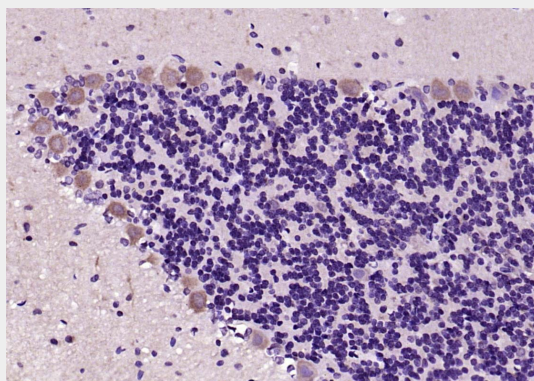
Note=Nuclear or cytoplasmic localization of IRS1 correlates with the transition from proliferation to chondrogenic differentiation. {ECO:0000250|UniProtKB:P35568}

IRS1 Rabbit pAb - Protocols

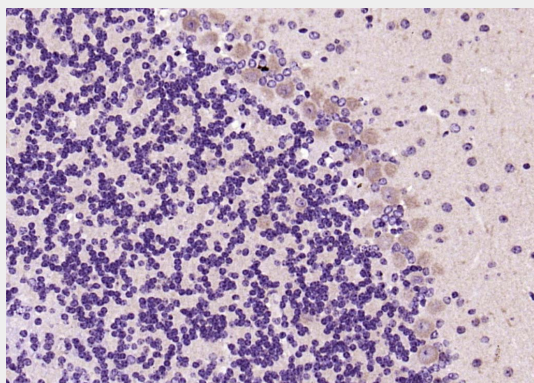
Provided below are standard protocols that you may find useful for product applications.

- [Western Blot](#)
- [Blocking Peptides](#)
- [Dot Blot](#)
- [Immunohistochemistry](#)
- [Immunofluorescence](#)
- [Immunoprecipitation](#)
- [Flow Cytometry](#)
- [Cell Culture](#)

IRS1 Rabbit pAb - Images

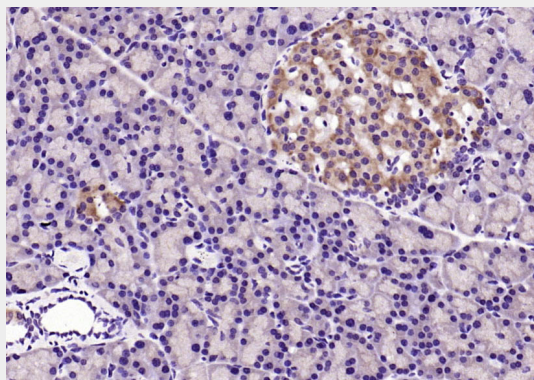


Paraformaldehyde-fixed, paraffin embedded Rat Cerebellum; Antigen retrieval by boiling in sodium citrate buffer (pH6.0) for 15 min; Antibody incubation with IRS1 Polyclonal Antibody, Unconjugated (AP93941) at 1:200 overnight at 4°C, followed by conjugation to the SP Kit (Rabbit, SP-0023) and DAB (C-0010) staining.

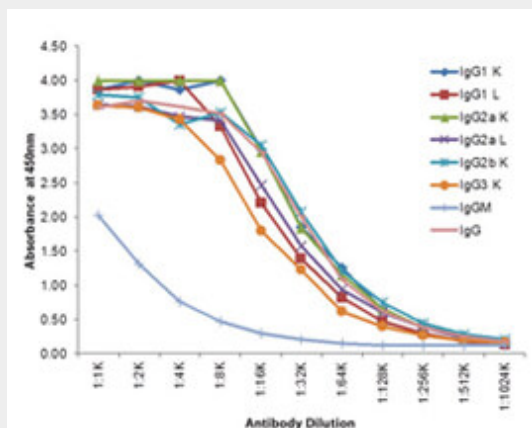


Paraformaldehyde-fixed, paraffin embedded Mouse Cerebellum; Antigen retrieval by boiling in

sodium citrate buffer (pH6.0) for 15 min; Antibody incubation with IRS1 Polyclonal Antibody, Unconjugated (AP93941) at 1:200 overnight at 4°C, followed by conjugation to the SP Kit (Rabbit, SP-0023) and DAB (C-0010) staining.



Paraformaldehyde-fixed, paraffin embedded Mouse Pancreas; Antigen retrieval by boiling in sodium citrate buffer (pH6.0) for 15 min; Antibody incubation with IRS1 Polyclonal Antibody, Unconjugated (AP93941) at 1:200 overnight at 4°C, followed by conjugation to the SP Kit (Rabbit, SP-0023) and DAB (C-0010) staining.



Indirect ELISA of Rabbit Anti-Mouse IgG (gamma 1, 2a, 2b, and 3) antibody. Antigen: purified mouse IgG heavy and light chains. Coating amount: 0.1 µg per well. Primary antibody: Rabbit Anti-Mouse IgG (Gamma 1, 2a, 2b, and 3) HRP conjugated Antibody. Dilution series: 2-fold. Substrate: TMB (p/n TMBE-0100).

IRS1 Rabbit pAb - Background

This product as supplied is intended for research use only, not for use in human, therapeutic or diagnostic applications.