

CCL26 Signal peptide Rabbit pAb
CCL26 Signal peptide Rabbit pAb
Catalog # AP93947**Specification**

CCL26 Signal peptide Rabbit pAb - Product Information

Application	IHC-P
Reactivity	Rat
Host	Rabbit
Clonality	Polyclonal

CCL26 Signal peptide Rabbit pAb - Additional Information**Format**

0.01M TBS(pH7.4), 0.09% (W/V) sodium azide and 50% Glyce

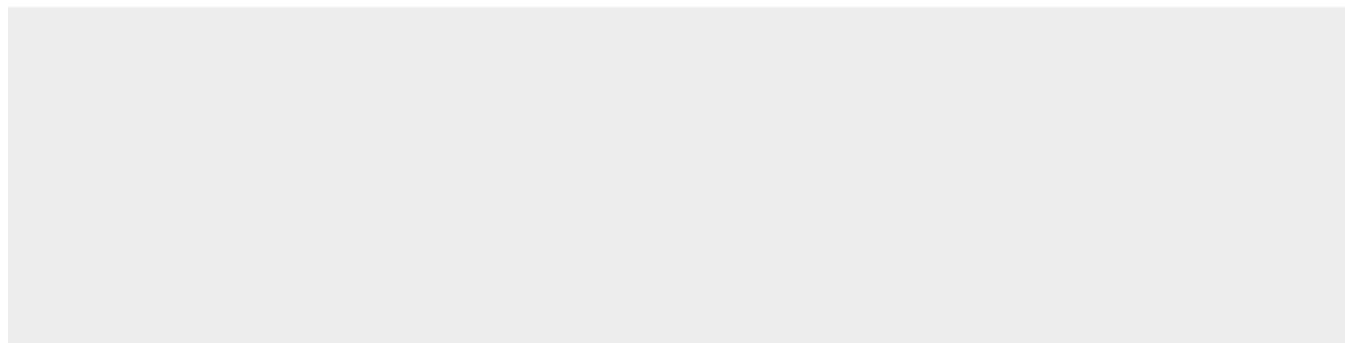
Storage

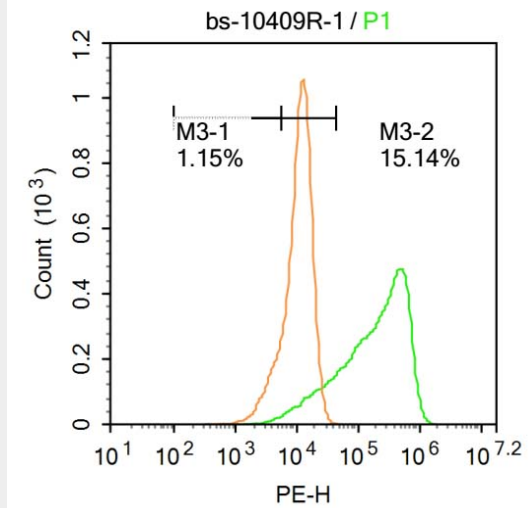
Store at -20 °C for one year. Avoid repeated freeze/thaw cycles. When reconstituted in sterile pH 7.4 0.01M PBS or diluent of antibody the antibody is stable for at least two weeks at 2-4 °C.

CCL26 Signal peptide Rabbit pAb - Protein Information**CCL26 Signal peptide Rabbit pAb - Protocols**

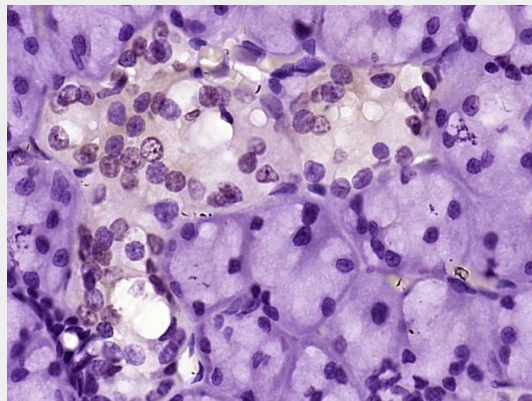
Provided below are standard protocols that you may find useful for product applications.

- [Western Blot](#)
- [Blocking Peptides](#)
- [Dot Blot](#)
- [Immunohistochemistry](#)
- [Immunofluorescence](#)
- [Immunoprecipitation](#)
- [Flow Cytometry](#)
- [Cell Culture](#)

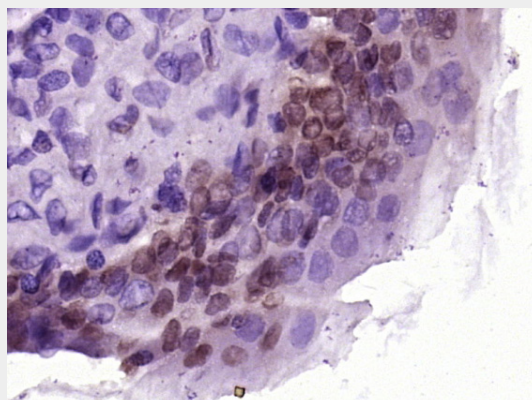
CCL26 Signal peptide Rabbit pAb - Images



Blank control:U-2OS. Primary Antibody (green line): Rabbit Anti-CCL26 antibody (AP93947) Dilution: $1 \mu\text{g} / 10^6$ cells; Isotype Control Antibody (orange line): Rabbit IgG . Secondary Antibody : Goat anti-rabbit IgG-PE Dilution: $1 \mu\text{g} / \text{test}$. Protocol The cells were fixed with 4% PFA (10min at room temperature)and then permeabilized with 20% PBST for 20 min at room temperature. The cells were then incubated in 5%BSA to block non-specific protein-protein interactions for 30 min at at room temperature .Cells stained with Primary Antibody for 30 min at room temperature. The secondary antibody used for 40 min at room temperature. Acquisition of 20,000 events was performed.



Paraformaldehyde-fixed, paraffin embedded (Rat thyroid gland); Antigen retrieval by boiling in sodium citrate buffer (pH6.0) for 15min; Block endogenous peroxidase by 3% hydrogen peroxide for 20 minutes; Blocking buffer (normal goat serum) at 37°C for 30min; Antibody incubation with (CCL26 Signal peptide) Polyclonal Antibody, Unconjugated (AP93947) at 1:400 overnight at 4°C , followed by operating according to SP Kit(Rabbit) (sp-0023) instructionsand DAB staining.



Paraformaldehyde-fixed, paraffin embedded (Rat urinary bladder); Antigen retrieval by boiling in sodium citrate buffer (pH6.0) for 15min; Block endogenous peroxidase by 3% hydrogen peroxide for 20 minutes; Blocking buffer (normal goat serum) at 37°C for 30min; Antibody incubation with (CCL26 Signal peptide) Polyclonal Antibody, Unconjugated (AP93947) at 1:400 overnight at 4°C, followed by operating according to SP Kit(Rabbit) (sp-0023) instructions and DAB staining.

CCL26 Signal peptide Rabbit pAb - Background

This product as supplied is intended for research use only, not for use in human, therapeutic or diagnostic applications.