

PPP2R3 Rabbit pAb
PPP2R3 Rabbit pAb
Catalog # AP93964

Specification

PPP2R3 Rabbit pAb - Product Information

Application	WB, IHC-P, IHC-F, IF
Primary Accession	Q06190.1
Reactivity	Human
Host	Rabbit
Clonality	Polyclonal
Calculated MW	130 KDa
Physical State	Liquid
Immunogen	KLH conjugated synthetic peptide derived from human PPP2R3
Epitope Specificity	801-900/1150
Isotype	IgG
Purity	
affinity purified by Protein A	
Buffer	0.01M TBS (pH7.4) with 1% BSA, 0.02% Proclin300 and 50% Glycerol.
SIMILARITY	Contains 2 EF-hand domains.
SUBUNIT	PP2A consists of a common heterodimeric core enzyme, composed of a 36 kDa catalytic subunit (subunit C) and a 65 kDa constant regulatory subunit (PR65 or subunit A), that associates with a variety of regulatory subunits. Proteins that associate with the core dimer include three families of regulatory subunits B (the R2/B/PR55/B55, R3/B''/PR72/PR130/PR59 and R5/B'/B56 families), the 48 kDa variable regulatory subunit, viral proteins, and cell signaling molecules.
Important Note	This product as supplied is intended for research use only, not for use in human, therapeutic or diagnostic applications.

Background Descriptions

The B regulatory subunit might modulate substrate selectivity and catalytic activity, and also might direct the localization of the catalytic enzyme to a particular subcellular compartment.

PPP2R3 Rabbit pAb - Additional Information

Target/Specificity

Expressed in heart, brain, placenta, lung, muscle and kidney.

Dilution

WB~1:1000<br \><span class

=IHC-P~~N/A<br \>IHC-F~~N/A<br \>IF~~1:50~200

Format

0.01M TBS(pH7.4), 0.09% (W/V) sodium azide and 50% Glyce

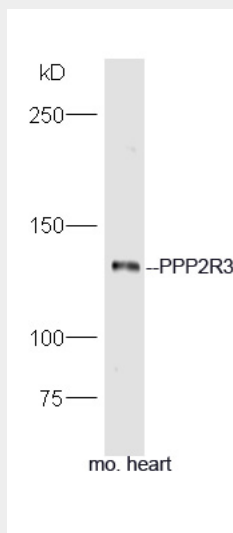
Storage

Store at -20 °C for one year. Avoid repeated freeze/thaw cycles. When reconstituted in sterile pH 7.4 0.01M PBS or diluent of antibody the antibody is stable for at least two weeks at 2-4 °C.

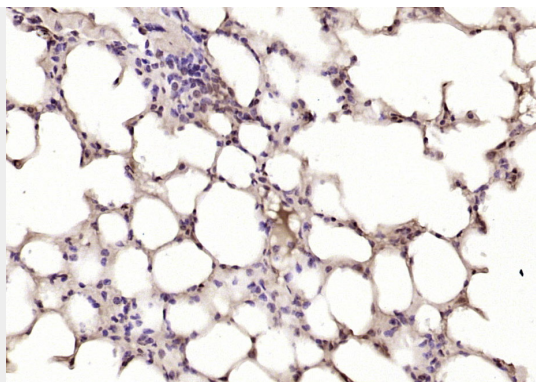
PPP2R3 Rabbit pAb - Protein Information**PPP2R3 Rabbit pAb - Protocols**

Provided below are standard protocols that you may find useful for product applications.

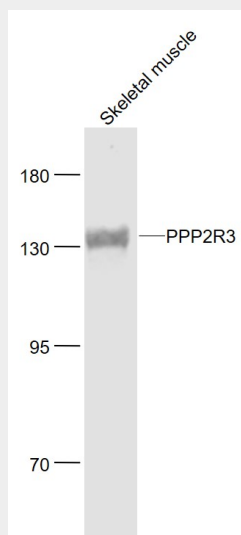
- [Western Blot](#)
- [Blocking Peptides](#)
- [Dot Blot](#)
- [Immunohistochemistry](#)
- [Immunofluorescence](#)
- [Immunoprecipitation](#)
- [Flow Cytometry](#)
- [Cell Culture](#)

PPP2R3 Rabbit pAb - Images

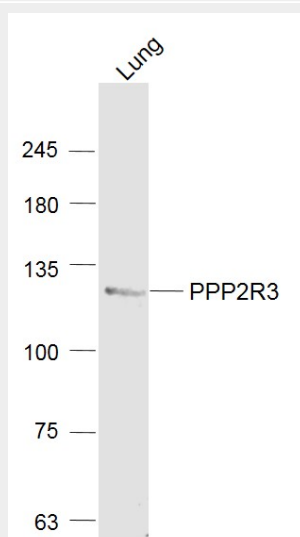
Sample: Heart (Mouse) Lysate at 40 ug Primary: Anti-PPP2R3 (AP93964) at 1/300 dilution
Secondary: HRP conjugated Goat-Anti-rabbit IgG (bs-0295G-HRP) at 1/5000 dilution Predicted
band size: 130 kD Observed band size: 130 kD



Paraformaldehyde-fixed, paraffin embedded (mouse lung); Antigen retrieval by boiling in sodium citrate buffer (pH6.0) for 15min; Block endogenous peroxidase by 3% hydrogen peroxide for 20 minutes; Blocking buffer (normal goat serum) at 37°C for 30min; Antibody incubation with (PPP2R3) Polyclonal Antibody, Unconjugated (AP93964) at 1:200 overnight at 4°C, followed by operating according to SP Kit(Rabbit) (sp-0023) instructions and DAB staining.



Sample: Skeletal muscle (Mouse) Lysate at 40 ug Primary: Anti- PPP2R3 (AP93964) at 1/1000 dilution Secondary: IRDye800CW Goat Anti-Rabbit IgG at 1/20000 dilution Predicted band size: 130 kD Observed band size: 130 kD



Sample: Lung (Mouse) Lysate at 40 ug Primary: Anti- PPP2R3 (AP93964) at 1/1000 dilution
Secondary: IRDye800CW Goat Anti-Rabbit IgG at 1/20000 dilution Predicted band size: 130 kD
Observed band size: 130 kD

PPP2R3 Rabbit pAb - Background

This product as supplied is intended for research use only, not for use in human, therapeutic or diagnostic applications.