

BRN3B Rabbit pAb
BRN3B Rabbit pAb
Catalog # AP93966

Specification

BRN3B Rabbit pAb - Product Information

Application	IHC-P, IHC-F, IF
Primary Accession	Q12837.2
Reactivity	Human
Host	Rabbit
Clonality	Polyclonal
Calculated MW	41 KDa
Physical State	Liquid
Immunogen	KLH conjugated synthetic peptide derived from human BRN3B
Epitope Specificity	301-400/409
Isotype	IgG
Purity	
affinity purified by Protein A	
Buffer	0.01M TBS (pH7.4) with 1% BSA, 0.02% Proclin300 and 50% Glycerol.
SUBCELLULAR LOCATION	Nucleus speckle.
SIMILARITY	Belongs to the POU transcription factor family. Class-4 subfamily. Contains 1 homeobox DNA-binding domain. Contains 1 POU-specific domain.
Important Note	This product as supplied is intended for research use only, not for use in human, therapeutic or diagnostic applications.

Background Descriptions

The Brn family of transcription factors are found in a highly restricted subset of neurons and are critical to the early embryonic development of the central nervous system. Brn-1 and Brn-2 are class III POU (Pit-Oct-Unc) domain proteins, whereas Brn-3 is a class IV POU domain protein. Three Brn-3 proteins have been described and are designated Brn-3a, Brn-3b and Brn-3c. While Brn-3a and Brn-3c stimulate transcription, Brn-3b generally functions as a transcriptional repressor. However, Brn-3b, but not Brn-3a, has been shown to regulate the expression of the acetylcholine receptor. Interestingly, Brn-3a has two functional transactivating domains, one at the amino-terminus and one at the carboxy-terminus. Brn-2 is thought to be involved in smooth muscle cell development and differentiation.

BRN3B Rabbit pAb - Additional Information

Target/Specificity

Brain. Seems to be specific to the retina.

Dilution

IHC-P~~N/A
IHC-F~~N/A
IF~~1:50~200

Format

0.01M TBS(pH7.4), 0.09% (W/V) sodium azide and 50% Glyce

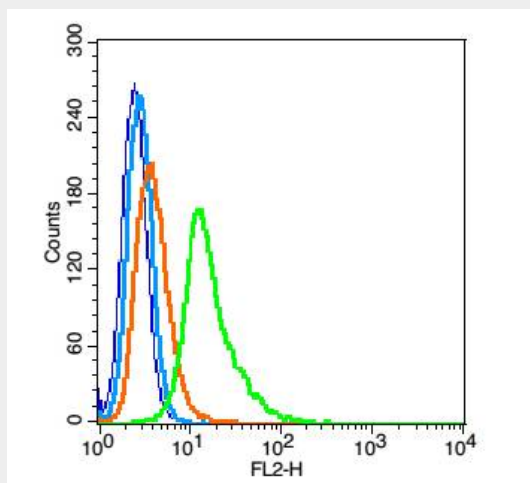
Storage

Store at -20 °C for one year. Avoid repeated freeze/thaw cycles. When reconstituted in sterile pH 7.4 0.01M PBS or diluent of antibody the antibody is stable for at least two weeks at 2-4 °C.

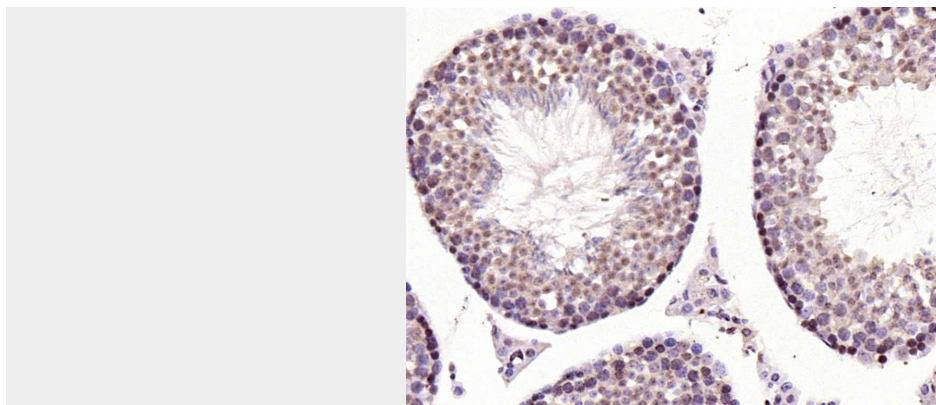
BRN3B Rabbit pAb - Protein Information**BRN3B Rabbit pAb - Protocols**

Provided below are standard protocols that you may find useful for product applications.

- [Western Blot](#)
- [Blocking Peptides](#)
- [Dot Blot](#)
- [Immunohistochemistry](#)
- [Immunofluorescence](#)
- [Immunoprecipitation](#)
- [Flow Cytometry](#)
- [Cell Culture](#)

BRN3B Rabbit pAb - Images

Blank control: RSC96(fixed with 2% paraformaldehyde (10 min) and then permeabilized with ice-cold 90% methanol for 30 min on ice). Primary Antibody: Rabbit Anti-BRN3B antibody(AP93966), Dilution: 1 µg in 100 µL 1X PBS containing 0.5% BSA; Isotype Control Antibody: Rabbit IgG(orange) ,used under the same conditions); Secondary Antibody: Goat anti-rabbit IgG-PE(white blue), Dilution: 1:200 in 1 X PBS containing 0.5% BSA.



Paraformaldehyde-fixed, paraffin embedded (mouse testis); Antigen retrieval by boiling in sodium citrate buffer (pH6.0) for 15min; Block endogenous peroxidase by 3% hydrogen peroxide for 20 minutes; Blocking buffer (normal goat serum) at 37°C for 30min; Antibody incubation with (BRN3B) Polyclonal Antibody, Unconjugated (AP93966) at 1:200 overnight at 4°C, followed by operating according to SP Kit(Rabbit) (sp-0023) instructions and DAB staining.

BRN3B Rabbit pAb - Background

This product as supplied is intended for research use only, not for use in human, therapeutic or diagnostic applications.