

RSL1D1 Rabbit pAb
RSL1D1 Rabbit pAb
Catalog # AP93974**Specification**

RSL1D1 Rabbit pAb - Product Information

Application	IHC-P, WB
Reactivity	Mouse
Host	Rabbit
Clonality	Polyclonal

RSL1D1 Rabbit pAb - Additional Information**Format**

0.01M TBS(pH7.4), 0.09% (W/V) sodium azide and 50% Glyce

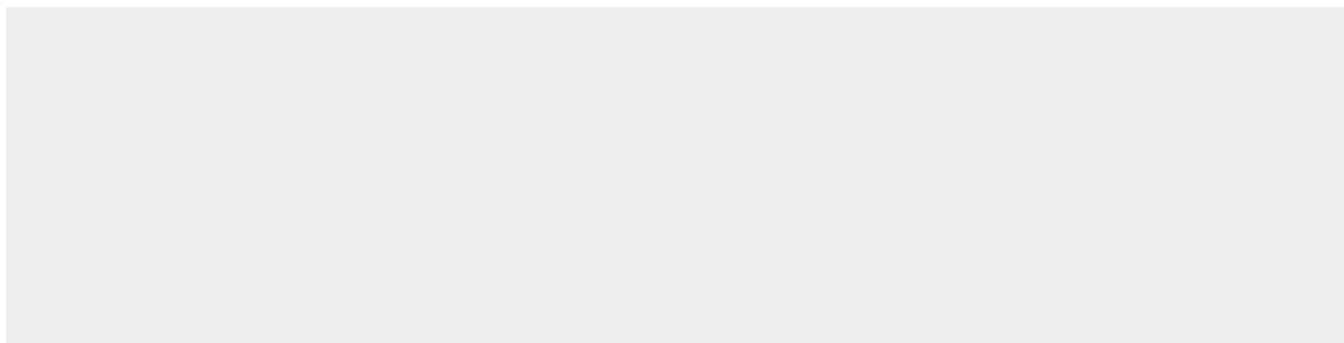
Storage

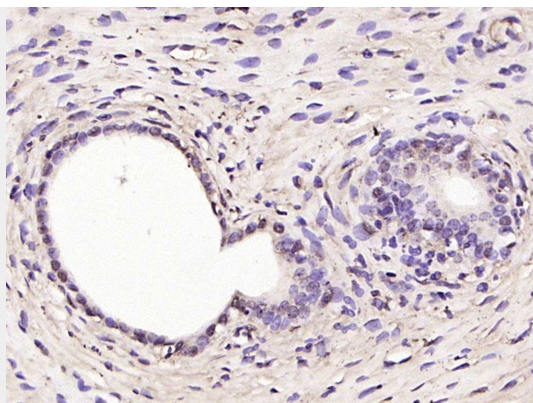
Store at -20 °C for one year. Avoid repeated freeze/thaw cycles. When reconstituted in sterile pH 7.4 0.01M PBS or diluent of antibody the antibody is stable for at least two weeks at 2-4 °C.

RSL1D1 Rabbit pAb - Protein Information**RSL1D1 Rabbit pAb - Protocols**

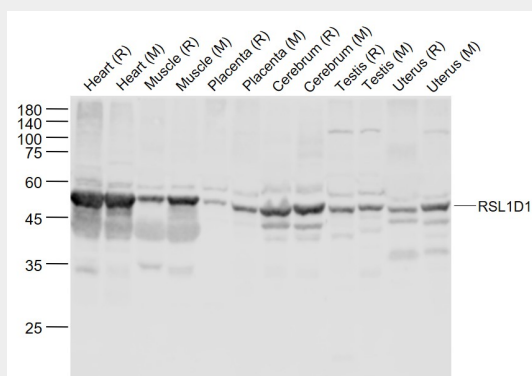
Provided below are standard protocols that you may find useful for product applications.

- [Western Blot](#)
- [Blocking Peptides](#)
- [Dot Blot](#)
- [Immunohistochemistry](#)
- [Immunofluorescence](#)
- [Immunoprecipitation](#)
- [Flow Cytometry](#)
- [Cell Culture](#)

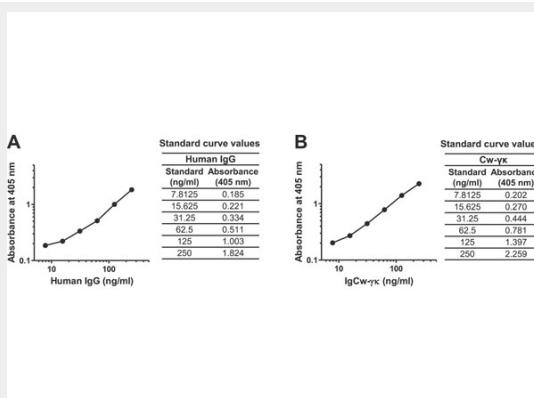
RSL1D1 Rabbit pAb - Images



Paraformaldehyde-fixed, paraffin embedded (rat uterus); Antigen retrieval by boiling in sodium citrate buffer (pH6.0) for 15min; Block endogenous peroxidase by 3% hydrogen peroxide for 20 minutes; Blocking buffer (normal goat serum) at 37°C for 30min; Antibody incubation with (RSL1D1) Polyclonal Antibody, Unconjugated (AP93974) at 1:200 overnight at 4°C, followed by operating according to SP Kit(Rabbit) (sp-0023) instructions and DAB staining.



Sample: Lane 1: Heart (Rat) Lysate at 40 ug Lane 2: Heart (Mouse) Lysate at 40 ug Lane 3: Muscle (Rat) Lysate at 40 ug Lane 4: Muscle (Mouse) Lysate at 40 ug Lane 5: Placenta (Rat) Lysate at 40 ug Lane 6: Placenta (Mouse) Lysate at 40 ug Lane 7: Cerebrum (Rat) Lysate at 40 ug Lane 8: Cerebrum (Mouse) Lysate at 40 ug Lane 9: Testis (Rat) Lysate at 40 ug Lane 10: Testis (Mouse) Lysate at 40 ug Lane 11: Uterus (Rat) Lysate at 40 ug Lane 12: Uterus (Mouse) Lysate at 40 ug Primary: Anti-RSL1D1 (AP93974) at 1/1000 dilution Secondary: IRDye800CW Goat Anti-Rabbit IgG at 1/20000 dilution Predicted band size: 55 kD Observed band size: 52 kD



Standard curves generated using the respective human IgG and IgCw-γκ. ELISA data from the right-hand panels were used to plot the log graphs. Human IgG and IgCw-γ with known concentrations were placed in wells coated with goat anti-human IgG/Fc antibody as a capture antibody, and bound Ig molecules were detected with AP-conjugated goat anti-human Ck antibody

F (ab')₂ as a detection antibody. Data are presented as mean \pm SD, n = 3. Fig. 4. PMID: 30910358.

RSL1D1 Rabbit pAb - Background

This product as supplied is intended for research use only, not for use in human, therapeutic or diagnostic applications.