

**VDAC1 Recombinant Rabbit mAb, Mitochondrial Loading Control**  
**VDAC1 Recombinant Rabbit mAb, Mitochondrial Loading Control**  
**Catalog # AP93983**

**Specification**

**VDAC1 Recombinant Rabbit mAb, Mitochondrial Loading Control - Product Information**

Application	WB, IHC-P, IHC-F, IF
Reactivity	Human
Host	Rabbit
Clonality	Recombinant
Calculated MW	32 KDa
Physical State	Liquid
Immunogen	A synthesized peptide derived from human VDAC1
Epitope Specificity	1-66
Isotype	IgG
<b>Purity</b>	
affinity purified by Protein A	
Buffer	0.01M TBS (pH7.4) with 1% BSA, 0.02% Proclin300 and 50% Glycerol.
SUBCELLULAR LOCATION	Cytoplasm. Endosome membrane; Peripheral membrane protein (Probable). Belongs to the VTA1 family.
SIMILARITY	Interacts with VPS4B. Interacts with CHMP1B. Interacts with CHMP2A; the interaction probably involves the open conformation of (polymerized) CHMP2A. May interact with CHMP3. Interacts with CHMP5; the interaction involves soluble CHMP5. Interacts with IST1.
SUBUNIT	
Important Note	This product as supplied is intended for research use only, not for use in human, therapeutic or diagnostic applications.

**Background Descriptions**

Voltage dependent anion selective channel protein 1 (VDAC/Porin) belongs to the eukaryotic mitochondrial porin family and forms a channel through the mitochondrial outer membrane and also the plasma membrane. The channel allows diffusion of small hydrophilic molecules; it adopts an open conformation at low or zero membrane potential and a closed conformation at potentials above 30-40 mV. The open state has a weak anion selectivity whereas the closed state is cation selective. VDAC/Porin expression is observed in the heart,liver and skeletal muscle.

**VDAC1 Recombinant Rabbit mAb, Mitochondrial Loading Control - Additional Information**

**Dilution**

<span class = "dilution\_WB">WB~~1:1000</span><br \><span class = "dilution\_IHC-P">IHC-P~~N/A</span><br \><span class = "dilution\_IHC-F">IHC-F~~N/A</span><br \><span class = "dilution\_IF">IF~~1:50~200</span>

**Format**

0.01M TBS(pH7.4), 0.09% (W/V) sodium azide and 50% Glyce

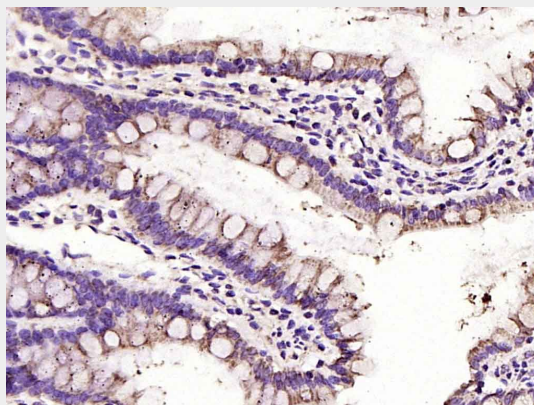
**Storage**

Store at -20 °C for one year. Avoid repeated freeze/thaw cycles. When reconstituted in sterile pH 7.4 0.01M PBS or diluent of antibody the antibody is stable for at least two weeks at 2-4 °C.

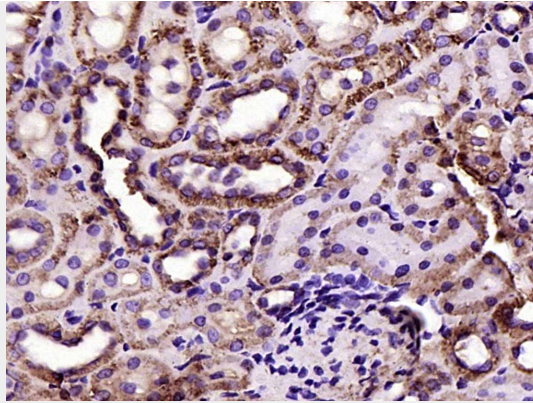
**VDAC1 Recombinant Rabbit mAb, Mitochondrial Loading Control - Protein Information****VDAC1 Recombinant Rabbit mAb, Mitochondrial Loading Control - Protocols**

Provided below are standard protocols that you may find useful for product applications.

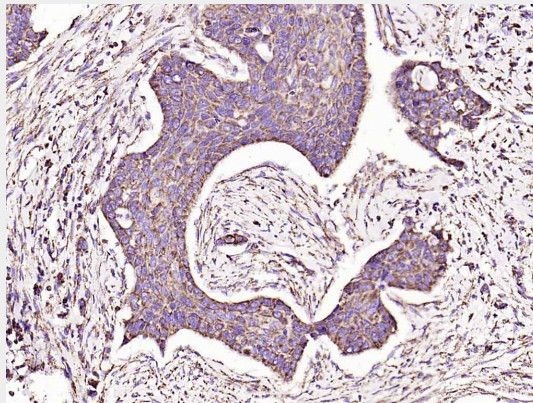
- [Western Blot](#)
- [Blocking Peptides](#)
- [Dot Blot](#)
- [Immunohistochemistry](#)
- [Immunofluorescence](#)
- [Immunoprecipitation](#)
- [Flow Cytometry](#)
- [Cell Culture](#)

**VDAC1 Recombinant Rabbit mAb, Mitochondrial Loading Control - Images**

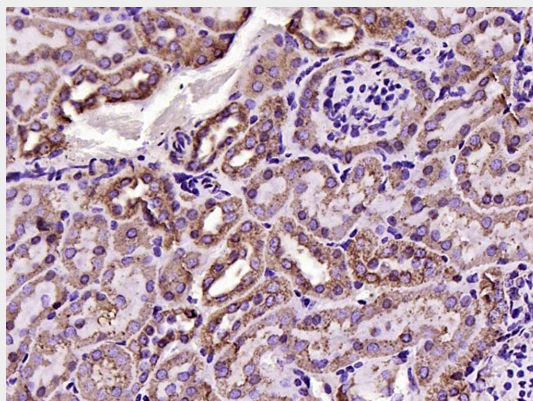
Paraformaldehyde-fixed, paraffin embedded (rat small intestine); Antigen retrieval by boiling in sodium citrate buffer (pH6.0) for 15min; Block endogenous peroxidase by 3% hydrogen peroxide for 20 minutes; Blocking buffer (normal goat serum) at 37°C for 30min; Antibody incubation with (VDAC1) Monoclonal Antibody, Unconjugated (AP93983) at 1:200 overnight at 4°C, followed by operating according to SP Kit(Rabbit) (sp-0023) instructions and DAB staining.



Paraformaldehyde-fixed, paraffin embedded (rat kidney); Antigen retrieval by boiling in sodium citrate buffer (pH6.0) for 15min; Block endogenous peroxidase by 3% hydrogen peroxide for 20 minutes; Blocking buffer (normal goat serum) at 37°C for 30min; Antibody incubation with (VDAC1) Monoclonal Antibody, Unconjugated (AP93983) at 1:200 overnight at 4°C, followed by operating according to SP Kit(Rabbit) (sp-0023) instructions and DAB staining.

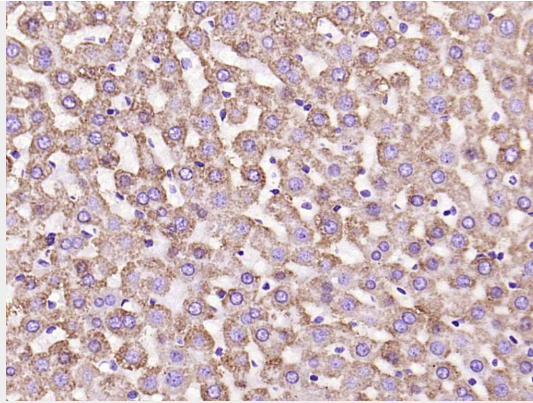


Paraformaldehyde-fixed, paraffin embedded (Human esophageal cancer); Antigen retrieval by boiling in sodium citrate buffer (pH6.0) for 15min; Block endogenous peroxidase by 3% hydrogen peroxide for 20 minutes; Blocking buffer (normal goat serum) at 37°C for 30min; Antibody incubation with (VDAC1) Monoclonal Antibody, Unconjugated (AP93983) at 1:200 overnight at 4°C, followed by operating according to SP Kit(Rabbit) (sp-0023) instructions and DAB staining.

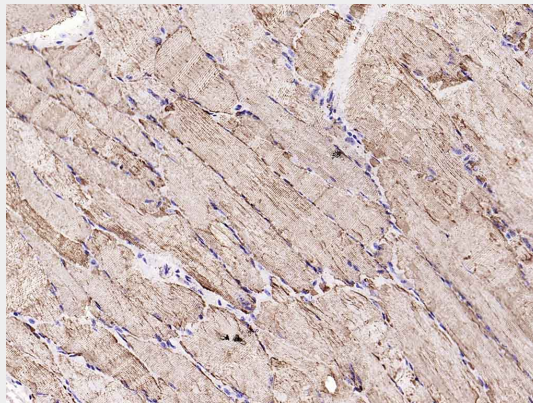


Paraformaldehyde-fixed, paraffin embedded (mouse kidney); Antigen retrieval by boiling in sodium citrate buffer (pH6.0) for 15min; Block endogenous peroxidase by 3% hydrogen peroxide for 20 minutes; Blocking buffer (normal goat serum) at 37°C for 30min; Antibody incubation with (VDAC1) Monoclonal Antibody, Unconjugated (AP93983) at 1:200 overnight at 4°C, followed by operating according to SP Kit(Rabbit) (sp-0023) instructions and DAB staining.

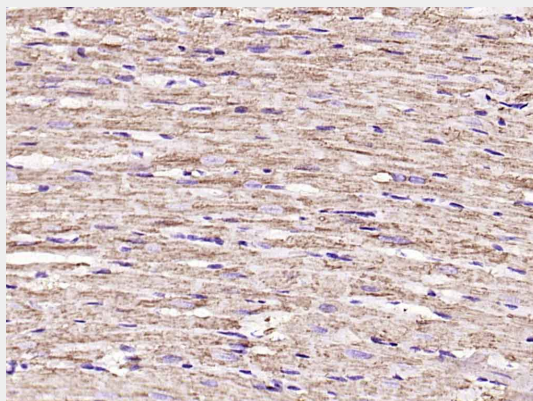




Paraformaldehyde-fixed, paraffin embedded (rat liver); Antigen retrieval by boiling in sodium citrate buffer (pH6.0) for 15min; Block endogenous peroxidase by 3% hydrogen peroxide for 20 minutes; Blocking buffer (normal goat serum) at 37°C for 30min; Antibody incubation with (VDAC1) Monoclonal Antibody, Unconjugated (AP93983) at 1:200 overnight at 4°C, followed by operating according to SP Kit(Rabbit) (sp-0023) instructions and DAB staining.



Paraformaldehyde-fixed, paraffin embedded (rat skeletal muscle); Antigen retrieval by boiling in sodium citrate buffer (pH6.0) for 15min; Block endogenous peroxidase by 3% hydrogen peroxide for 20 minutes; Blocking buffer (normal goat serum) at 37°C for 30min; Antibody incubation with (VDAC1) Monoclonal Antibody, Unconjugated (AP93983) at 1:200 overnight at 4°C, followed by operating according to SP Kit(Rabbit) (sp-0023) instructions and DAB staining.



Paraformaldehyde-fixed, paraffin embedded (rat heart); Antigen retrieval by boiling in sodium citrate buffer (pH6.0) for 15min; Block endogenous peroxidase by 3% hydrogen peroxide for 20 minutes; Blocking buffer (normal goat serum) at 37°C for 30min; Antibody incubation with (VDAC1) Monoclonal Antibody, Unconjugated (AP93983) at 1:200 overnight at 4°C, followed by operating according to SP Kit(Rabbit) (sp-0023) instructions and DAB staining.

## **VDAC1 Recombinant Rabbit mAb, Mitochondrial Loading Control - Background**

This product as supplied is intended for research use only, not for use in human, therapeutic or diagnostic applications.