

DIAPH2 Antibody (Center)
Affinity Purified Rabbit Polyclonal Antibody (Pab)
Catalog # AP9407c**Specification**

DIAPH2 Antibody (Center) - Product Information

Application	WB, IHC-P, FC,E
Primary Accession	O60879
Reactivity	Human
Host	Rabbit
Clonality	Polyclonal
Isotype	Rabbit IgG
Calculated MW	125569
Antigen Region	870-899

DIAPH2 Antibody (Center) - Additional Information**Gene ID** 1730**Other Names**

Protein diaphanous homolog 2, Diaphanous-related formin-2, DRF2, DIAPH2, DIA

Target/Specificity

This DIAPH2 antibody is generated from rabbits immunized with a KLH conjugated synthetic peptide between 870-899 amino acids from the Central region of human DIAPH2.

DilutionWB~~1:1000
IHC-P~~1:50~100
FC~~1:10~50**Format**

Purified polyclonal antibody supplied in PBS with 0.09% (W/V) sodium azide. This antibody is purified through a protein A column, followed by peptide affinity purification.

Storage

Maintain refrigerated at 2-8°C for up to 2 weeks. For long term storage store at -20°C in small aliquots to prevent freeze-thaw cycles.

Precautions

DIAPH2 Antibody (Center) is for research use only and not for use in diagnostic or therapeutic procedures.

DIAPH2 Antibody (Center) - Protein Information**Name** DIAPH2**Synonyms** DIA

Function Could be involved in oogenesis. Involved in the regulation of endosome dynamics. Implicated in a novel signal transduction pathway, in which isoform 3 and CSK are sequentially activated by RHOD to regulate the motility of early endosomes through interactions with the actin cytoskeleton.

Cellular Location

[Isoform 3]: Cytoplasm, cytosol. Early endosome. Note=Isoform 3 is cytosolic but when coexpressed with RHOD, the 2 proteins colocalize to early endosomes

Tissue Location

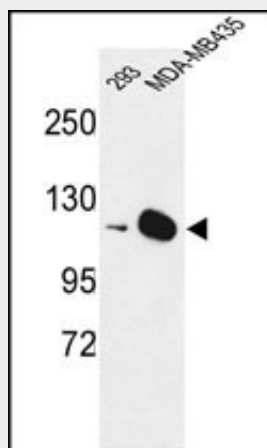
Expressed in testis, ovary, small intestine, prostate, lung, liver, kidney and leukocytes

DIAPH2 Antibody (Center) - Protocols

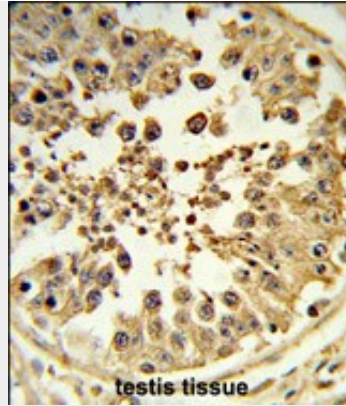
Provided below are standard protocols that you may find useful for product applications.

- [Western Blot](#)
- [Blocking Peptides](#)
- [Dot Blot](#)
- [Immunohistochemistry](#)
- [Immunofluorescence](#)
- [Immunoprecipitation](#)
- [Flow Cytometry](#)
- [Cell Culture](#)

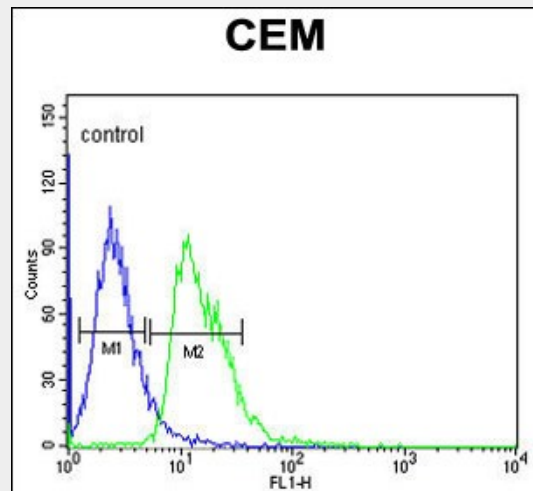
DIAPH2 Antibody (Center) - Images



Western blot analysis of DIAPH2 Antibody (Center) (Cat. #AP9407c) in 293, MDA-MB435 cell line lysates (35ug/lane). DIAPH2 (arrow) was detected using the purified Pab.



Formalin-fixed and paraffin-embedded human testis tissue reacted with DIAPH2 Antibody (Center), which was peroxidase-conjugated to the secondary antibody, followed by DAB staining. This data demonstrates the use of this antibody for immunohistochemistry; clinical relevance has not been evaluated.



DIAPH2 Antibody (Center) (Cat. #AP9407c) flow cytometric analysis of CEM cells (right histogram) compared to a negative control cell (left histogram). FITC-conjugated goat-anti-rabbit secondary antibodies were used for the analysis.

DIAPH2 Antibody (Center) - Background

DIAPH2 belongs to the diaphanous subfamily of the formin homology family of proteins. This gene may play a role in the development and normal function of the ovaries. Defects in this protein have been linked to premature ovarian failure 2.

DIAPH2 Antibody (Center) - References

Olsen, J.V., et al. Cell 127(3):635-648(2006)
 Olsen, J.V., et al. Cell 127(3):635-648(2006)
 Yasuda, S., et al. Nature 428(6984):767-771(2004)
 Gasman, S., et al. Nat. Cell Biol. 5(3):195-204(2003)
 Satoh, S., et al. J. Biol. Chem. 276(42):39290-39294(2001)