

**PI3 Kinase p110 beta Rabbit pAb**  
**PI3 Kinase p110 beta Rabbit pAb**  
**Catalog # AP94117**

## Specification

---

### PI3 Kinase p110 beta Rabbit pAb - Product Information

Application	WB, IHC-P, IHC-F, IF, E
Primary Accession	<a href="#">Q24JU2</a>
Reactivity	Human
Host	Rabbit
Clonality	Polyclonal

### PI3 Kinase p110 beta Rabbit pAb - Additional Information

#### Dilution

WB~1:1000  
IHC-P~N/A  
IHC-F~N/A  
IF~1:50~200  
E~N/A

#### Format

0.01M TBS(pH7.4), 0.09% (W/V) sodium azide and 50% Glyce

#### Storage

Store at -20 °C for one year. Avoid repeated freeze/thaw cycles. When reconstituted in sterile pH 7.4 0.01M PBS or diluent of antibody the antibody is stable for at least two weeks at 2-4 °C.

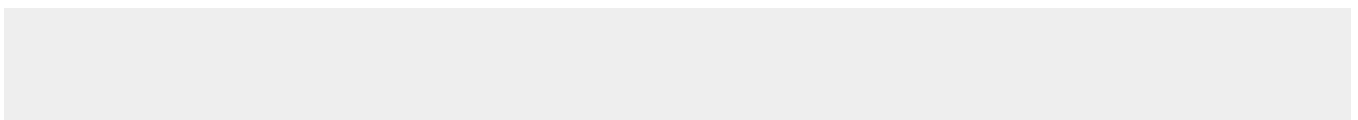
### PI3 Kinase p110 beta Rabbit pAb - Protein Information

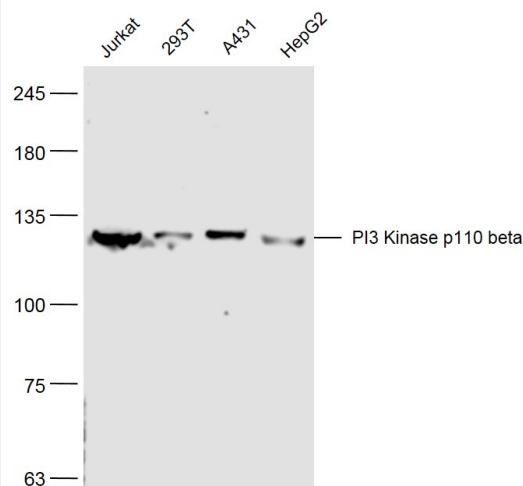
### PI3 Kinase p110 beta Rabbit pAb - Protocols

Provided below are standard protocols that you may find useful for product applications.

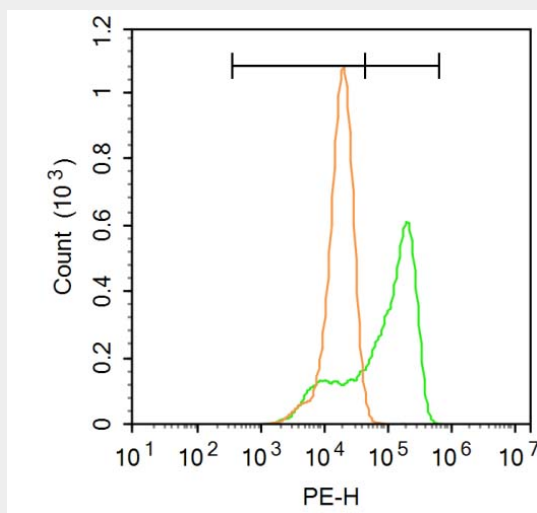
- [Western Blot](#)
- [Blocking Peptides](#)
- [Dot Blot](#)
- [Immunohistochemistry](#)
- [Immunofluorescence](#)
- [Immunoprecipitation](#)
- [Flow Cytometry](#)
- [Cell Culture](#)

### PI3 Kinase p110 beta Rabbit pAb - Images

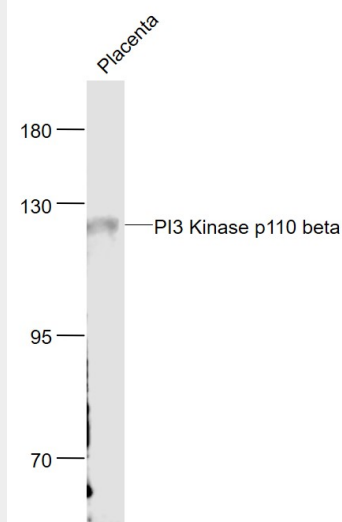




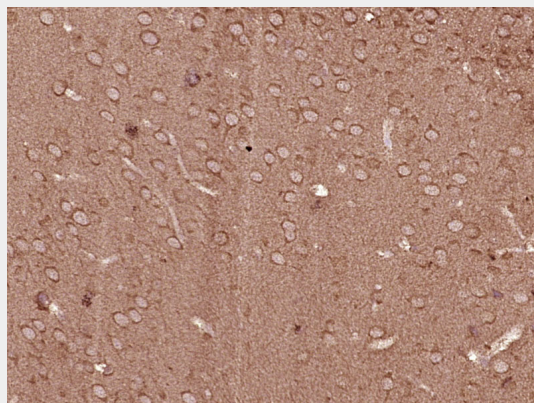
Sample: Jurkat(Human) Cell Lysate at 30 ug 293T(Human) Cell Lysate at 30 ug A431(Human) Cell Lysate at 30 ug HepG2(Human) Cell Lysate at 30 ug Primary: Anti- PI3 Kinase p110 beta (AP94117) at 1/300 dilution Secondary: IRDye800CW Goat Anti-Rabbit IgG at 1/20000 dilution Predicted band size: 123 kD Observed band size: 123 kD



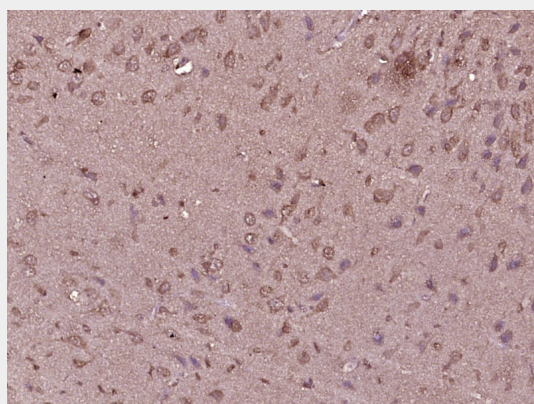
Blank control:A549. Primary Antibody (green line): Rabbit Anti-PI3 Kinase p110 beta antibody (AP94117) Dilution: 1  $\mu$ g / $10^6$  cells; Isotype Control Antibody (orange line): Rabbit IgG . Secondary Antibody : Goat anti-rabbit IgG-PE Dilution: 3  $\mu$ g /test. Protocol The cells were fixed with 4% PFA (10min at room temperature)and then permeabilized with 90% ice-cold methanol for 20 min at -20°C. The cells were then incubated in 5% BSA to block non-specific protein-protein interactions for 30 min at at room temperature .Cells stained with Primary Antibody for 30 min at room temperature. The secondary antibody used for 40 min at room temperature. Acquisition of 20,000 events was performed.



Sample: Placenta (Mouse) Lysate at 40 ug Primary: Anti- PI3 Kinase p110 beta (AP94117) at 1/1000 dilution Secondary: IRDye800CW Goat Anti-Rabbit IgG at 1/20000 dilution Predicted band size: 123 kD Observed band size: 123 kD



Paraformaldehyde-fixed, paraffin embedded (Mouse brain); Antigen retrieval by boiling in sodium citrate buffer (pH6.0) for 15min; Block endogenous peroxidase by 3% hydrogen peroxide for 20 minutes; Blocking buffer (normal goat serum) at 37°C for 30min; Antibody incubation with (PI3 Kinase p110 beta) Polyclonal Antibody, Unconjugated (AP94117) at 1:400 overnight at 4°C, followed by operating according to SP Kit(Rabbit) (sp-0023) instructions and DAB staining.



Paraformaldehyde-fixed, paraffin embedded (Rat brain); Antigen retrieval by boiling in sodium citrate buffer (pH6.0) for 15min; Block endogenous peroxidase by 3% hydrogen peroxide for 20 minutes; Blocking buffer (normal goat serum) at 37°C for 30min; Antibody incubation with (PI3

Kinase p110 beta) Polyclonal Antibody, Unconjugated (AP94117) at 1:400 overnight at 4°C, followed by operating according to SP Kit(Rabbit) (sp-0023) instructions and DAB staining.

**PI3 Kinase p110 beta Rabbit pAb - Background**

This product as supplied is intended for research use only, not for use in human, therapeutic or diagnostic applications.