

Involucrin Rabbit pAb
Involucrin Rabbit pAb
Catalog # AP94141**Specification**

Involucrin Rabbit pAb - Product Information

Application	WB
Primary Accession	P48997
Reactivity	Mouse
Host	Rabbit
Clonality	Polyclonal
Calculated MW	54919

Involucrin Rabbit pAb - Additional Information**Other Names**

Involucrin, Ivl

Dilution

WB~~1:1000

Format

0.01M TBS(pH7.4), 0.09% (W/V) sodium azide and 50% Glyce

Storage

Store at -20 °C for one year. Avoid repeated freeze/thaw cycles. When reconstituted in sterile pH 7.4 0.01M PBS or diluent of antibody the antibody is stable for at least two weeks at 2-4 °C.

Involucrin Rabbit pAb - Protein Information**Name** Ivl**Function**

Part of the insoluble cornified cell envelope (CE) of stratified squamous epithelia.

Cellular Location

Cytoplasm. Note=Constituent of the scaffolding of the cornified envelope

Tissue Location

Keratinocytes of epidermis and other stratified squamous epithelia

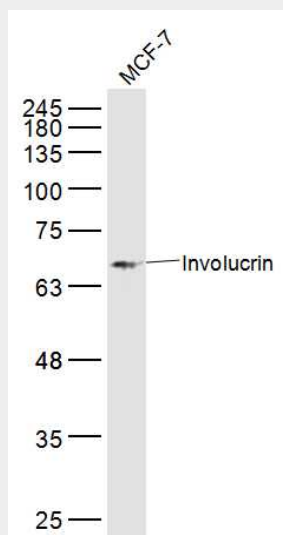
Involucrin Rabbit pAb - Protocols

Provided below are standard protocols that you may find useful for product applications.

- [Western Blot](#)

- [Blocking Peptides](#)
- [Dot Blot](#)
- [Immunohistochemistry](#)
- [Immunofluorescence](#)
- [Immunoprecipitation](#)
- [Flow Cytometry](#)
- [Cell Culture](#)

Involucrin Rabbit pAb - Images



Sample: MCM-7(Human) Cell Lysate at 30 ug Primary: Anti-Involucrin (AP94141) at 1/300 dilution
Secondary: IRDye800CW Goat Anti-Rabbit IgG at 1/20000 dilution Predicted band size: 64 kD
Observed band size: 64 kD

Involucrin Rabbit pAb - Background

This product as supplied is intended for research use only, not for use in human, therapeutic or diagnostic applications.