

PEDF Rabbit pAb
PEDF Rabbit pAb
Catalog # AP94158**Specification**

PEDF Rabbit pAb - Product Information

Application	WB, IHC-P, IHC-F, IF
Primary Accession	P97298
Reactivity	Mouse
Host	Rabbit
Clonality	Polyclonal
Calculated MW	46 KDa
Physical State	Liquid
Immunogen	KLH conjugated synthetic peptide derived from mouse PEDF
Epitope Specificity	151-250/417
Isotype	IgG
Purity	
affinity purified by Protein A	
Buffer	0.01M TBS (pH7.4) with 1% BSA, 0.02% Proclin300 and 50% Glycerol.
SUBCELLULAR LOCATION	Secreted. Melanosome. Enriched in stage I melanosomes.
SIMILARITY	Belongs to the serpin family.
Post-translational modifications	The N-terminus is blocked. Extracellular phosphorylation enhances antiangiogenic activity.
DISEASE	Defects in SERPINF1 are the cause of osteogenesis imperfecta type 12 (OI12) [MIM:613982]. OI12 is a connective tissue disorder characterized by bone fragility, low bone mass, and recurrent fractures. OI12 is characterized by features compatible with osteogenesis imperfecta type III in the Sillence classification. Patients have normal grayish sclerae and fractures of long bones and severe vertebral compression fractures, with resulting deformities observed as early as the first year of life.
Important Note	This product as supplied is intended for research use only, not for use in human, therapeutic or diagnostic applications.

Background Descriptions

Pigment epithelium derived factor, originally identified in conditioned medium of cultured human fetal retinal pigment epithelial (RPE) cells, is a neurotrophic protein that induces extensive neuronal differentiation in human Y79 retinoblastoma cells, a neoplastic counterpart of normal retinoblasts. It has been suggested that PEDF is synthesized by RPE cells and secreted into the retina interphotoreceptor matrix where it may influence development/differentiation of the neural retina. PEDF is a potent inhibitor of angiogenesis. As it does not undergo the S (stressed) to R

(relaxed) conformational transition characteristic of active serpins, it exhibits no serine protease inhibitory activity. The PEDF gene is a member of the serpin gene family. Serpins are a group of serine protease inhibitors, some of which have also been reported to exhibit neurotrophic activity.

PEDF Rabbit pAb - Additional Information

Gene ID 20317

Other Names

Pigment epithelium-derived factor, PEDF, Caspin, Serpin F1, Stromal cell-derived factor 3, SDF-3, Serpinf1, Pedf, Sdf3

Target/Specificity

Retinal pigment epithelial cells and blood plasma.

Dilution

WB~~1:1000<br \>IHC-P~~N/A<br \>IHC-F~~N/A<br \>IF~~1:50~200

Format

0.01M TBS(pH7.4), 0.09% (W/V) sodium azide and 50% Glyce

Storage

Store at -20 °C for one year. Avoid repeated freeze/thaw cycles. When reconstituted in sterile pH 7.4 0.01M PBS or diluent of antibody the antibody is stable for at least two weeks at 2-4 °C.

PEDF Rabbit pAb - Protein Information

Name Serpinf1

Synonyms Pedf, Sdf3

Function

Neurotrophic protein; induces extensive neuronal differentiation in retinoblastoma cells. Potent inhibitor of angiogenesis. As it does not undergo the S (stressed) to R (relaxed) conformational transition characteristic of active serpins, it exhibits no serine protease inhibitory activity.

Cellular Location

Secreted. Melanosome.

Tissue Location

Highly expressed in the liver, gastric glandular mucosa and renal tubules. It is also expressed in the brain, heart, lung retina and testes.

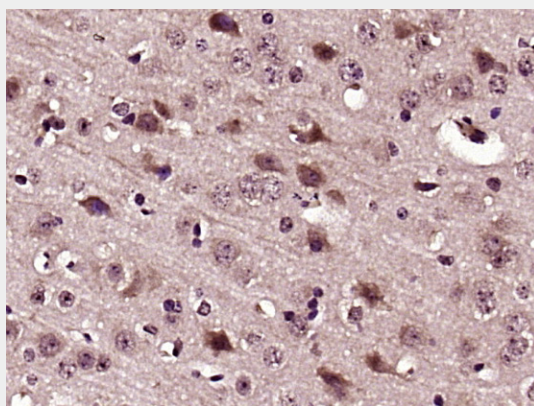
PEDF Rabbit pAb - Protocols

Provided below are standard protocols that you may find useful for product applications.

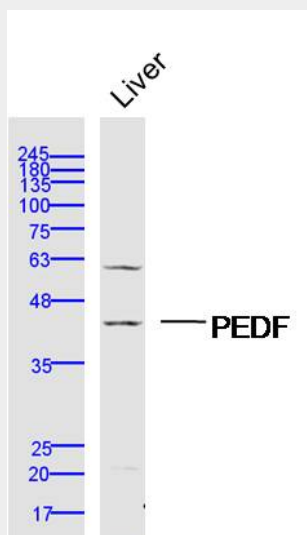
- [Western Blot](#)
- [Blocking Peptides](#)

- [Dot Blot](#)
- [Immunohistochemistry](#)
- [Immunofluorescence](#)
- [Immunoprecipitation](#)
- [Flow Cytometry](#)
- [Cell Culture](#)

PEDF Rabbit pAb - Images



Paraformaldehyde-fixed, paraffin embedded (Mouse brain); Antigen retrieval by boiling in sodium citrate buffer (pH6.0) for 15min; Block endogenous peroxidase by 3% hydrogen peroxide for 20 minutes; Blocking buffer (normal goat serum) at 37°C for 30min; Antibody incubation with (PEDF) Polyclonal Antibody, Unconjugated (AP94158) at 1:400 overnight at 4°C, followed by operating according to SP Kit(Rabbit) (sp-0023) instructions and DAB staining.



Sample: Liver (Mouse) Lysate at 40 ug Primary: Anti-PEDF (AP94158) at 1/300 dilution Secondary: IRDye800CW Goat Anti-Rabbit IgG at 1/20000 dilution Predicted band size: 46 kD Observed band size: 46 kD

PEDF Rabbit pAb - Background

This product as supplied is intended for research use only, not for use in human, therapeutic or diagnostic applications.