

Phospho-Progesterone Receptor (Ser190) Rabbit pAb
Phospho-Progesterone Receptor (Ser190) Rabbit pAb
Catalog # AP94186**Specification**

Phospho-Progesterone Receptor (Ser190) Rabbit pAb - Product Information

Application	WB
Primary Accession	Q63449
Reactivity	Rat
Host	Rabbit
Clonality	Polyclonal
Calculated MW	99408

Phospho-Progesterone Receptor (Ser190) Rabbit pAb - Additional Information**Gene ID** 25154**Other Names**

Progesterone receptor, PR, Nuclear receptor subfamily 3 group C member 3, Pgr, Nr3c3

Dilution

WB~~1:1000

Format

0.01M TBS(pH7.4), 0.09% (W/V) sodium azide and 50% Glyce

Storage

Store at -20 °C for one year. Avoid repeated freeze/thaw cycles. When reconstituted in sterile pH 7.4 0.01M PBS or diluent of antibody the antibody is stable for at least two weeks at 2-4 °C.

Phospho-Progesterone Receptor (Ser190) Rabbit pAb - Protein Information**Name** Pgr**Synonyms** Nr3c3**Function**

The steroid hormones and their receptors are involved in the regulation of eukaryotic gene expression and affect cellular proliferation and differentiation in target tissues. Depending on the isoform, progesterone receptor functions as a transcriptional activator or repressor (By similarity).

Cellular Location

Nucleus. Cytoplasm. Note=Nucleoplasmic shuttling is both hormone- and cell cycle-dependent. On hormone stimulation, retained in the cytoplasm in the G(1) and G(2)/M phases (By similarity).

Tissue Location

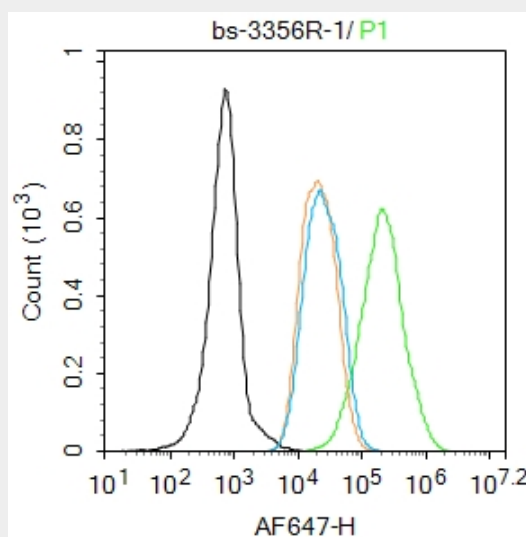
Isoform A and isoform B are expressed in the pituitary.

Phospho-Progesterone Receptor (Ser190) Rabbit pAb - Protocols

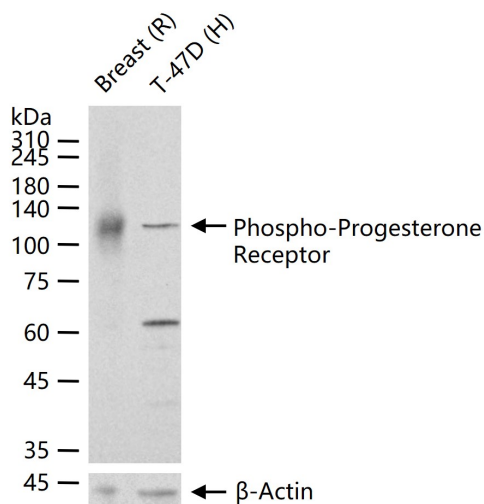
Provided below are standard protocols that you may find useful for product applications.

- [Western Blot](#)
- [Blocking Peptides](#)
- [Dot Blot](#)
- [Immunohistochemistry](#)
- [Immunofluorescence](#)
- [Immunoprecipitation](#)
- [Flow Cytometry](#)
- [Cell Culture](#)

Phospho-Progesterone Receptor (Ser190) Rabbit pAb - Images



Blank control: MCF7. Primary Antibody (green line): Rabbit Anti-Phospho-Progesterone Receptor (Ser190) antibody (AP94186) Dilution: 1 μ g /10⁶ cells; Isotype Control Antibody (orange line): Rabbit IgG . Secondary Antibody : Goat anti-rabbit IgG-AF647 Dilution: 1 μ g /test. Protocol The cells were fixed with 4% PFA (10min at room temperature)and then permeabilized with 90% ice-cold methanol for 20 min at -20°C. The cells were then incubated in 5%BSA to block non-specific protein-protein interactions for 30 min at room temperature .Cells stained with Primary Antibody for 30 min at room temperature. The secondary antibody used for 40 min at room temperature. Acquisition of 20,000 events was performed.



25 ug total protein per lane of various lysates (see on figure) probed with Phospho-Progesterone Receptor (Ser190) polyclonal antibody, unconjugated (AP94186) at 1:1000 dilution and 4°C overnight incubation. Followed by conjugated secondary antibody incubation at r.t. for 60 min.

Phospho-Progesterone Receptor (Ser190) Rabbit pAb - Background

This product as supplied is intended for research use only, not for use in human, therapeutic or diagnostic applications.