

**CD14 Rabbit pAb**  
**CD14 Rabbit pAb**  
**Catalog # AP94199****Specification**

---

**CD14 Rabbit pAb - Product Information**

Application	<b>WB</b>
Reactivity	<b>Mouse</b>
Host	<b>Rabbit</b>
Clonality	<b>Polyclonal</b>

**CD14 Rabbit pAb - Additional Information****Dilution**

WB~~1:1000

**Format**

0.01M TBS(pH7.4), 0.09% (W/V) sodium azide and 50% Glyce

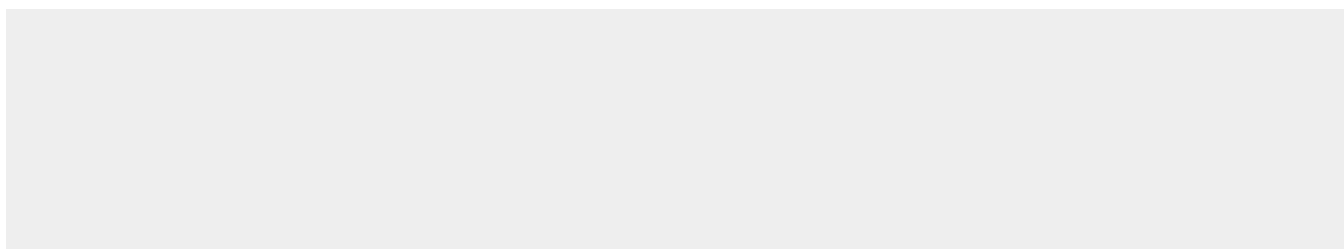
**Storage**

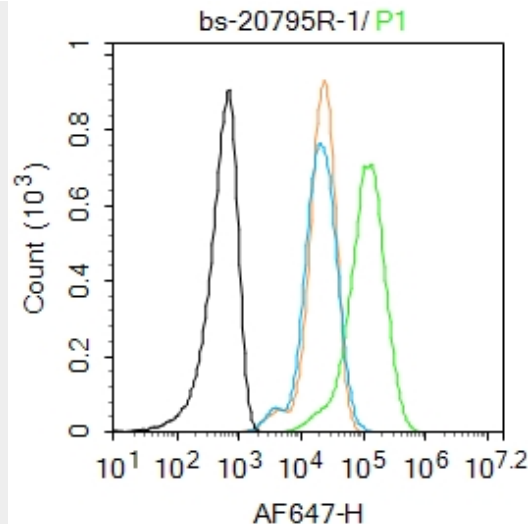
Store at -20 °C for one year. Avoid repeated freeze/thaw cycles. When reconstituted in sterile pH 7.4 0.01M PBS or diluent of antibody the antibody is stable for at least two weeks at 2-4 °C.

**CD14 Rabbit pAb - Protein Information****CD14 Rabbit pAb - Protocols**

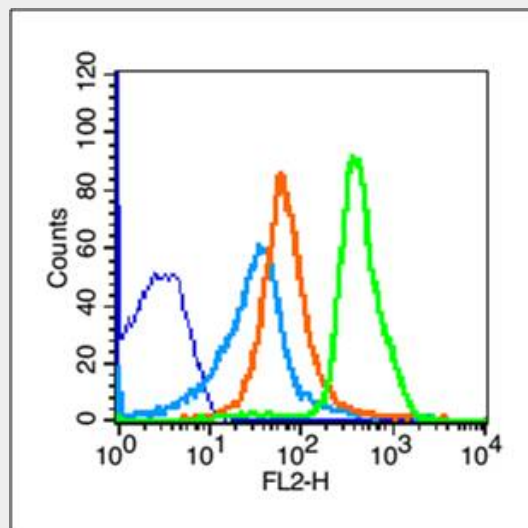
Provided below are standard protocols that you may find useful for product applications.

- [Western Blot](#)
- [Blocking Peptides](#)
- [Dot Blot](#)
- [Immunohistochemistry](#)
- [Immunofluorescence](#)
- [Immunoprecipitation](#)
- [Flow Cytometry](#)
- [Cell Culture](#)

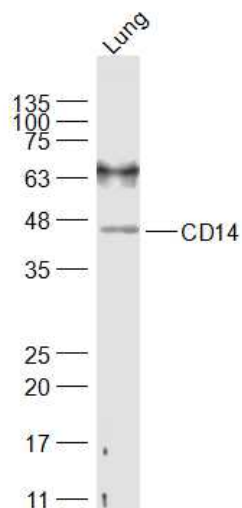
**CD14 Rabbit pAb - Images**



Blank control: Raw264.7. Primary Antibody (green line): Rabbit Anti-CD14 antibody (AP94199) Dilution: 1  $\mu\text{g}$  /  $10^6$  cells; Isotype Control Antibody (orange line): Rabbit IgG . Secondary Antibody : Goat anti-rabbit IgG-AF647 Dilution: 1  $\mu\text{g}$  /test. Protocol The cells were fixed with 4% PFA (10min at room temperature) and then permeabilized with 0.1% PBST for 20 min at room temperature. The cells were then incubated in 5% BSA to block non-specific protein-protein interactions for 30 min at room temperature .Cells stained with Primary Antibody for 30 min at room temperature. The secondary antibody used for 40 min at room temperature. Acquisition of 20,000 events was performed.



Blank control (blue line): Mouse thymus cells (fixed with 70% methanol (Overnight at 4°C)). Primary Antibody (green line): Rabbit Anti-CD14 antibody (AP94199), Dilution: 3  $\mu\text{g}$  /  $10^6$  cells; Isotype Control Antibody (orange line): Rabbit IgG . Secondary Antibody (white blue line): Goat anti-rabbit IgG-PE, Dilution: 1  $\mu\text{g}$  /test.



Sample: Lung (Mouse) Lysate at 40 ug Primary: Anti-CD14 (AP94199) at 1/300 dilution  
Secondary: IRDye800CW Goat Anti-Rabbit IgG at 1/20000 dilution Predicted band size: 35/40 kD  
Observed band size: 42 kD

#### **CD14 Rabbit pAb - Background**

This product as supplied is intended for research use only, not for use in human, therapeutic or diagnostic applications.