

**phospho-REC8 (Ser251) Rabbit pAb**  
**phospho-REC8 (Ser251) Rabbit pAb**  
**Catalog # AP94238**

## Specification

---

### phospho-REC8 (Ser251) Rabbit pAb - Product Information

Application	WB
Primary Accession	<a href="#">Q8C5S7</a>
Reactivity	Mouse
Host	Rabbit
Clonality	Polyclonal
Calculated MW	67425

### phospho-REC8 (Ser251) Rabbit pAb - Additional Information

**Gene ID** 56739

#### Other Names

Meiotic recombination protein REC8 homolog, Cohesin Rec8p, Rec8, Mei8, Rec8L1

#### Dilution

WB~~1:1000

#### Format

0.01M TBS(pH7.4), 0.09% (W/V) sodium azide and 50% Glyce

#### Storage

Store at -20 °C for one year. Avoid repeated freeze/thaw cycles. When reconstituted in sterile pH 7.4 0.01M PBS or diluent of antibody the antibody is stable for at least two weeks at 2-4 °C.

### phospho-REC8 (Ser251) Rabbit pAb - Protein Information

**Name** Rec8

**Synonyms** Mei8, Rec8L1

#### Function

Required during meiosis for separation of sister chromatids and homologous chromosomes. Proteolytic cleavage of REC8 on chromosome arms by separin during anaphase I allows for homologous chromosome separation in meiosis I and cleavage of REC8 on centromeres during anaphase II allows for sister chromatid separation in meiosis II.

#### Cellular Location

Nucleus. Chromosome. Chromosome, centromere. Note=In meiotic chromosomes, localized along axial elements in prophase from the leptotene to diplotene stages. At later prophase stages, diakinesis and metaphase I, localized along interstitial axes of chromosomes including both centromere and arm regions. No longer detected in arm regions in anaphase I but persists on centromere regions until metaphase II.

### Tissue Location

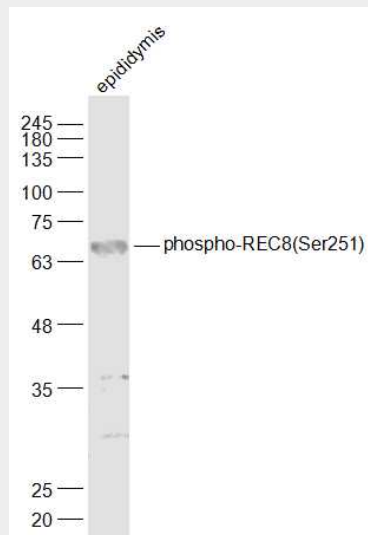
Expressed primarily in the gonads. In the testis, expressed in pachytene spermatocytes and in spermatids. Not expressed in spermatogonia or somatic cells. In the ovary, expressed only in oocytes. Low levels also detected in a number of somatic tissues including thymus, lung, liver, kidney and small intestine

### phospho-REC8 (Ser251) Rabbit pAb - Protocols

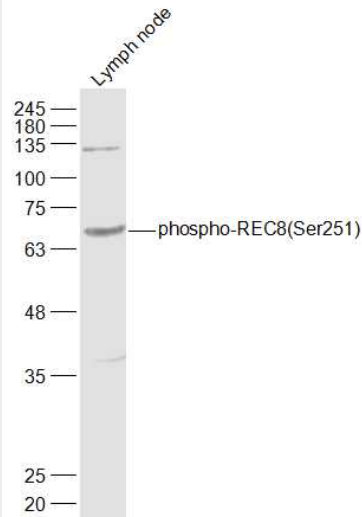
Provided below are standard protocols that you may find useful for product applications.

- [Western Blot](#)
- [Blocking Peptides](#)
- [Dot Blot](#)
- [Immunohistochemistry](#)
- [Immunofluorescence](#)
- [Immunoprecipitation](#)
- [Flow Cytometry](#)
- [Cell Culture](#)

### phospho-REC8 (Ser251) Rabbit pAb - Images



Sample: Epididymis (Mouse) Lysate at 40 ug Primary: Anti-phospho-REC8(Ser251) (AP94238) at 1/1000 dilution Secondary: IRDye800CW Goat Anti-Rabbit IgG at 1/20000 dilution Predicted band size: 67 kD Observed band size: 67 kD



Sample: Lymph node (Mouse) Lysate at 40 ug Primary: Anti-phospho-REC8(Ser251) (AP94238) at 1/1000 dilution Secondary: IRDye800CW Goat Anti-Rabbit IgG at 1/20000 dilution Predicted band size: 67 kD Observed band size: 67 kD

#### **phospho-REC8 (Ser251) Rabbit pAb - Background**

This product as supplied is intended for research use only, not for use in human, therapeutic or diagnostic applications.