

**Mono-Methyl-Histone H3 (Lys36) Recombinant Rabbit mAb**  
**Mono-Methyl-Histone H3 (Lys36) Recombinant Rabbit mAb**  
**Catalog # AP94263**

**Specification**

---

**Mono-Methyl-Histone H3 (Lys36) Recombinant Rabbit mAb - Product Information**

Application	<b>IHC-P, WB</b>
Host	<b>Rabbit</b>
Clonality	<b>Recombinant</b>

**Mono-Methyl-Histone H3 (Lys36) Recombinant Rabbit mAb - Additional Information**

**Format**

0.01M TBS(pH7.4), 0.09% (W/V) sodium azide and 50% Glycerol

**Storage**

Store at -20 °C for one year. Avoid repeated freeze/thaw cycles. When reconstituted in sterile pH 7.4 0.01M PBS or diluent of antibody the antibody is stable for at least two weeks at 2-4 °C.

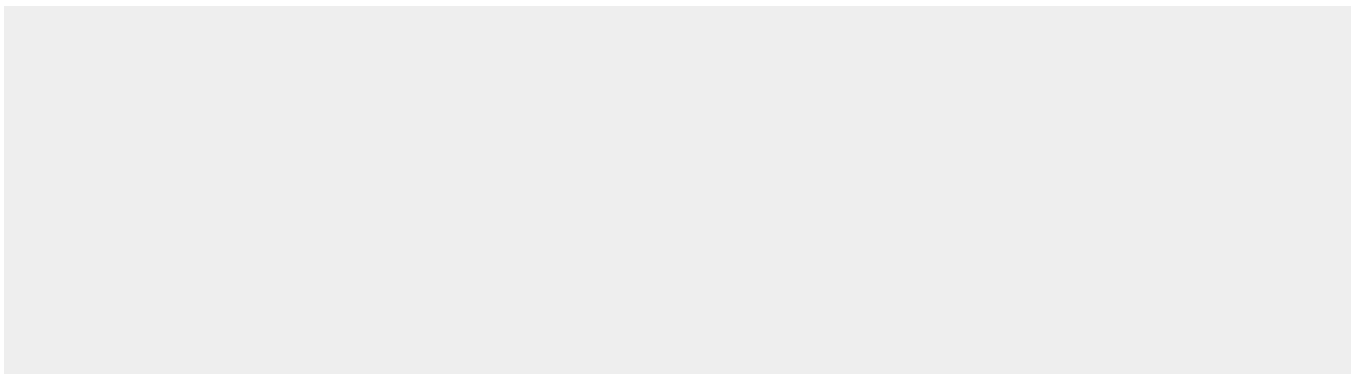
**Mono-Methyl-Histone H3 (Lys36) Recombinant Rabbit mAb - Protein Information**

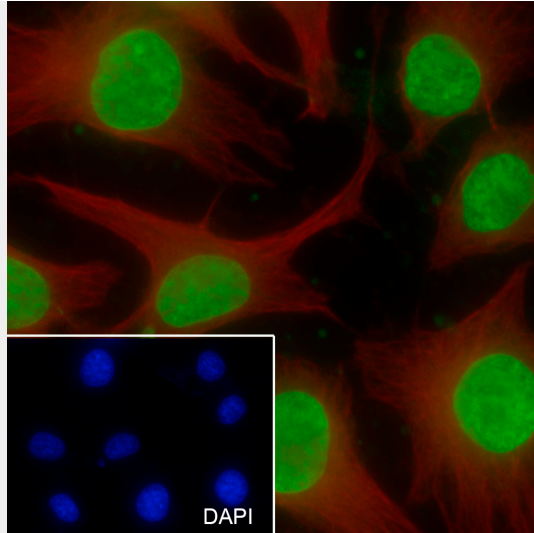
**Mono-Methyl-Histone H3 (Lys36) Recombinant Rabbit mAb - Protocols**

Provided below are standard protocols that you may find useful for product applications.

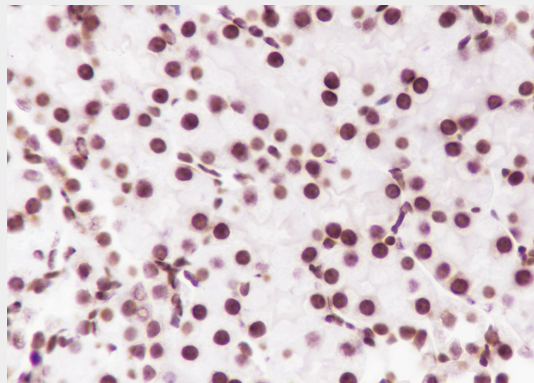
- [Western Blot](#)
- [Blocking Peptides](#)
- [Dot Blot](#)
- [Immunohistochemistry](#)
- [Immunofluorescence](#)
- [Immunoprecipitation](#)
- [Flow Cytometry](#)
- [Cell Culture](#)

**Mono-Methyl-Histone H3 (Lys36) Recombinant Rabbit mAb - Images**

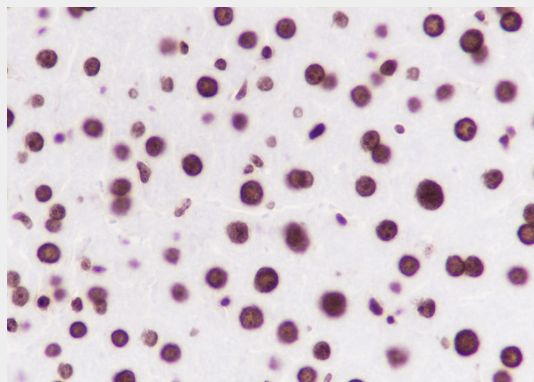




Cell line: HeLa Fixative: 100% Ice-cold methanol Permeabilization: 0.1% TritonX-100 Primary ab dilution: 1:50 Primary incubation condition: 4°C overnight Secondary ab: Goat Anti-Rabbit IgG Nuclear counter stain: DAPI (Blue) Counter stain: Tubulin (Red) Comment: Color green is the positive signal for AP94263

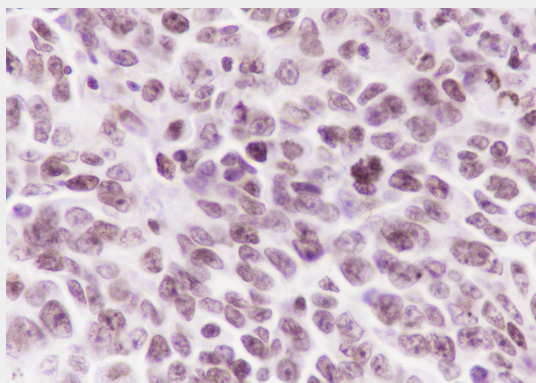


Tissue: Rat kidney Section type: Formalin fixed & Paraffin -embedded section Retrieval method: High temperature and high pressure Retrieval buffer: Tris/EDTA buffer, pH 9.0 Primary ab dilution: 1:500 Primary ab incubation condition: 1 hour at room temperature Secondary ab: SP Kit(Rabbit) (sp-0023) Counter stain: Hematoxylin (Blue) Comment: Color brown is the positive signal for AP94263

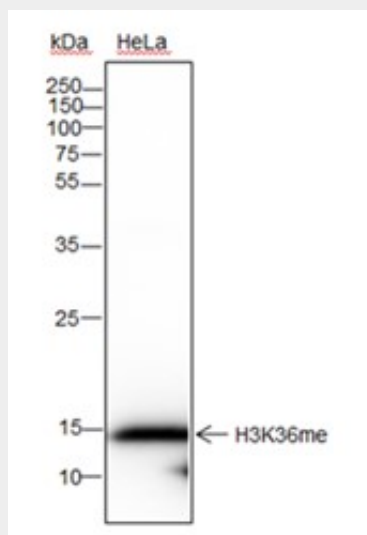


Tissue: Mouse liver Section type: Formalin fixed & Paraffin -embedded section Retrieval method: High temperature and high pressure Retrieval buffer: Tris/EDTA buffer, pH 9.0 Primary ab dilution: 1:500 Primary ab incubation condition: 1 hour at room temperature Secondary ab: SP Kit(Rabbit) (sp-0023) Counter stain: Hematoxylin (Blue) Comment: Color brown is the positive signal for AP94263

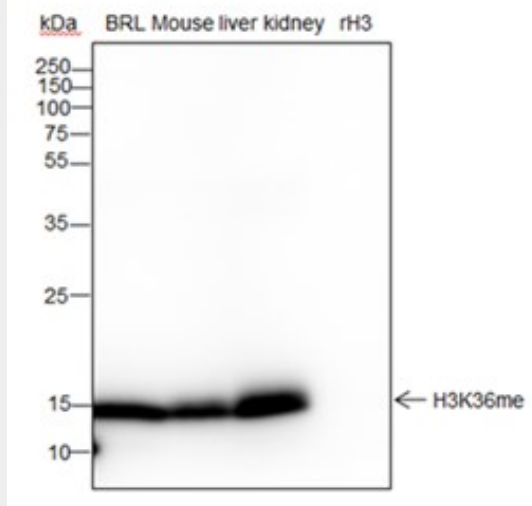
AP94263



Tissue: Human lung adenocarcinoma Section type: Formalin fixed & Paraffin -embedded section  
Retrieval method: High temperature and high pressure Retrieval buffer: Tris/EDTA buffer, pH 9.0  
Primary ab dilution: 1:500 Primary ab incubation condition: 1 hour at room temperature  
Secondary ab: SP Kit(Rabbit) (sp-0023) Counter stain: Hematoxylin (Blue) Comment: Color brown  
is the positive signal for AP94263



Blocking buffer: 5% NFDm/TBST Primary ab dilution: 1:2000 Primary ab incubation condition: 2  
hours at room temperature Secondary ab: Goat Anti-Rabbit IgG H&L (HRP) Lysate: HeLa Protein  
loading quantity: 20 µg Exposure time: 1 s Predicted MW: 17 kDa Observed MW: 17 kDa



Blocking buffer: 5% NFDM/TBST Primary ab dilution: 1:2000 Primary ab incubation condition: 2 hours at room temperature Secondary ab: Goat Anti-Rabbit IgG H&L (HRP) Lysate: BRL, Mouse liver, Mouse kidney, rH3 Protein loading quantity: 20  $\mu$ g Exposure time: 1 s Predicted MW: 17 kDa Observed MW: 17 kDa

#### **Mono-Methyl-Histone H3 (Lys36) Recombinant Rabbit mAb - Background**

This product as supplied is intended for research use only, not for use in human, therapeutic or diagnostic applications.