

Di-Methyl-Histone H3 (Lys56) Recombinant Rabbit mAb
Di-Methyl-Histone H3 (Lys56) Recombinant Rabbit mAb
Catalog # AP94265**Specification**

Di-Methyl-Histone H3 (Lys56) Recombinant Rabbit mAb - Product Information

Application	IHC-P, WB
Host	Rabbit
Clonality	Recombinant

Di-Methyl-Histone H3 (Lys56) Recombinant Rabbit mAb - Additional Information**Format**

0.01M TBS(pH7.4), 0.09% (W/V) sodium azide and 50% Glyce

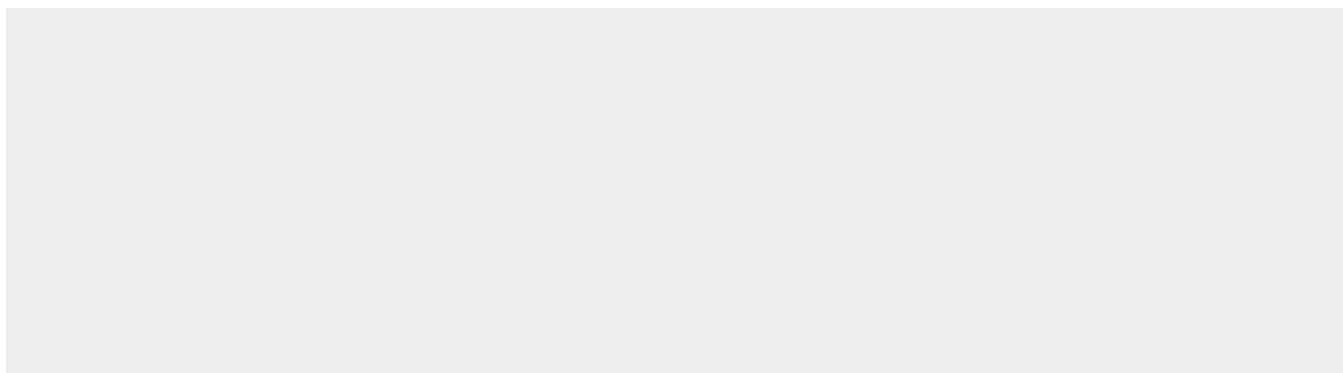
Storage

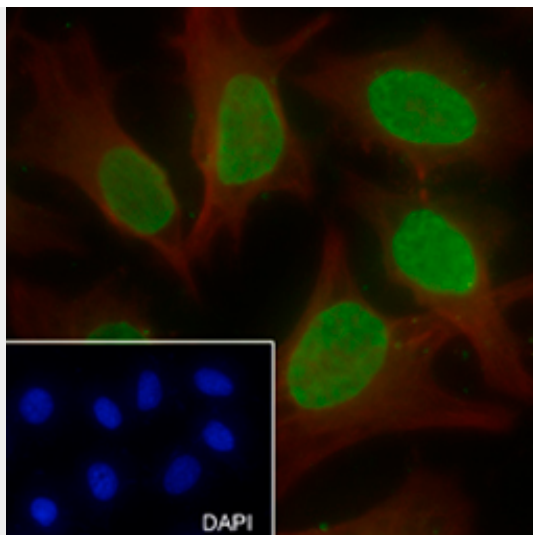
Store at -20 °C for one year. Avoid repeated freeze/thaw cycles. When reconstituted in sterile pH 7.4 0.01M PBS or diluent of antibody the antibody is stable for at least two weeks at 2-4 °C.

Di-Methyl-Histone H3 (Lys56) Recombinant Rabbit mAb - Protein Information**Di-Methyl-Histone H3 (Lys56) Recombinant Rabbit mAb - Protocols**

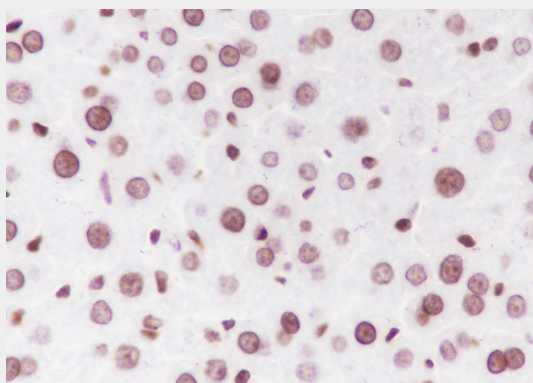
Provided below are standard protocols that you may find useful for product applications.

- [Western Blot](#)
- [Blocking Peptides](#)
- [Dot Blot](#)
- [Immunohistochemistry](#)
- [Immunofluorescence](#)
- [Immunoprecipitation](#)
- [Flow Cytometry](#)
- [Cell Culture](#)

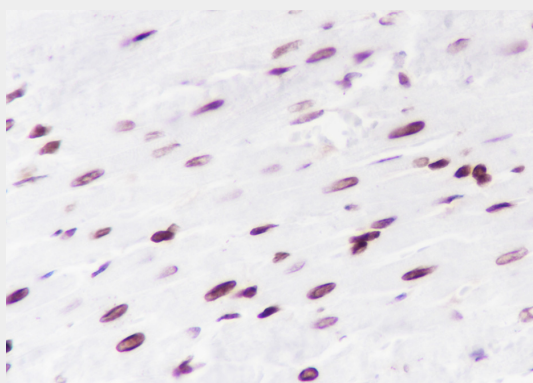
Di-Methyl-Histone H3 (Lys56) Recombinant Rabbit mAb - Images



Cell line: HeLa Fixative: 4% Paraformaldehyde Permeabilization: 0.1% TritonX-100 Primary ab dilution: 1:50 Primary incubation condition: 4°C overnight Secondary ab: Goat Anti-Rabbit IgG Nuclear counter stain: DAPI (Blue) Counter stain: Tubulin (Red) Comment: Color green is the positive signal for AP94265

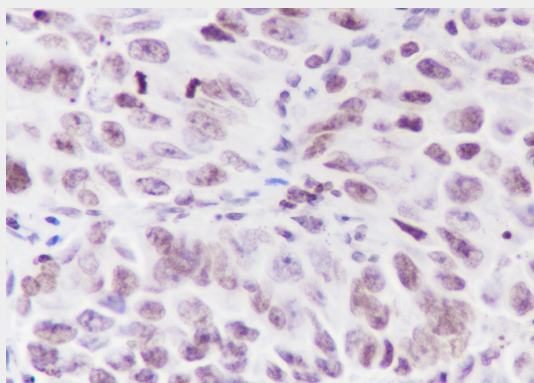


Tissue: Mouse liver Section type: Formalin fixed & Paraffin -embedded section Retrieval method: High temperature and high pressure Retrieval buffer: Tris/EDTA buffer, pH 9.0 Primary ab dilution: 1:500 Primary ab incubation condition: 1 hour at room temperature Secondary ab: SP Kit(Rabbit) (sp-0023) Counter stain: Hematoxylin (Blue) Comment: Color brown is the positive signal for AP94265

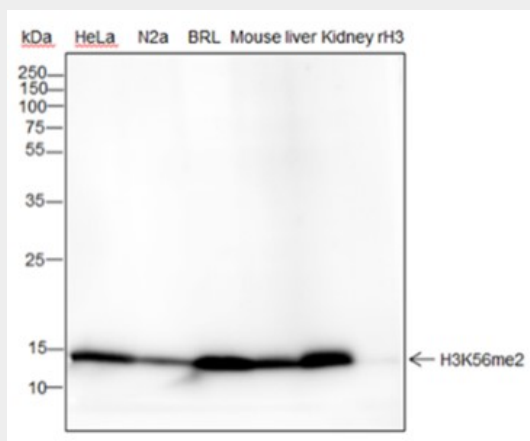


Tissue: Rat heart Section type: Formalin fixed & Paraffin -embedded section Retrieval method: High temperature and high pressure Retrieval buffer: Tris/EDTA buffer, pH 9.0 Primary ab dilution: 1:500 Primary ab incubation condition: 1 hour at room temperature Secondary ab: SP Kit(Rabbit) (sp-0023) Counter stain: Hematoxylin (Blue) Comment: Color brown is the positive signal for AP94265

AP94265



Tissue: Human lung adenocarcinoma Section type: Formalin fixed & Paraffin -embedded section
Retrieval method: High temperature and high pressure Retrieval buffer: Tris/EDTA buffer, pH 9.0
Primary ab dilution: 1:500 Primary ab incubation condition: 1 hour at room temperature
Secondary ab: SP Kit(Rabbit) (sp-0023) Counter stain: Hematoxylin (Blue) Comment: Color brown is the positive signal for AP94265



Blocking buffer: 5% NFDm/TBST Primary ab dilution: 1:2000 Primary ab incubation condition: 2 hours at room temperature Secondary ab: Goat Anti-Rabbit IgG H&L (HRP) Lysate: HeLa, N2a, BRL, Mouse liver, Mouse kidney, rH3 Protein loading quantity: 20 µg Exposure time: 60 s Predicted MW: 17 kDa Observed MW: 17 kDa

Di-Methyl-Histone H3 (Lys56) Recombinant Rabbit mAb - Background

This product as supplied is intended for research use only, not for use in human, therapeutic or diagnostic applications.