

**Zinc finger protein 754 Rabbit pAb**  
**Zinc finger protein 754 Rabbit pAb**  
**Catalog # AP94273****Specification****Zinc finger protein 754 Rabbit pAb - Product Information**

Application	<b>WB</b>
Reactivity	<b>Human</b>
Host	<b>Rabbit</b>
Clonality	<b>Polyclonal</b>
Calculated MW	<b>35 KDa</b>
Physical State	<b>Liquid</b>
Immunogen	<b>KLH conjugated synthetic peptide derived from human Rex1/Zinc finger protein 754</b>
Epitope Specificity	<b>191-290/310</b>
Isotype	<b>IgG</b>
<b>Purity</b>	
affinity purified by Protein A	
Buffer	<b>0.01M TBS (pH7.4) with 1% BSA, 0.02% Proclin300 and 50% Glycerol.</b>
SUBCELLULAR LOCATION	<b>Nucleus.</b>
SIMILARITY	<b>Belongs to the krueppel C2H2-type zinc-finger protein family. Contains 4 C2H2-type zinc fingers.</b>
Post-translational modifications	<b>Polyubiquitinated by RNF12, leading to proteasomal degradation</b>
Important Note	<b>This product as supplied is intended for research use only, not for use in human, therapeutic or diagnostic applications.</b>

**Background Descriptions**

Involved in self-renewal property of ES cells (By similarity). May be involved in transcriptional regulation. Tissue specificity ☐ Expressed in kidney, epidermal keratinocytes, prostate epithelial cells, bronchial and small airway lung epithelial cells (at protein level). Expressed in malignant kidney and several carcinoma cell lines (at protein level). Expressed in embryonic stem cells, kidney, epidermal keratinocytes, prostate epithelial cells, bronchial and small airway lung epithelial cells. Expressed in embryonal carcinomas, seminomas, malignant kidney and several carcinoma cell lines.

**Zinc finger protein 754 Rabbit pAb - Additional Information****Target/Specificity**

Expressed in kidney, epidermal keratinocytes, prostate epithelial cells, bronchial and small airway lung epithelial cells (at protein level). Expressed in malignant kidney and several carcinoma cell lines (at protein level). Expressed in embryonic stem cells, kidney, epidermal keratinocytes, prostate epithelial cells, bronchial and small airway lung epithelial cells. Expressed in embryonal carcinomas, seminomas, malignant kidney and several carcinoma cell lines.

**Dilution**

<span class = "dilution\_WB">WB~~1:1000</span>

### Storage

Store at -20 °C for one year. Avoid repeated freeze/thaw cycles. When reconstituted in sterile pH 7.4 0.01M PBS or diluent of antibody the antibody is stable for at least two weeks at 2-4 °C.

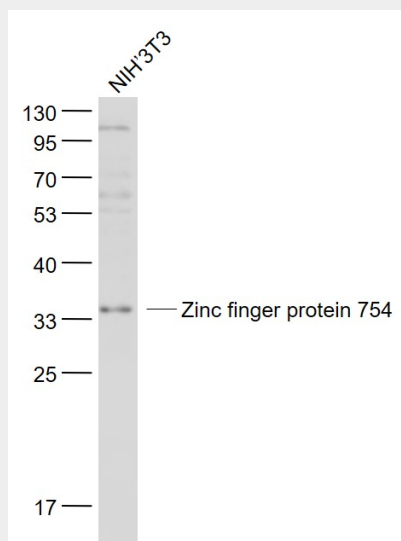
## Zinc finger protein 754 Rabbit pAb - Protein Information

### Zinc finger protein 754 Rabbit pAb - Protocols

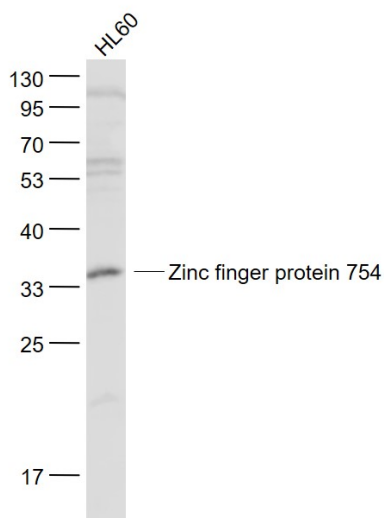
Provided below are standard protocols that you may find useful for product applications.

- [Western Blot](#)
- [Blocking Peptides](#)
- [Dot Blot](#)
- [Immunohistochemistry](#)
- [Immunofluorescence](#)
- [Immunoprecipitation](#)
- [Flow Cytometry](#)
- [Cell Culture](#)

### Zinc finger protein 754 Rabbit pAb - Images



Sample: NIH/3T3(Mouse) Cell Lysate at 30 ug Primary: Anti- Zinc finger protein 754 (AP94273) at 1/1000 dilution Secondary: IRDye800CW Goat Anti-Rabbit IgG at 1/20000 dilution Predicted band size: 35 kD Observed band size: 35 kD



Sample: HL60(Human) Cell Lysate at 30 ug Primary: Anti- Zinc finger protein 754 (AP94273) at 1/1000 dilution Secondary: IRDye800CW Goat Anti-Rabbit IgG at 1/20000 dilution Predicted band size: 35 kD Observed band size: 35 kD

#### **Zinc finger protein 754 Rabbit pAb - Background**

This product as supplied is intended for research use only, not for use in human, therapeutic or diagnostic applications.