

**Mono-Methyl-Histone H4 (Lys12) Recombinant Rabbit mAb**  
**Mono-Methyl-Histone H4 (Lys12) Recombinant Rabbit mAb**  
**Catalog # AP94275****Specification**

---

**Mono-Methyl-Histone H4 (Lys12) Recombinant Rabbit mAb - Product Information**

Application	IHC-P, WB
Host	Rabbit
Clonality	Recombinant

**Mono-Methyl-Histone H4 (Lys12) Recombinant Rabbit mAb - Additional Information****Format**

0.01M TBS(pH7.4), 0.09% (W/V) sodium azide and 50% Glyce

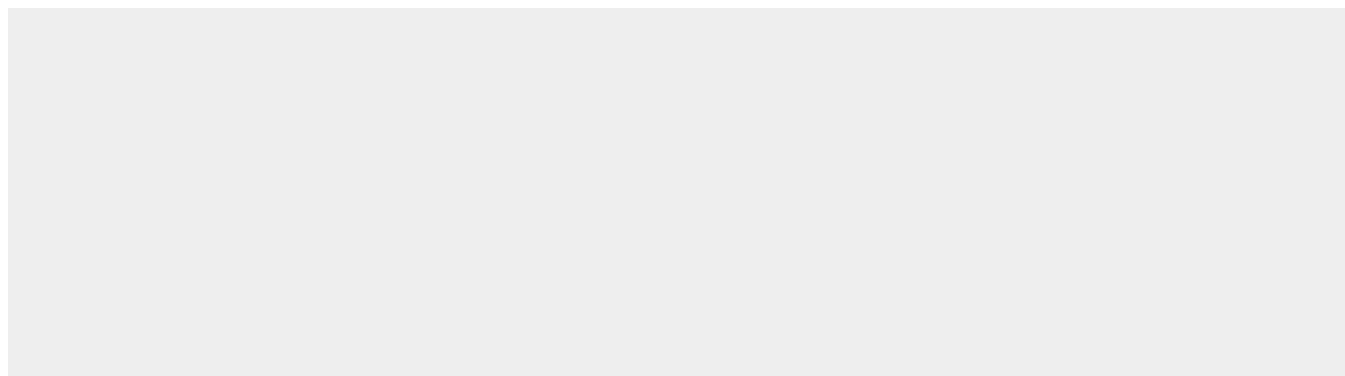
**Storage**

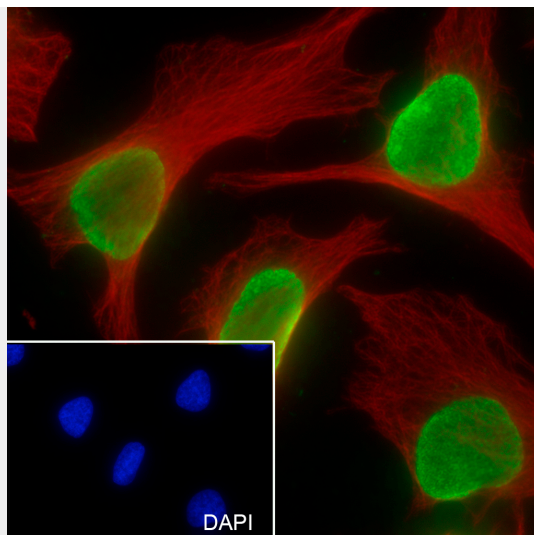
Store at -20 °C for one year. Avoid repeated freeze/thaw cycles. When reconstituted in sterile pH 7.4 0.01M PBS or diluent of antibody the antibody is stable for at least two weeks at 2-4 °C.

**Mono-Methyl-Histone H4 (Lys12) Recombinant Rabbit mAb - Protein Information****Mono-Methyl-Histone H4 (Lys12) Recombinant Rabbit mAb - Protocols**

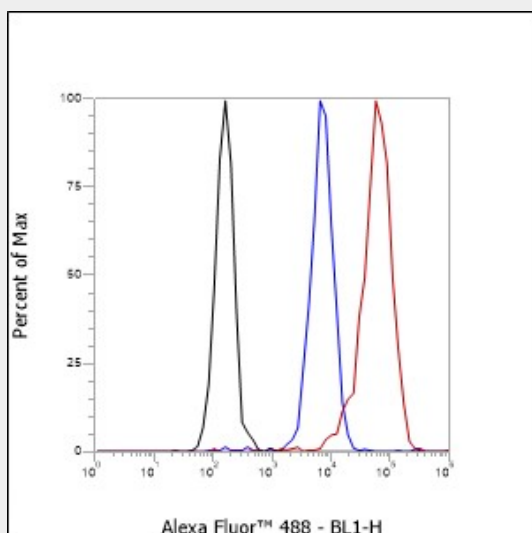
Provided below are standard protocols that you may find useful for product applications.

- [Western Blot](#)
- [Blocking Peptides](#)
- [Dot Blot](#)
- [Immunohistochemistry](#)
- [Immunofluorescence](#)
- [Immunoprecipitation](#)
- [Flow Cytometry](#)
- [Cell Culture](#)

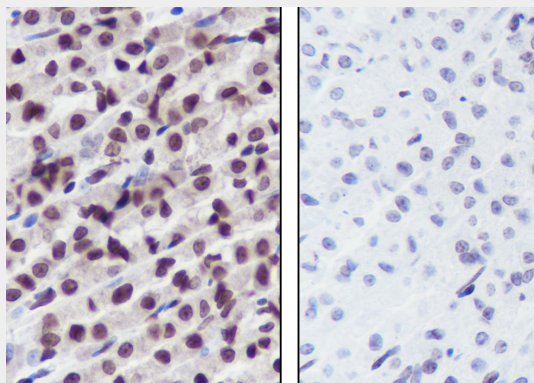
**Mono-Methyl-Histone H4 (Lys12) Recombinant Rabbit mAb - Images**



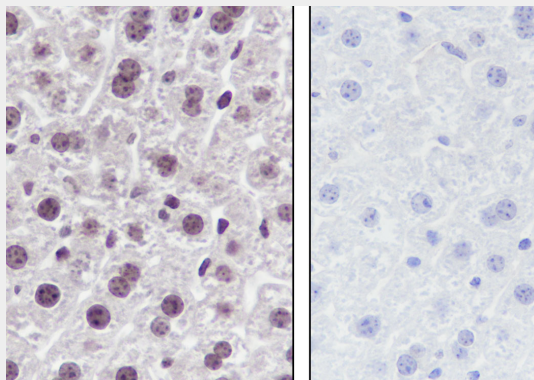
Cell line: HeLa Fixative: 100% Ice-cold methanol Permeabilization: 0.1% TritonX-100 Primary ab dilution: 1:50 Primary incubation condition: 4°C overnight Secondary ab: Goat Anti-Rabbit IgG Nuclear counter stain: DAPI (Blue) Counter stain: Tubulin (Red) Comment: Color green is the positive signal for AP94275



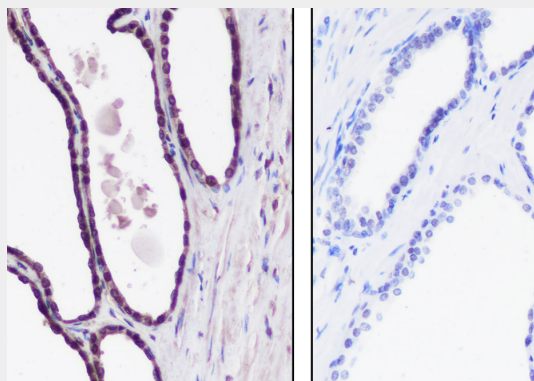
Cell line: HeLa Fixative: 4% Paraformaldehyde Permeabilization: 0.1% TritonX-100 Primary ab dilution: 1:50 Secondary ab: Goat anti Rabbit IgG Unlabelled control: The cell without incubation with primary antibody and secondary antibody (Black line). Isotype control: Rabbit monoclonal IgG (Blue line). Comment: Line red is the positive signal for AP94275



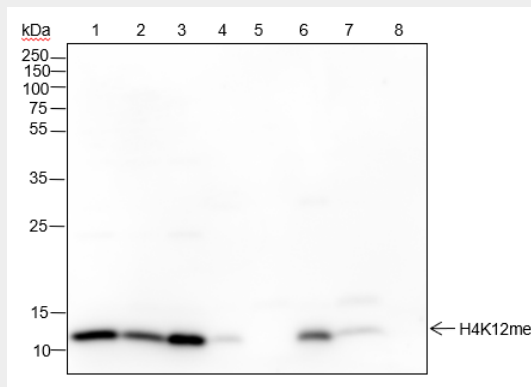
Tissue: Rat stomach Section type: Formalin fixed & Paraffin -embedded section Retrieval method: High temperature and high pressure Retrieval buffer: Tris/EDTA buffer, pH 9.0 Primary ab dilution: 1:500 Primary ab incubation condition: 1 hour at room temperature Secondary ab: SP Kit(Rabbit) (sp-0023) Counter stain: Hematoxylin (Blue) Comment: Color brown is the positive signal for AP94275



Tissue: Mouse liver Section type: Formalin fixed & Paraffin -embedded section Retrieval method: High temperature and high pressure Retrieval buffer: Tris/EDTA buffer, pH 9.0 Primary ab dilution: 1:500 Primary ab incubation condition: 1 hour at room temperature Secondary ab: SP Kit(Rabbit) (sp-0023) Counter stain: Hematoxylin (Blue) Comment: Color brown is the positive signal for AP94275



Tissue: Human prostate hyperplasia Section type: Formalin fixed & Paraffin -embedded section Retrieval method: High temperature and high pressure Retrieval buffer: Tris/EDTA buffer, pH 9.0 Primary ab dilution: 1:500 Primary ab incubation condition: 1 hour at room temperature Secondary ab: SP Kit(Rabbit) (sp-0023) Counter stain: Hematoxylin (Blue) Comment: Color brown is the positive signal for AP94275



Blocking buffer: 5% NFDM/TBST Primary ab dilution: 1:2000 Primary ab incubation condition: 2

hours at room temperature Secondary ab: Goat Anti-Rabbit IgG H&L (HRP) Lysate: 1. HeLa, 2. NIH-3T3, 3. BRL, 4. Mouse heart, 5. Rat heart, 6. Mouse kidney, 7. Rat kidney, 8. Recombinant Histone H4 Protein loading quantity: 20 µg Exposure time: 30 s Predicted MW: 11 kDa Observed MW: 11 kDa

**Mono-Methyl-Histone H4 (Lys12) Recombinant Rabbit mAb - Background**

This product as supplied is intended for research use only, not for use in human, therapeutic or diagnostic applications.