

**ASH1L Rabbit pAb**  
**ASH1L Rabbit pAb**  
**Catalog # AP94295****Specification**

---

**ASH1L Rabbit pAb - Product Information**

Application	IHC-P
Primary Accession	<a href="#">Q9NR48</a>
Reactivity	Human
Host	Rabbit
Clonality	Polyclonal
Calculated MW	332790

**ASH1L Rabbit pAb - Additional Information****Gene ID** 55870**Other Names**

Histone-lysine N-methyltransferase ASH1L, 2.1.1.359, 2.1.1.367, ASH1-like protein, huASH1, Absent small and homeotic disks protein 1 homolog, Lysine N-methyltransferase 2H, ASH1L, KIAA1420, KMT2H

**Format**

0.01M TBS(pH7.4), 0.09% (W/V) sodium azide and 50% Glyce

**Storage**

Store at -20 °C for one year. Avoid repeated freeze/thaw cycles. When reconstituted in sterile pH 7.4 0.01M PBS or diluent of antibody the antibody is stable for at least two weeks at 2-4 °C.

**ASH1L Rabbit pAb - Protein Information****Name** ASH1L**Synonyms** KIAA1420, KMT2H**Function**

Histone methyltransferase specifically trimethylating 'Lys- 36' of histone H3 forming H3K36me3 (PubMed:<a href="http://www.uniprot.org/citations/21239497" target="\_blank">21239497</a>). Also monomethylates 'Lys-9' of histone H3 (H3K9me1) in vitro (By similarity). The physiological significance of the H3K9me1 activity is unclear (By similarity).

**Cellular Location**

Nucleus. Cell junction, tight junction. Chromosome. Note=The relevance of tight junction localization is however unclear.

**Tissue Location**

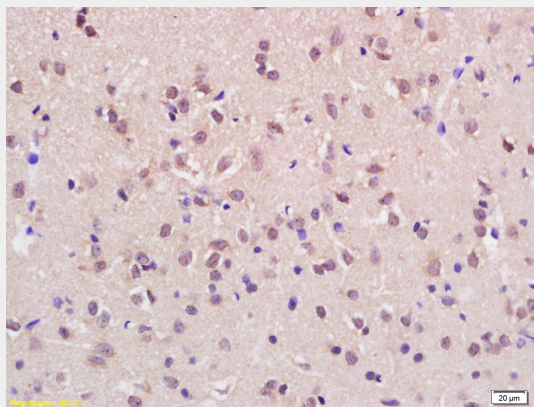
Widely expressed, with highest level in brain, heart and kidney.

## ASH1L Rabbit pAb - Protocols

Provided below are standard protocols that you may find useful for product applications.

- [Western Blot](#)
- [Blocking Peptides](#)
- [Dot Blot](#)
- [Immunohistochemistry](#)
- [Immunofluorescence](#)
- [Immunoprecipitation](#)
- [Flow Cytometry](#)
- [Cell Culture](#)

## ASH1L Rabbit pAb - Images



Tissue/cell: rat brain tissue; 4% Paraformaldehyde-fixed and paraffin-embedded; Antigen retrieval: citrate buffer ( 0.01M, pH 6.0 ), Boiling bathing for 15min; Block endogenous peroxidase by 3% Hydrogen peroxide for 30min; Blocking buffer (normal goat serum,C-0005) at 37°C for 20 min; Incubation: Anti-KMT2H/ASH1L Polyclonal Antibody, Unconjugated(AP94295) 1:200, overnight at 4°C, followed by conjugation to the secondary antibody(SP-0023) and DAB(C-0010) staining

## ASH1L Rabbit pAb - Background

This product as supplied is intended for research use only, not for use in human, therapeutic or diagnostic applications.