

SERPINA9 Antibody (Center)
Affinity Purified Rabbit Polyclonal Antibody (Pab)
Catalog # AP9431c

Specification

SERPINA9 Antibody (Center) - Product Information

Application	IHC-P, FC,E
Primary Accession	Q86WD7
Reactivity	Human
Host	Rabbit
Clonality	Polyclonal
Isotype	Rabbit IgG
Antigen Region	194-222

SERPINA9 Antibody (Center) - Additional Information

Gene ID 327657

Other Names

Serpin A9, Centerin, Germinal center B-cell-expressed transcript 1 protein, SERPINA9, GCET1, SERPINA11

Target/Specificity

This SERPINA9 antibody is generated from rabbits immunized with a KLH conjugated synthetic peptide between 194-222 amino acids from the Central region of human SERPINA9.

Dilution

IHC-P~~1:10~50

FC~~1:10~50

E~~Use at an assay dependent concentration.

Format

Purified polyclonal antibody supplied in PBS with 0.09% (W/V) sodium azide. This antibody is purified through a protein A column, followed by peptide affinity purification.

Storage

Maintain refrigerated at 2-8°C for up to 2 weeks. For long term storage store at -20°C in small aliquots to prevent freeze-thaw cycles.

Precautions

SERPINA9 Antibody (Center) is for research use only and not for use in diagnostic or therapeutic procedures.

SERPINA9 Antibody (Center) - Protein Information

Name SERPINA9

Synonyms GCET1, SERPINA11

Function Protease inhibitor that inhibits trypsin and trypsin-like serine proteases (in vitro). Inhibits plasmin and thrombin with lower efficiency (in vitro).

Cellular Location

[Isoform 1]: Secreted. [Isoform 3]: Cytoplasm. [Isoform 5]: Cytoplasm. [Isoform 7]: Membrane; Single-pass type II membrane protein

Tissue Location

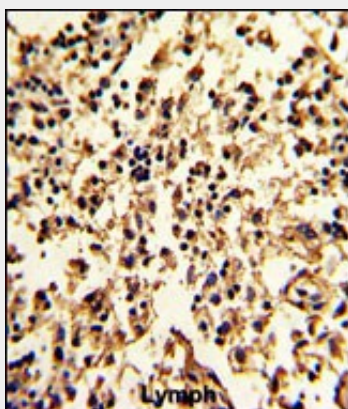
Highly expressed in normal germinal center (GC) B- cells and GC B-cell-derived malignancies.

SERPINA9 Antibody (Center) - Protocols

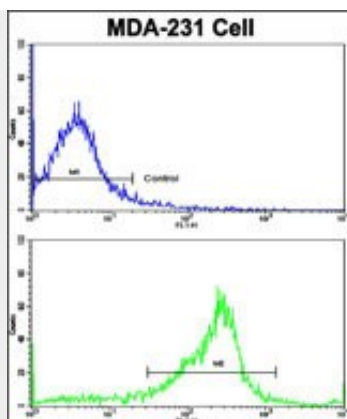
Provided below are standard protocols that you may find useful for product applications.

- [Western Blot](#)
- [Blocking Peptides](#)
- [Dot Blot](#)
- [Immunohistochemistry](#)
- [Immunofluorescence](#)
- [Immunoprecipitation](#)
- [Flow Cytometry](#)
- [Cell Culture](#)

SERPINA9 Antibody (Center) - Images



Formalin-fixed and paraffin-embedded human lymph with SERPINA9 Antibody (Center), which was peroxidase-conjugated to the secondary antibody, followed by DAB staining. This data demonstrates the use of this antibody for immunohistochemistry; clinical relevance has not been evaluated.



Flow cytometric analysis of MDA-231 cells using SERPINA9 Antibody (Center)(bottom histogram) compared to a negative control cell (top histogram). FITC-conjugated goat-anti-rabbit secondary antibodies were used for the analysis.

SERPINA9 Antibody (Center) - Background

SERPINA9 is a protease inhibitor that inhibits trypsin and trypsin-like serine proteases (in vitro). This protein inhibits plasmin and thrombin with lower efficiency (in vitro).

SERPINA9 Antibody (Center) - References

Luke, M.M., et al. Stroke 40(2):363-368(2009) Paterson, M.A., et al. Am. J. Clin. Pathol. 130(1):117-126(2008) Montes-Moreno, S., et al. Blood 111(1):351-358(2008) Shiffman, D., et al. Arterioscler. Thromb. Vasc. Biol. 28(1):173-179(2008) Morrison, A.C., et al. Cerebrovasc. Dis. 26(4):420-424(2008)

SERPINA9 Antibody (Center) - Citations

- [Germinal center B-cell-like diffuse large B-cell lymphoma of the duodenum is associated with t\(14;18\) translocation.](#)