

SERPINA1 Antibody (Center)
Purified Rabbit Polyclonal Antibody (Pab)
Catalog # AP9431d**Specification**

SERPINA1 Antibody (Center) - Product Information

Application	WB,E
Primary Accession	P01009
Reactivity	Human
Host	Rabbit
Clonality	Polyclonal
Isotype	Rabbit IgG
Calculated MW	46737
Antigen Region	158-187

SERPINA1 Antibody (Center) - Additional Information**Gene ID** 5265**Other Names**

Alpha-1-antitrypsin, Alpha-1 protease inhibitor, Alpha-1-antiproteinase, Serpin A1, Short peptide from AAT, SPAAT, SERPINA1, AAT, PI

Target/Specificity

This SERPINA1 antibody is generated from rabbits immunized with a KLH conjugated synthetic peptide between 158-187 amino acids from the Central region of human SERPINA1.

Dilution

WB~~1:1000

E~~Use at an assay dependent concentration.

Format

Purified polyclonal antibody supplied in PBS with 0.09% (W/V) sodium azide. This antibody is prepared by Saturated Ammonium Sulfate (SAS) precipitation followed by dialysis against PBS.

Storage

Maintain refrigerated at 2-8°C for up to 2 weeks. For long term storage store at -20°C in small aliquots to prevent freeze-thaw cycles.

Precautions

SERPINA1 Antibody (Center) is for research use only and not for use in diagnostic or therapeutic procedures.

SERPINA1 Antibody (Center) - Protein Information**Name** SERPINA1 ([HGNC:8941](#))**Synonyms** AAT, PI

Function Inhibitor of serine proteases. Its primary target is elastase, but it also has a moderate affinity for plasmin and thrombin. Irreversibly inhibits trypsin, chymotrypsin and plasminogen activator. The aberrant form inhibits insulin-induced NO synthesis in platelets, decreases coagulation time and has proteolytic activity against insulin and plasmin.

Cellular Location

Secreted. Endoplasmic reticulum. Note=The S and Z allele are not secreted effectively and accumulate intracellularly in the endoplasmic reticulum

Tissue Location

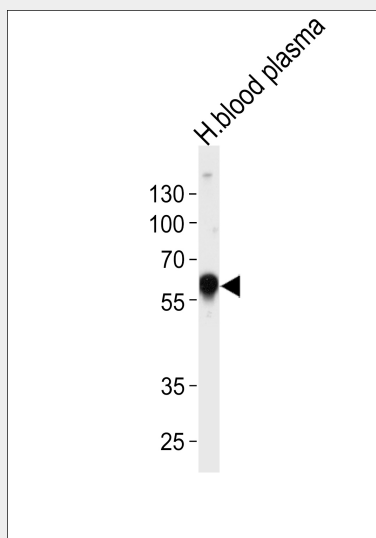
Ubiquitous. Expressed in leukocytes and plasma.

SERPINA1 Antibody (Center) - Protocols

Provided below are standard protocols that you may find useful for product applications.

- [Western Blot](#)
- [Blocking Peptides](#)
- [Dot Blot](#)
- [Immunohistochemistry](#)
- [Immunofluorescence](#)
- [Immunoprecipitation](#)
- [Flow Cytometry](#)
- [Cell Culture](#)

SERPINA1 Antibody (Center) - Images



Western blot analysis of lysate from human blood plasma tissue lysate, using SERPINA1 Antibody (Center)(Cat. #AP9431d). AP9431d was diluted at 1:1000 at each lane. A goat anti-rabbit IgG H&L(HRP) at 1:5000 dilution was used as the secondary antibody. Lysate at 35ug per lane.

SERPINA1 Antibody (Center) - Background

SERPINA1 is secreted and is a serine protease inhibitor whose targets include elastase, plasmin, thrombin, trypsin, chymotrypsin, and plasminogen activator. Defects in this gene can cause emphysema or liver disease.

SERPINA1 Antibody (Center) - References

Kilty, S.J., et al. Am J Rhinol Allergy 24 (1), E4-E9 (2010)
Kok, K.F., et al. BMC Gastroenterol 10, 22 (2010)
Dahl, M. Clin Respir J 3(2):121-122(2009)
Zhang, H., et al. Nat. Biotechnol. 21(6):660-666(2003)
Mills, K., et al. Glycobiology 13(2):73-85(2003)