

STRA6 Antibody (C-term)
Affinity Purified Rabbit Polyclonal Antibody (Pab)
Catalog # AP9433b

Specification

STRA6 Antibody (C-term) - Product Information

Application	WB, IHC-P,E
Primary Accession	Q9BX79
Reactivity	Human, Mouse
Host	Rabbit
Clonality	Polyclonal
Isotype	Rabbit IgG
Antigen Region	586-614

STRA6 Antibody (C-term) - Additional Information

Gene ID 64220

Other Names

Stimulated by retinoic acid gene 6 protein homolog, STRA6

Target/Specificity

This STRA6 antibody is generated from rabbits immunized with a KLH conjugated synthetic peptide between 586-614 amino acids from the C-terminal region of human STRA6.

Dilution

WB~~1:1000
IHC-P~~1:50~100

Format

Purified polyclonal antibody supplied in PBS with 0.09% (W/V) sodium azide. This antibody is purified through a protein A column, followed by peptide affinity purification.

Storage

Maintain refrigerated at 2-8°C for up to 2 weeks. For long term storage store at -20°C in small aliquots to prevent freeze-thaw cycles.

Precautions

STRA6 Antibody (C-term) is for research use only and not for use in diagnostic or therapeutic procedures.

STRA6 Antibody (C-term) - Protein Information

Name STRA6

Function Functions as a retinol transporter. Accepts all-trans retinol from the extracellular retinol-binding protein RBP4, facilitates retinol transport across the cell membrane, and then transfers retinol to the cytoplasmic retinol-binding protein RBP1 (PubMed:[9452451](#),

PubMed:[18316031](#), PubMed:[22665496](#)). Retinol uptake is enhanced by LRAT, an enzyme that converts retinol to all-trans retinyl esters, the storage forms of vitamin A (PubMed:[18316031](#), PubMed:[22665496](#)). Contributes to the activation of a signaling cascade that depends on retinol transport and LRAT-dependent generation of retinol metabolites that then trigger activation of JAK2 and its target STAT5, and ultimately increase the expression of SOCS3 and inhibit cellular responses to insulin (PubMed:[21368206](#), PubMed:[22665496](#)). Important for the homeostasis of vitamin A and its derivatives, such as retinoic acid (PubMed:[18316031](#)). STRA6-mediated transport is particularly important in the eye, and under conditions of dietary vitamin A deficiency (Probable). Does not transport retinoic acid (PubMed:[18316031](#)).

Cellular Location

Cell membrane; Multi-pass membrane protein. Note=In the retinal pigment epithelium localizes to the basolateral membrane. {ECO:0000250|UniProtKB:Q0V8E7}

Tissue Location

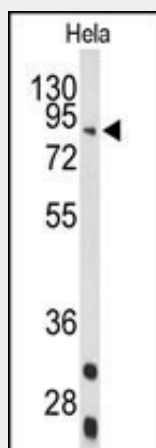
Broad expression. In adult eye expressed in sclera, retina, retinal pigment epithelium, and trabecular meshwork but not in choroid and iris.

STRA6 Antibody (C-term) - Protocols

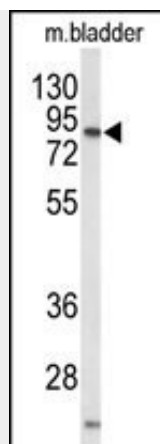
Provided below are standard protocols that you may find useful for product applications.

- [Western Blot](#)
- [Blocking Peptides](#)
- [Dot Blot](#)
- [Immunohistochemistry](#)
- [Immunofluorescence](#)
- [Immunoprecipitation](#)
- [Flow Cytometry](#)
- [Cell Culture](#)

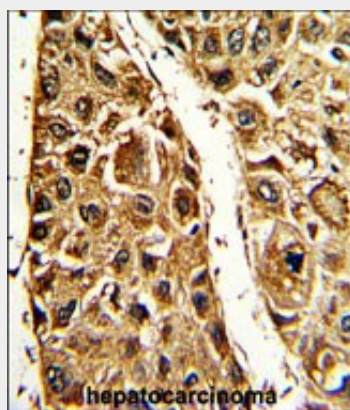
STRA6 Antibody (C-term) - Images



Western blot analysis of STRA6 Antibody (C-term) (Cat. #AP9433b) in HeLa cell line lysates (35ug/lane). UBAC1 (arrow) was detected using the purified Pab;



Western blot analysis of STRA6 Antibody (C-term) (Cat. #AP9433b) in mouse bladder tissue lysates (35ug/lane). STRA6 (arrow) was detected using the purified Pab.



Formalin-fixed and paraffin-embedded human hepatocarcinoma with STRA6 Antibody (C-term), which was peroxidase-conjugated to the secondary antibody, followed by DAB staining. This data demonstrates the use of this antibody for immunohistochemistry; clinical relevance has not been evaluated.

STRA6 Antibody (C-term) - Background

STRA6 is a membrane protein involved in the metabolism of retinol. The encoded protein acts as a receptor for retinol/retinol binding protein complexes. This protein removes the retinol from the complex and transports it across the cell membrane. Defects in this gene are a cause of syndromic microphthalmia type 9 (MCOPS9).

STRA6 Antibody (C-term) - References

Chassaing, N., et al. Hum. Mutat. 30 (5), E673-E681 (2009)
West, B., et al. Am. J. Med. Genet. A 149A (3), 539-542 (2009)
Kawaguchi, R., et al. J. Biol. Chem. 283(22):15160-15168(2008)
Isken, A., et al. Cell Metab. 7(3):258-268(2008)
White, T., et al. Mol. Vis. 14, 2458-2465 (2008)

STRA6 Antibody (C-term) - Citations

- [Electronegative Low-Density Lipoprotein Induces Renal Apoptosis and Fibrosis: STRA6 Signaling Involved.](#)