

MMS19 Rabbit pAb
MMS19 Rabbit pAb
Catalog # AP94361**Specification**

MMS19 Rabbit pAb - Product Information

Application	IHC-P, IHC-F, IF
Reactivity	Human
Host	Rabbit
Clonality	Polyclonal

MMS19 Rabbit pAb - Additional Information**Dilution**

IHC-P~N/A
IHC-F~N/A
IF~1:50~200

Format

0.01M TBS(pH7.4), 0.09% (W/V) sodium azide and 50% Glyce

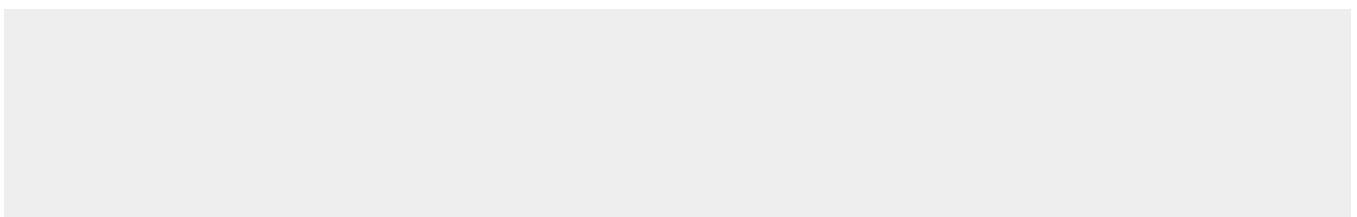
Storage

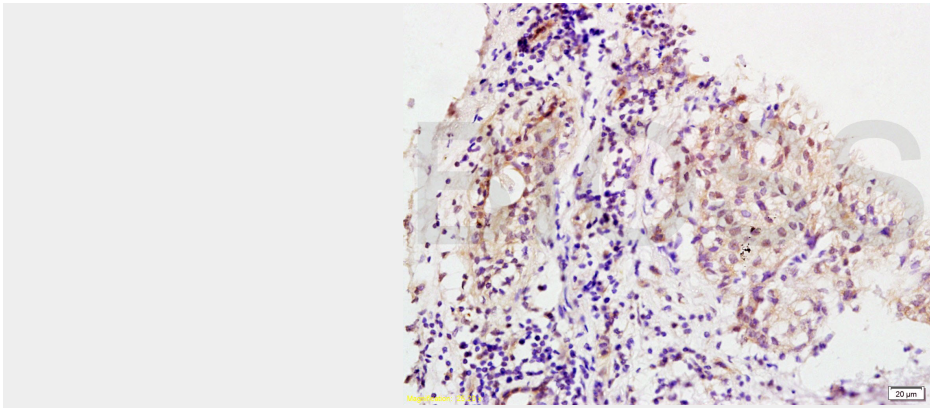
Store at -20 °C for one year. Avoid repeated freeze/thaw cycles. When reconstituted in sterile pH 7.4 0.01M PBS or diluent of antibody the antibody is stable for at least two weeks at 2-4 °C.

MMS19 Rabbit pAb - Protein Information**MMS19 Rabbit pAb - Protocols**

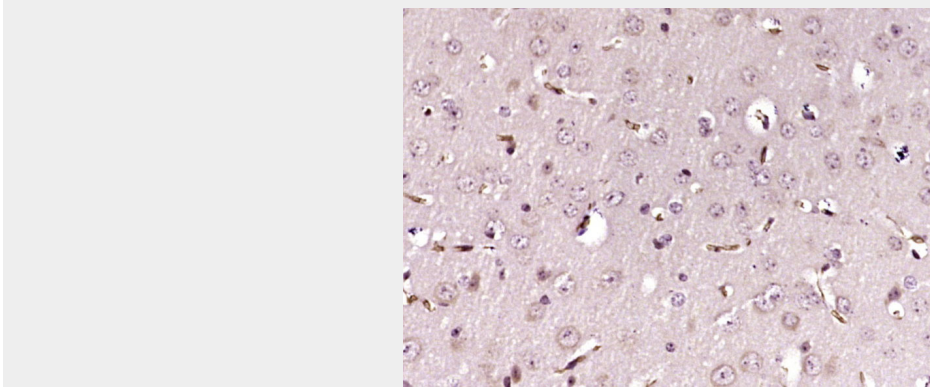
Provided below are standard protocols that you may find useful for product applications.

- [Western Blot](#)
- [Blocking Peptides](#)
- [Dot Blot](#)
- [Immunohistochemistry](#)
- [Immunofluorescence](#)
- [Immunoprecipitation](#)
- [Flow Cytometry](#)
- [Cell Culture](#)

MMS19 Rabbit pAb - Images



Tissue/cell: human breast carcinoma; 4% Paraformaldehyde-fixed and paraffin-embedded; Antigen retrieval: citrate buffer (0.01M, pH 6.0), Boiling bathing for 15min; Block endogenous peroxidase by 3% Hydrogen peroxide for 30min; Blocking buffer (normal goat serum,C-0005) at 37°C for 20 min; Incubation: Anti-MMS19 Polyclonal Antibody, Unconjugated(AP94361) 1:200, overnight at 4°C, followed by conjugation to the secondary antibody(SP-0023) and DAB(C-0010) staining



Paraformaldehyde-fixed, paraffin embedded (Mouse brain); Antigen retrieval by boiling in sodium citrate buffer (pH6.0) for 15min; Block endogenous peroxidase by 3% hydrogen peroxide for 20 minutes; Blocking buffer (normal goat serum) at 37°C for 30min; Antibody incubation with (MMS19) Polyclonal Antibody, Unconjugated (AP94361) at 1:200 overnight at 4°C, followed by operating according to SP Kit(Rabbit) (sp-0023) instructions and DAB staining.

MMS19 Rabbit pAb - Background

This product as supplied is intended for research use only, not for use in human, therapeutic or diagnostic applications.