

**FoxP1 Rabbit pAb**  
**FoxP1 Rabbit pAb**  
**Catalog # AP94414****Specification**

---

**FoxP1 Rabbit pAb - Product Information**

Application	IF, ICC
Primary Accession	<a href="#">P58462</a>
Reactivity	Mouse
Host	Rabbit
Clonality	Polyclonal
Calculated MW	79 KDa
Physical State	Liquid
Immunogen	KLH conjugated synthetic peptide derived from mouse FoxP1
Epitope Specificity	581-705/705
Isotype	IgG
<b>Purity</b> affinity purified by Protein A	
Buffer	0.01M TBS (pH7.4) with 1% BSA, 0.02% Proclin300 and 50% Glycerol.
SUBCELLULAR LOCATION	Nucleus.
SIMILARITY	Contains 1 C2H2-type zinc finger.Contains 1 fork-head DNA-binding domain.
SUBUNIT	Forms homodimers and heterodimers with FOXP2 and FOXP4. Dimerization is required for DNA-binding. Interacts with CTBP1.
Important Note	This product as supplied is intended for research use only, not for use in human, therapeutic or diagnostic applications.

**Background Descriptions**

This gene belongs to subfamily P of the forkhead box (FOX) transcription factor family. Forkhead box transcription factors play important roles in the regulation of tissue- and cell type-specific gene transcription during both development and adulthood. Forkhead box P1 protein contains both DNA-binding- and protein-protein binding-domains. This gene may act as a tumor suppressor as it is lost in several tumor types and maps to a chromosomal region (3p14.1) reported to contain a tumor suppressor gene(s). Alternative splicing results in multiple transcript variants encoding different isoforms. [provided by RefSeq, Jul 2008]

**FoxP1 Rabbit pAb - Additional Information****Gene ID** 108655**Other Names**

Forkhead box protein P1, Forkhead-related transcription factor 1, Foxp1

**Target/Specificity**

Highest expression in the lung, brain, and spleen. Lower expression in heart, skeletal muscle, kidney, small intestine (isoform 3 not present) and liver.

**Dilution**

<span class = "dilution\_IF">IF~1:50~200</span><br \><span class = "dilution\_ICC">ICC~N/A</span>

**Format**

0.01M TBS(pH7.4), 0.09% (W/V) sodium azide and 50% Glyce

**Storage**

Store at -20 °C for one year. Avoid repeated freeze/thaw cycles. When reconstituted in sterile pH 7.4 0.01M PBS or diluent of antibody the antibody is stable for at least two weeks at 2-4 °C.

**FoxP1 Rabbit pAb - Protein Information****Name** Foxp1**Function**

Transcriptional repressor. Can act with CTBP1 to synergistically repress transcription but CTPBP1 is not essential (PubMed: [11358962](http://www.uniprot.org/citations/11358962)), PubMed: [14701752](http://www.uniprot.org/citations/14701752)). Plays an important role in the specification and differentiation of lung epithelium. Acts cooperatively with FOXP4 to regulate lung secretory epithelial cell fate and regeneration by restricting the goblet cell lineage program; the function may involve regulation of AGR2 (PubMed: [11358962](http://www.uniprot.org/citations/11358962)), PubMed: [22675208](http://www.uniprot.org/citations/22675208)). Essential transcriptional regulator of B-cell development (PubMed: [16819554](http://www.uniprot.org/citations/16819554)). Involved in regulation of cardiac muscle cell proliferation (PubMed: [20713518](http://www.uniprot.org/citations/20713518)). Involved in the columnar organization of spinal motor neurons. Promotes the formation of the lateral motor neuron column (LMC) and the preganglionic motor column (PGC) and is required for respective appropriate motor axon projections. The segment-appropriate generation of spinal cord motor columns requires cooperation with other Hox proteins (PubMed: [18662545](http://www.uniprot.org/citations/18662545)), PubMed: [18667151](http://www.uniprot.org/citations/18667151)). Can regulate PITX3 promoter activity; may promote midbrain identity in embryonic stem cell-derived dopamine neurons by regulating PITX3 (PubMed: [20175877](http://www.uniprot.org/citations/20175877)). Negatively regulates the differentiation of T follicular helper cells T(FH)s (PubMed: [24859450](http://www.uniprot.org/citations/24859450)). Involved in maintenance of hair follicle stem cell quiescence; the function probably involves regulation of FGF18 (PubMed: [23946441](http://www.uniprot.org/citations/23946441)). Represses transcription of various pro-apoptotic genes and cooperates with NF-kappa B-signaling in promoting B-cell expansion by inhibition of caspase-dependent apoptosis. Binds to CSF1R promoter elements and is involved in regulation of monocyte differentiation and macrophage functions; repression of CSF1R in monocytes seems to involve NCOR2 as corepressor. Involved in endothelial cell proliferation, tube formation and migration indicative for a role in angiogenesis; the role in neovascularization seems to implicate suppression of SEMA5B. Can negatively regulate androgen receptor signaling (By similarity). Acts as a transcriptional activator of the FBXL7 promoter; this activity is regulated by AURKA (By similarity).

**Cellular Location**

Nucleus {ECO:0000250|UniProtKB:Q9H334}. Note=Not found in the nucleolus.

{ECO:0000250|UniProtKB:Q9H334}

### Tissue Location

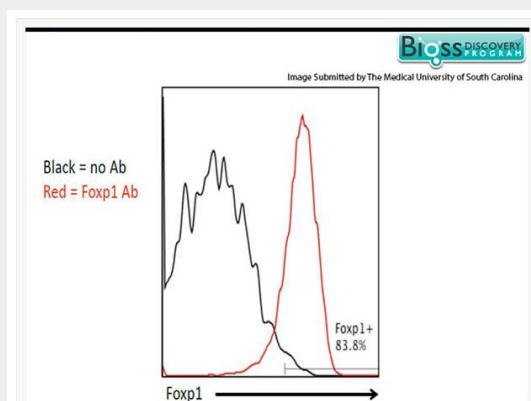
Isoform 5 is specifically expressed in embryonic stem cells (PubMed:21924763). Highest expression in the lung, brain, and spleen. Lower expression in heart, skeletal muscle, kidney, small intestine (isoform 3 not present) and liver

### FoxP1 Rabbit pAb - Protocols

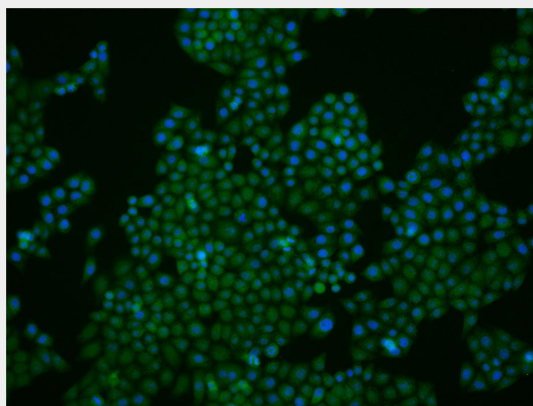
Provided below are standard protocols that you may find useful for product applications.

- [Western Blot](#)
- [Blocking Peptides](#)
- [Dot Blot](#)
- [Immunohistochemistry](#)
- [Immunofluorescence](#)
- [Immunoprecipitation](#)
- [Flow Cytometry](#)
- [Cell Culture](#)

### FoxP1 Rabbit pAb - Images



Pmel-1 splenocytes were stained with RABBIT ANTI-FOXP1 POLYCLONAL ANTIBODY, CONJUGATED (AP94414-A647). Accuri C6 flow cytometer was used for data acquisition



MCF7 cell; 4% Paraformaldehyde-fixed; Triton X-100 at room temperature for 20 min; Blocking buffer (normal goat serum, C-0005) at 37°C for 20 min; Antibody incubation with (FoxP1) polyclonal Antibody, Unconjugated (AP94414) 1:25, 90 minutes at 37°C; followed by a conjugated

Goat Anti-Rabbit IgG antibody at 37°C for 90 minutes, DAPI (blue, C02-04002) was used to stain the cell nuclei.

**FoxP1 Rabbit pAb - Background**

This product as supplied is intended for research use only, not for use in human, therapeutic or diagnostic applications.