

**AFM Antibody (N-term)**  
**Purified Rabbit Polyclonal Antibody (Pab)**  
**Catalog # AP9445a****Specification**

---

**AFM Antibody (N-term) - Product Information**

Application	WB,E
Primary Accession	<a href="#">P43652</a>
Reactivity	Human
Host	Rabbit
Clonality	Polyclonal
Isotype	Rabbit IgG
Calculated MW	69069
Antigen Region	49-76

**AFM Antibody (N-term) - Additional Information****Gene ID** 173**Other Names**

Afamin, Alpha-albumin, Alpha-Alb, AFM, ALB2, ALBA

**Target/Specificity**

This AFM antibody is generated from rabbits immunized with a KLH conjugated synthetic peptide between 49-76 amino acids from the N-terminal region of human AFM.

**Dilution**

WB~~1:1000

E~~Use at an assay dependent concentration.

**Format**

Purified polyclonal antibody supplied in PBS with 0.09% (W/V) sodium azide. This antibody is prepared by Saturated Ammonium Sulfate (SAS) precipitation followed by dialysis against PBS.

**Storage**

Maintain refrigerated at 2-8°C for up to 2 weeks. For long term storage store at -20°C in small aliquots to prevent freeze-thaw cycles.

**Precautions**

AFM Antibody (N-term) is for research use only and not for use in diagnostic or therapeutic procedures.

**AFM Antibody (N-term) - Protein Information****Name** AFM**Synonyms** ALB2, ALBA

**Function** Functions as a carrier for hydrophobic molecules in body fluids (Probable). Essential for the solubility and activity of lipidated Wnt family members, including WNT1, WNT2B, WNT3, WNT3A, WNT5A, WNT7A, WNT7B, WNT8, WNT9A, WNT9B, WNT10A and WNT10B (PubMed:[26902720](#)). Binds vitamin E (PubMed:[12463752](#), PubMed:[15952736](#)). May transport vitamin E in body fluids under conditions where the lipoprotein system is not sufficient (PubMed:[15952736](#)). May be involved in the transport of vitamin E across the blood-brain barrier (PubMed:[19046407](#)).

#### Cellular Location

Secreted

#### Tissue Location

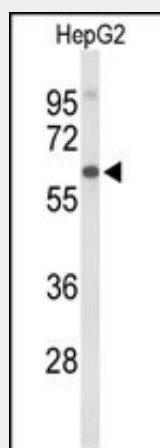
High level detected in plasma but also in extravascular fluids such as follicular and cerebrospinal fluids (at protein level).

### AFM Antibody (N-term) - Protocols

Provided below are standard protocols that you may find useful for product applications.

- [Western Blot](#)
- [Blocking Peptides](#)
- [Dot Blot](#)
- [Immunohistochemistry](#)
- [Immunofluorescence](#)
- [Immunoprecipitation](#)
- [Flow Cytometry](#)
- [Cell Culture](#)

### AFM Antibody (N-term) - Images



Western blot analysis of AFM Antibody (N-term) (Cat. #AP9445a) in HepG2 cell line lysates (35ug/lane). AFM (arrow) was detected using the purified Pab.

### AFM Antibody (N-term) - Background

AFM is a member of the albumin gene family, which is comprised of four genes that localize to chromosome 4 in a tandem arrangement. These four genes encode structurally-related serum transport proteins that are known to be evolutionarily related. The protein encoded by this gene is regulated developmentally, expressed in the liver and secreted into the bloodstream.

**AFM Antibody (N-term) - References**

Dieplinger, H., et al. Cancer Epidemiol. Biomarkers Prev. 18(4):1127-1133(2009)  
Kratzer, I., et al. J. Neurochem. 108(3):707-718(2009)  
Ramachandran, P., et al. J. Proteome Res. 5(6):1493-1503(2006)  
Hu, Y., et al. Mol. Cell Proteomics 4(12):2000-2009(2005)  
Liu, T., et al. J. Proteome Res. 4(6):2070-2080(2005)  
Bunkenborg, J., et al. Proteomics 4(2):454-465(2004)