

Di-Methyl-Histone H3 (Lys4) Rabbit pAb
Di-Methyl-Histone H3 (Lys4) Rabbit pAb
Catalog # AP94466**Specification**

Di-Methyl-Histone H3 (Lys4) Rabbit pAb - Product Information

Application	WB, IF, ICC
Host	Rabbit
Clonality	Polyclonal

Di-Methyl-Histone H3 (Lys4) Rabbit pAb - Additional Information**Dilution**

WB ~ 1:1000
IF ~ 1:50 ~ 200
ICC ~ N/A

Format

0.01M TBS(pH7.4), 0.09% (W/V) sodium azide and 50% Glyce

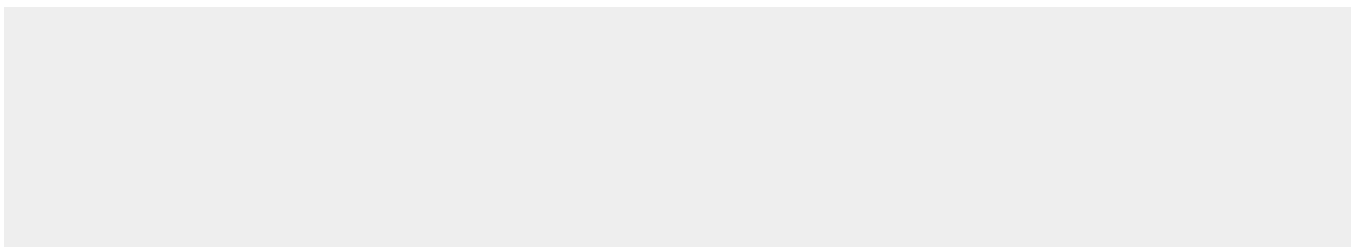
Storage

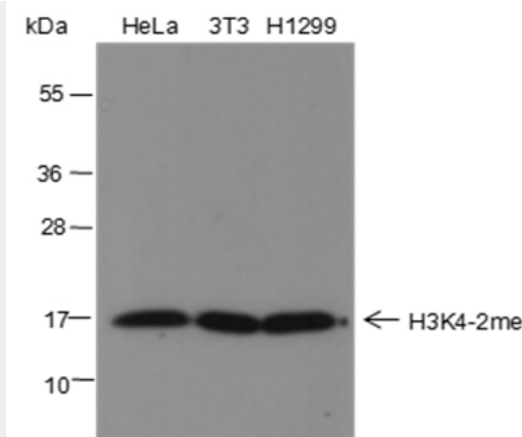
Store at -20 °C for one year. Avoid repeated freeze/thaw cycles. When reconstituted in sterile pH 7.4 0.01M PBS or diluent of antibody the antibody is stable for at least two weeks at 2-4 °C.

Di-Methyl-Histone H3 (Lys4) Rabbit pAb - Protein Information**Di-Methyl-Histone H3 (Lys4) Rabbit pAb - Protocols**

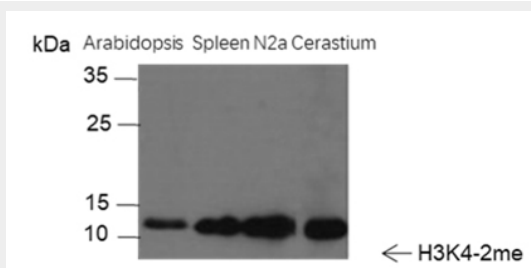
Provided below are standard protocols that you may find useful for product applications.

- [Western Blot](#)
- [Blocking Peptides](#)
- [Dot Blot](#)
- [Immunohistochemistry](#)
- [Immunofluorescence](#)
- [Immunoprecipitation](#)
- [Flow Cytometry](#)
- [Cell Culture](#)

Di-Methyl-Histone H3 (Lys4) Rabbit pAb - Images



Blocking buffer: 5% NFDM/TBST Primary ab dilution: 1:2000 Primary ab incubation condition: 2 hours at room temperature Secondary ab: Goat Anti-Rabbit IgG H&L (HRP) Lysate: HeLa, 3T3, H1299 Protein loading quantity: 20 µg Exposure time: 60 s Predicted MW: 17 kDa Observed MW: 17 kDa



Blocking buffer: 5% NFDM/TBST Primary ab dilution: 1:2000 Primary ab incubation condition: 2 hours at room temperature Secondary ab: Goat Anti-Rabbit IgG H&L (HRP) Lysate: Arabidopsis, Mouse spleen, N2a, Cerastium Protein loading quantity: 20 µg Exposure time: 60 s Predicted MW: 17 kDa Observed MW: 17 kDa

Di-Methyl-Histone H3 (Lys4) Rabbit pAb - Background

This product as supplied is intended for research use only, not for use in human, therapeutic or diagnostic applications.