

MPXV M1R Rabbit pAb
MPXV M1R Rabbit pAb
Catalog # AP94478**Specification**

MPXV M1R Rabbit pAb - Product Information

Application	WB
Host	Rabbit
Clonality	Polyclonal

MPXV M1R Rabbit pAb - Additional Information**Format**

0.01M TBS(pH7.4), 0.09% (W/V) sodium azide and 50% Glyce

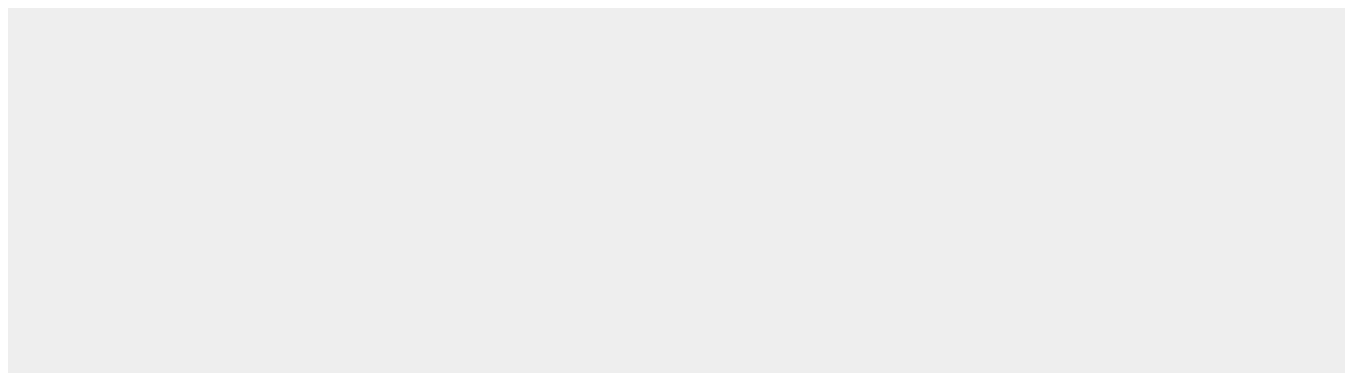
Storage

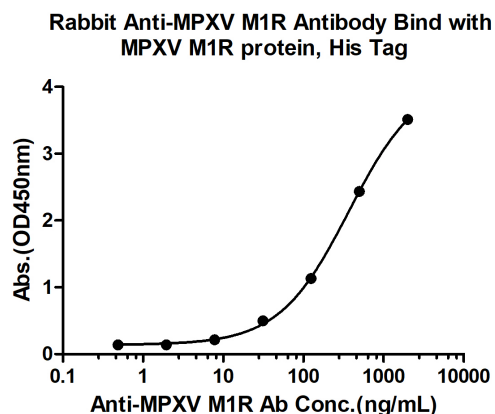
Store at -20 °C for one year. Avoid repeated freeze/thaw cycles. When reconstituted in sterile pH 7.4 0.01M PBS or diluent of antibody the antibody is stable for at least two weeks at 2-4 °C.

MPXV M1R Rabbit pAb - Protein Information**MPXV M1R Rabbit pAb - Protocols**

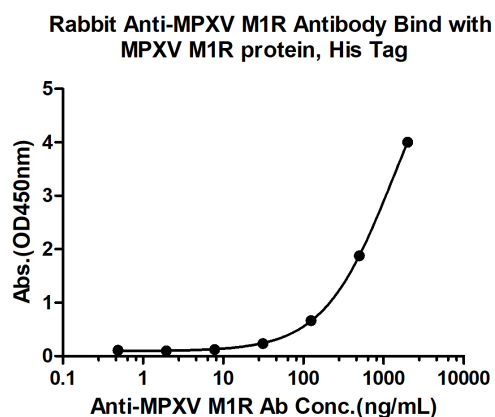
Provided below are standard protocols that you may find useful for product applications.

- [Western Blot](#)
- [Blocking Peptides](#)
- [Dot Blot](#)
- [Immunohistochemistry](#)
- [Immunofluorescence](#)
- [Immunoprecipitation](#)
- [Flow Cytometry](#)
- [Cell Culture](#)

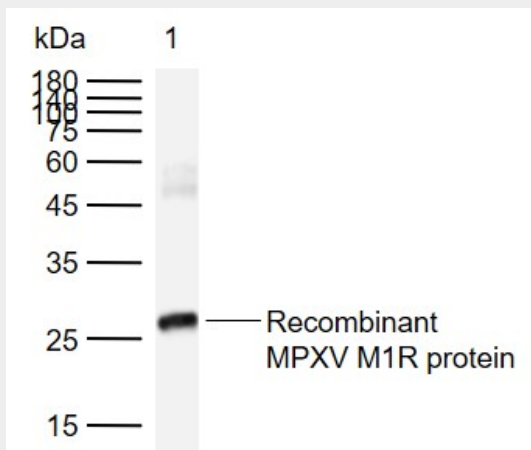
MPXV M1R Rabbit pAb - Images



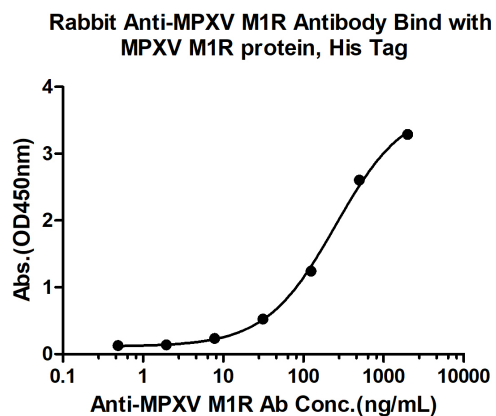
Measured by its binding ability in a indirect ELISA. Immobilized MPXV M1R protein, His Tag (Cat. bs-42062P) at 2 µg/mL (100 µL/well) can bind Rabbit Anti-MPXV M1R Antibody, the EC50 is 369.2 ng/mL.



Measured by its binding ability in a indirect ELISA. Immobilized MPXV M1R protein, His Tag (Cat. bs-42062P) at 2 µg/mL (100 µL/well) can bind Rabbit Anti-MPXV M1R Antibody, the EC50 is 1309 ng/mL.



Sample: Lane 1: Recombinant human VEGFR1 protein, C-His (HEK293) Primary: Anti-MPXV M1R (AP94478) at 1/1000 dilution Secondary: IRDye800CW Goat Anti-Rabbit IgG at 1/20000 dilution Predicted band size: 27 kDa Observed band size: 27 kDa



Measured by its binding ability in a indirect ELISA. Immobilized MPXV M1R protein, His Tag (Cat. bs-42062P) at 2 µg/mL (100 µL/well) can bind Rabbit Anti-MPXV M1R Antibody, the EC50 is 251.4 ng/mL.

MPXV M1R Rabbit pAb - Background

This product as supplied is intended for research use only, not for use in human, therapeutic or diagnostic applications.