

DGCR2 Antibody (Center)
Affinity Purified Rabbit Polyclonal Antibody (Pab)
Catalog # AP9451c**Specification**

DGCR2 Antibody (Center) - Product Information

Application	WB,E
Primary Accession	P98153
Other Accession	P98154
Reactivity	Human, Mouse
Host	Rabbit
Clonality	Polyclonal
Isotype	Rabbit IgG
Calculated MW	60811
Antigen Region	265-292

DGCR2 Antibody (Center) - Additional Information**Gene ID** 9993**Other Names**

Integral membrane protein DGCR2/IDD, DGCR2, IDD, KIAA0163

Target/Specificity

This DGCR2 antibody is generated from rabbits immunized with a KLH conjugated synthetic peptide between 265-292 amino acids from the Central region of human DGCR2.

Dilution

WB~~1:1000

E~~Use at an assay dependent concentration.

Format

Purified polyclonal antibody supplied in PBS with 0.09% (W/V) sodium azide. This antibody is purified through a protein A column, followed by peptide affinity purification.

Storage

Maintain refrigerated at 2-8°C for up to 2 weeks. For long term storage store at -20°C in small aliquots to prevent freeze-thaw cycles.

Precautions

DGCR2 Antibody (Center) is for research use only and not for use in diagnostic or therapeutic procedures.

DGCR2 Antibody (Center) - Protein Information**Name** DGCR2**Synonyms** IDD, KIAA0163

Function Putative adhesion receptor, that could be involved in cell- cell or cell-matrix interactions required for normal cell differentiation and migration.

Cellular Location

Membrane; Single-pass type I membrane protein.

Tissue Location

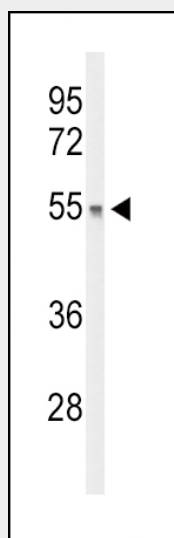
Predominantly expressed in brain, heart, lung and fetal kidney. Low levels in liver and adult kidney

DGCR2 Antibody (Center) - Protocols

Provided below are standard protocols that you may find useful for product applications.

- [Western Blot](#)
- [Blocking Peptides](#)
- [Dot Blot](#)
- [Immunohistochemistry](#)
- [Immunofluorescence](#)
- [Immunoprecipitation](#)
- [Flow Cytometry](#)
- [Cell Culture](#)

DGCR2 Antibody (Center) - Images



Western blot analysis of DGCR2 Antibody (Center) (Cat. #AP9451c) in mouse liver tissue lysates (35ug/lane). DGCR2 (arrow) was detected using the purified Pab.

DGCR2 Antibody (Center) - Background

DGCR2 encodes a novel putative adhesion receptor protein, which could play a role in neural crest cells migration, a process which has been proposed to be altered in DiGeorge syndrome.

DGCR2 Antibody (Center) - References

Georgi, A., et al. Psychiatr. Genet. 19 (2), 104 (2009)
Wang, P., et al. BMC Genomics 10, 518 (2009)
Ishiguro, H., et al. Psychiatr. Genet. 18(5):255-256(2008)

Pellikka, M., et al. J. Thromb. Thrombolysis 26(2):91-96(2008)
Olsen, J.V., et al. Cell 127(3):635-648(2006)