

ALDH1L1 Recombinant Rabbit mAb

ALDH1L1 Recombinant Rabbit mAb

Catalog # AP94550

Specification

ALDH1L1 Recombinant Rabbit mAb - Product Information

Application	WB, IHC-P, IHC-F, IF, ICC
Host	Rabbit
Clonality	Recombinant
Calculated MW	100 KDa
Physical State	Liquid
Immunogen	A synthesized peptide derived from human ALDH1L1
Epitope Specificity	180-300
Isotype	IgG/Kappa
Purity	
affinity purified by Protein A	
Buffer	0.01M TBS (pH7.4) with 1% BSA, 0.02% Proclin300 and 50% Glycerol.
SUBCELLULAR LOCATION	Cytoplasm.
Important Note	This product as supplied is intended for research use only, not for use in human, therapeutic or diagnostic applications.

Background Descriptions

The protein encoded by this gene catalyzes the conversion of 10-formyltetrahydrofolate, nicotinamide adenine dinucleotide phosphate (NADP+), and water to tetrahydrofolate, NADPH, and carbon dioxide. The encoded protein belongs to the aldehyde dehydrogenase family. Loss of function or expression of this gene is associated with decreased apoptosis, increased cell motility, and cancer progression. There is an antisense transcript that overlaps on the opposite strand with this gene locus. Alternative splicing results in multiple transcript variants. [provided by RefSeq, Jun 2012]

ALDH1L1 Recombinant Rabbit mAb - Additional Information

Target/Specificity

Highly expressed in liver, pancreas and kidney.

Dilution

WB~~1:1000<br \>IHC-P~~N/A<br \>IHC-F~~N/A<br \>IF~~1:50~200<br \>ICC~~N/A

Format

0.01M TBS(pH7.4), 0.09% (W/V) sodium azide and 50% Glyce

Storage

Store at -20 °C for one year. Avoid repeated freeze/thaw cycles. When reconstituted in sterile pH

7.4 0.01M PBS or diluent of antibody the antibody is stable for at least two weeks at 2-4 °C.

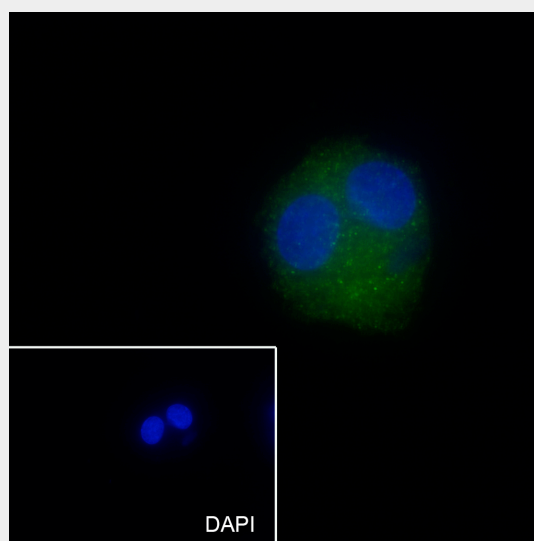
ALDH1L1 Recombinant Rabbit mAb - Protein Information

ALDH1L1 Recombinant Rabbit mAb - Protocols

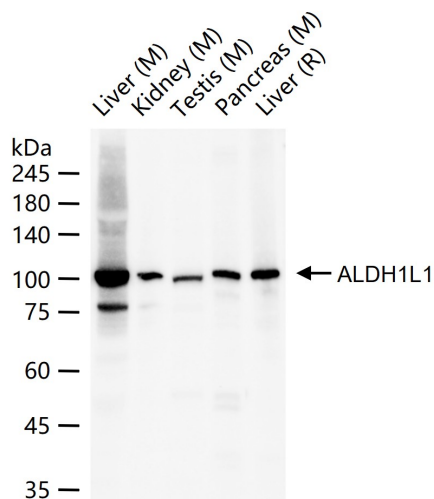
Provided below are standard protocols that you may find useful for product applications.

- [Western Blot](#)
- [Blocking Peptides](#)
- [Dot Blot](#)
- [Immunohistochemistry](#)
- [Immunofluorescence](#)
- [Immunoprecipitation](#)
- [Flow Cytometry](#)
- [Cell Culture](#)

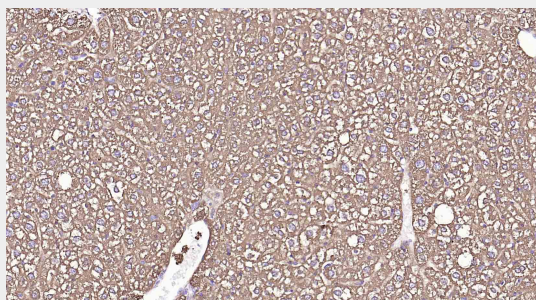
ALDH1L1 Recombinant Rabbit mAb - Images



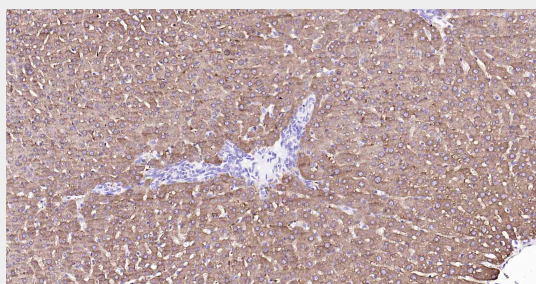
Cell line: HepG2 Fixative: 4% Paraformaldehyde Permeabilization: 0.1% TritonX-100 Primary ab dilution: 1:50 Primary incubation condition: 4°C overnight Secondary ab: Goat Anti-Rabbit IgG Nuclear counter stain: DAPI (Blue) Comment: Color green is the positive signal for AP94550



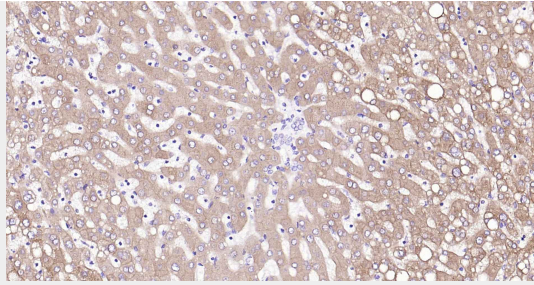
25 ug total protein per lane of various lysates (see on figure) probed with ALDH1L1 monoclonal antibody, unconjugated (AP94550) at 1:1000 dilution and 4°C overnight incubation. Followed by conjugated secondary antibody incubation at r.t. for 60 min.



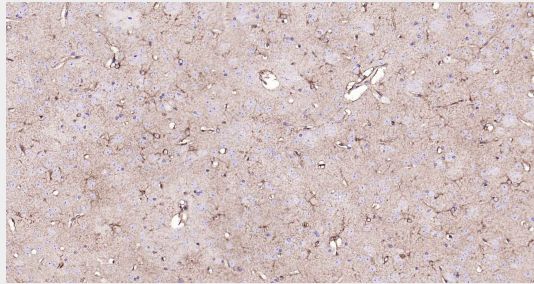
Paraformaldehyde-fixed, paraffin embedded Mouse Liver; Antigen retrieval by boiling in sodium citrate buffer (pH6.0) for 15 min; Antibody incubation with ALDH1L1 Monoclonal Antibody, Unconjugated(AP94550) at 1:200 overnight at 4°C, followed by conjugation to the SP Kit (Rabbit, SP-0023) and DAB (C-0010) staining.



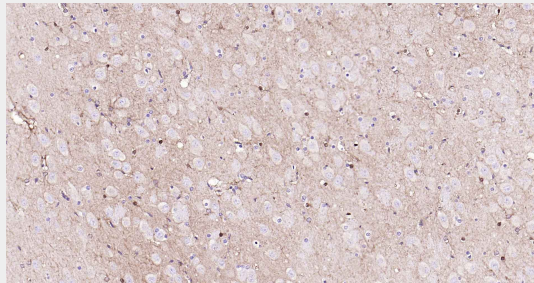
Paraformaldehyde-fixed, paraffin embedded Rat Liver; Antigen retrieval by boiling in sodium citrate buffer (pH6.0) for 15 min; Antibody incubation with ALDH1L1 Monoclonal Antibody, Unconjugated(AP94550) at 1:200 overnight at 4°C, followed by conjugation to the SP Kit (Rabbit, SP-0023) and DAB (C-0010) staining.



Paraformaldehyde-fixed, paraffin embedded Human Liver; Antigen retrieval by boiling in sodium citrate buffer (pH6.0) for 15 min; Antibody incubation with ALDH1L1 Monoclonal Antibody, Unconjugated(AP94550) at 1:200 overnight at 4°C, followed by conjugation to the SP Kit (Rabbit, SP-0023) and DAB (C-0010) staining.



Paraformaldehyde-fixed, paraffin embedded Mouse Cerebrum; Antigen retrieval by boiling in sodium citrate buffer (pH6.0) for 15 min; Antibody incubation with ALDH1L1 Monoclonal Antibody, Unconjugated(AP94550) at 1:200 overnight at 4°C, followed by conjugation to the SP Kit (Rabbit, SP-0023) and DAB (C-0010) staining.



Paraformaldehyde-fixed, paraffin embedded Rat Cerebrum; Antigen retrieval by boiling in sodium citrate buffer (pH6.0) for 15 min; Antibody incubation with ALDH1L1 Monoclonal Antibody, Unconjugated(AP94550) at 1:200 overnight at 4°C, followed by conjugation to the SP Kit (Rabbit, SP-0023) and DAB (C-0010) staining.

ALDH1L1 Recombinant Rabbit mAb - Background

This product as supplied is intended for research use only, not for use in human, therapeutic or diagnostic applications.