

**ALDH6A1 Mouse mAb**  
**ALDH6A1 Mouse mAb**  
**Catalog # AP94563****Specification**

---

**ALDH6A1 Mouse mAb - Product Information**

Application	<b>IHC-P, WB</b>
Reactivity	<b>Human</b>
Host	<b>Rabbit</b>
Clonality	<b>Monoclonal</b>

**ALDH6A1 Mouse mAb - Additional Information****Format**

0.01M TBS(pH7.4), 0.09% (W/V) sodium azide and 50% Glyce

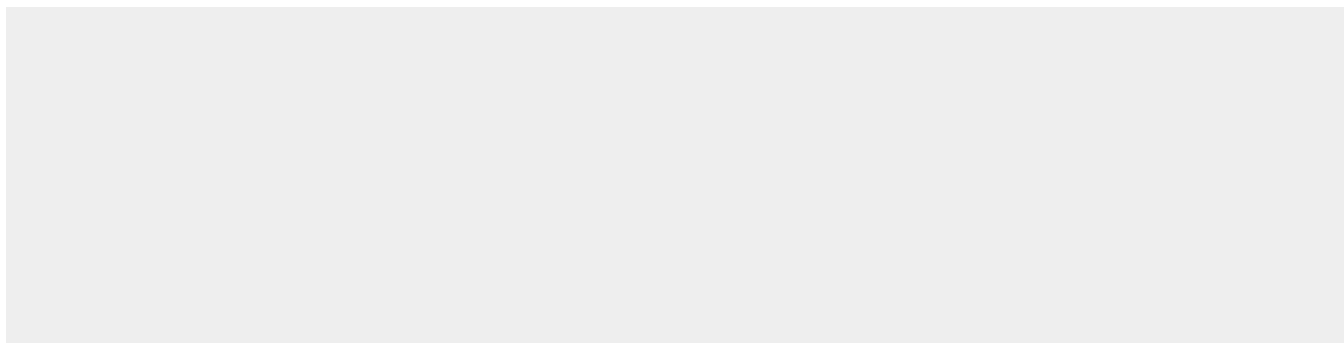
**Storage**

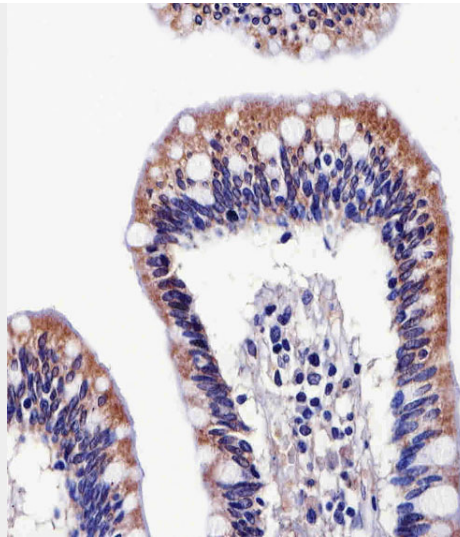
Store at -20 °C for one year. Avoid repeated freeze/thaw cycles. When reconstituted in sterile pH 7.4 0.01M PBS or diluent of antibody the antibody is stable for at least two weeks at 2-4 °C.

**ALDH6A1 Mouse mAb - Protein Information****ALDH6A1 Mouse mAb - Protocols**

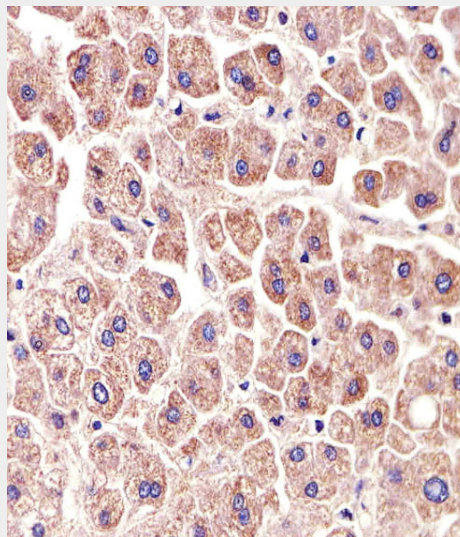
Provided below are standard protocols that you may find useful for product applications.

- [Western Blot](#)
- [Blocking Peptides](#)
- [Dot Blot](#)
- [Immunohistochemistry](#)
- [Immunofluorescence](#)
- [Immunoprecipitation](#)
- [Flow Cytometry](#)
- [Cell Culture](#)

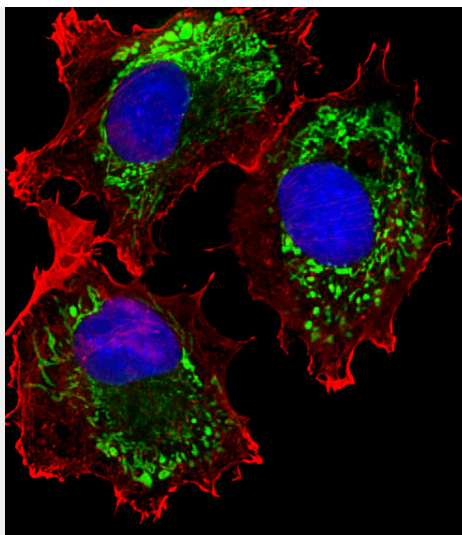
**ALDH6A1 Mouse mAb - Images**



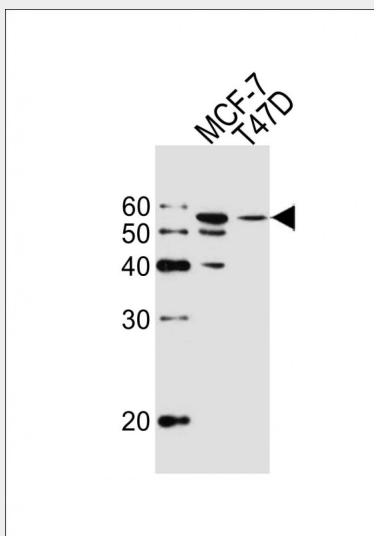
Paraformaldehyde-fixed, paraffin embedded ( human colon section); Antigen retrieval by boiling in sodium citrate buffer (pH6.0) for 15min; Block endogenous peroxidase by 3% hydrogen peroxide for 20 minutes; Blocking buffer (normal goat serum) at 37°C for 30min; Antibody incubation with (ALDH6A1) Monoclonal Antibody, Unconjugated (AP94563) at 1:200 overnight at 4°C, followed by operating according to SP Kit(Mouse)(sp-0024) instructions and DAB staining.



Paraformaldehyde-fixed, paraffin embedded ( human LIVER section); Antigen retrieval by boiling in sodium citrate buffer (pH6.0) for 15min; Block endogenous peroxidase by 3% hydrogen peroxide for 20 minutes; Blocking buffer (normal goat serum) at 37°C for 30min; Antibody incubation with (ALDH6A1) Monoclonal Antibody, Unconjugated (AP94563) at 1:200 overnight at 4°C, followed by operating according to SP Kit(Mouse)(sp-0024) instructions and DAB staining.



MCF7 cell; 4% Paraformaldehyde-fixed; Triton X-100 at room temperature for 20 min; Blocking buffer (normal goat serum, C-0005) at 37°C for 20 min; Antibody incubation with (ALDH6A1) monoclonal Antibody, Unconjugated (AP94563) 1:25, 90 minutes at 37°C; followed by a conjugated Goat Anti-Mouse IgG antibody at 37°C for 90 minutes, DAPI (blue, C02-04002) was used to stain the cell nuclei. Alexa Fluor® 555 conjugated with Phalloidin (red) was used to stain the cell Cytoplasmic actin .



Sample: Lane 1: MCF-7 cell lysates Lane 2: T47D cell lysates Primary: Anti-ALDH6A1 (AP94563) at 1:1000 dilution Secondary: IRDye800CW Goat Anti-Mouse IgG at 1/20000 dilution Predicted band size: 59 kD Observed band size: 56 kD

#### **ALDH6A1 Mouse mAb - Background**

This product as supplied is intended for research use only, not for use in human, therapeutic or diagnostic applications.