

**Tri-Methyl-Histone H3 (Lys27) Rabbit pAb**  
**Tri-Methyl-Histone H3 (Lys27) Rabbit pAb**  
**Catalog # AP94601****Specification**

---

**Tri-Methyl-Histone H3 (Lys27) Rabbit pAb - Product Information**

Application	IHC-P, WB
Host	Rabbit
Clonality	Polyclonal

**Tri-Methyl-Histone H3 (Lys27) Rabbit pAb - Additional Information****Format**

0.01M TBS(pH7.4), 0.09% (W/V) sodium azide and 50% Glyce

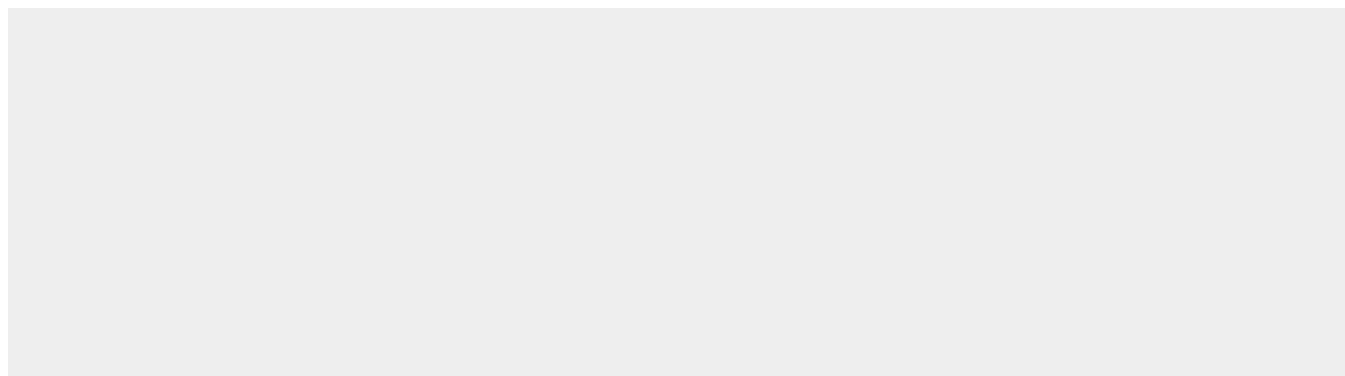
**Storage**

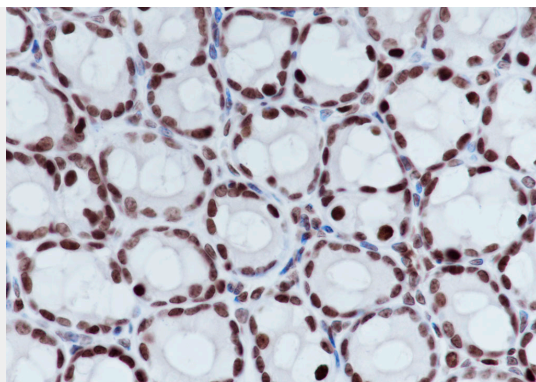
Store at -20 °C for one year. Avoid repeated freeze/thaw cycles. When reconstituted in sterile pH 7.4 0.01M PBS or diluent of antibody the antibody is stable for at least two weeks at 2-4 °C.

**Tri-Methyl-Histone H3 (Lys27) Rabbit pAb - Protein Information****Tri-Methyl-Histone H3 (Lys27) Rabbit pAb - Protocols**

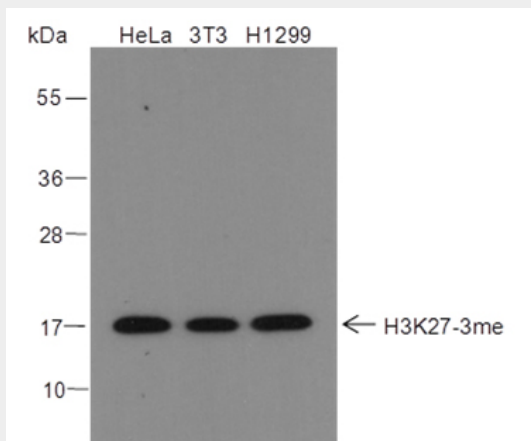
Provided below are standard protocols that you may find useful for product applications.

- [Western Blot](#)
- [Blocking Peptides](#)
- [Dot Blot](#)
- [Immunohistochemistry](#)
- [Immunofluorescence](#)
- [Immunoprecipitation](#)
- [Flow Cytometry](#)
- [Cell Culture](#)

**Tri-Methyl-Histone H3 (Lys27) Rabbit pAb - Images**



Tissue: Mouse colon Section type: Formalin fixed & Paraffin -embedded section Retrieval method: High temperature and high pressure Retrieval buffer: Tris/EDTA buffer, pH 9.0 Primary ab dilution: 1:1000 Primary ab incubation condition: 1 hour at room temperature Secondary ab: SP Kit(Rabbit) (sp-0023) Counter stain: Hematoxylin (Blue) Comment: Color brown is the positive signal for AP94601



Blocking buffer: 5% NFDM/TBST Primary ab dilution: 1:2000 Primary ab incubation condition: 2 hours at room temperature Secondary ab: Goat Anti-Rabbit IgG H&L (HRP) Lysate: HeLa, 3T3, H1299 Protein loading quantity: 20 µg Exposure time: 60 s Predicted MW: 17 kDa Observed MW: 17 kDa

### Tri-Methyl-Histone H3 (Lys27) Rabbit pAb - Background

This product as supplied is intended for research use only, not for use in human, therapeutic or diagnostic applications.