

Slco1a1 Rabbit pAb
Slco1a1 Rabbit pAb
Catalog # AP94652**Specification**

Slco1a1 Rabbit pAb - Product Information

Application	WB, IHC-P, IHC-F, IF
Primary Accession	P46720
Reactivity	Rat
Host	Rabbit
Clonality	Polyclonal
Calculated MW	74 KDa
Physical State	Liquid
Immunogen	KLH conjugated synthetic peptide derived from rat Slco1a1
Epitope Specificity	2-90/670
Isotype	IgG
Purity	
affinity purified by Protein A	
Buffer	0.01M TBS (pH7.4) with 1% BSA, 0.02% Proclin300 and 50% Glycerol.
SUBCELLULAR LOCATION	Basolateral cell membrane
SIMILARITY	Belongs to the organo anion transporter (TC 2.A.60) family. [SIMILARITY] Contains 1 Kazal-like domain.
SUBUNIT	Binds to PDZK1. Interaction with PDZK1 is required for expression on hepatocyte surface.
Post-translational modifications	Glycosylated.
Important Note	This product as supplied is intended for research use only, not for use in human, therapeutic or diagnostic applications.

Background Descriptions

mediates the transport of sulfated, amidated bile acid, sulfolithocholytaurine, into rat hepatocytes

Slco1a1 Rabbit pAb - Additional Information

Gene ID 50572

Other Names

Solute carrier organic anion transporter family member 1A1, Organic anion-transporting polypeptide 1, OATP-1, Sodium-independent organic anion transporter 1, Solute carrier family 21 member 1, Slco1a1 {ECO:0000312|RGD:3700}

Target/Specificity

Highly expressed in liver and kidney, and at lower levels in brain, lung, skeletal muscle and proximal colon.

Dilution

WB~~1:1000<br \>IHC-P~~N/A<br \>IHC-F~~N/A<br \>IF~~1:50~200

Format

0.01M TBS(pH7.4), 0.09% (W/V) sodium azide and 50% Glyce

Storage

Store at -20 °C for one year. Avoid repeated freeze/thaw cycles. When reconstituted in sterile pH 7.4 0.01M PBS or diluent of antibody the antibody is stable for at least two weeks at 2-4 °C.

Slco1a1 Rabbit pAb - Protein Information

Name Slco1a1 {ECO:0000312|RGD:3700}

Function

Mediates the Na(+)-independent transport of organic anions such as steroid sulfate conjugates (dehydroepiandrosterone sulfate (DHEAS), 17-beta-glucuronosyl estradiol, estrone-3-sulfate), conjugated (taurocholate) and unconjugated (cholate) bile acids, prostaglandin E2 (PGE2) and L-thyroxine T4 (PubMed:19129463). Also capable of transporting sulfobromophthalein (BSP), ouabain and gadoxetate (By similarity). Hydrogencarbonate/HCO3(-) acts as the probable counteranion that exchanges for organic anions (PubMed:19129463). Shows a pH-sensitive substrate specificity which may be ascribed to the protonation state of the binding site and leads to a stimulation of substrate transport in an acidic microenvironment (PubMed:19129463).

Cellular Location

Basolateral cell membrane; Multi-pass membrane protein

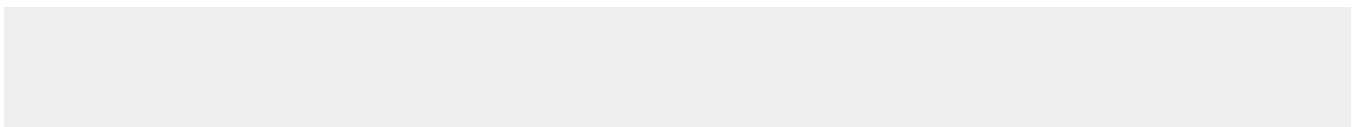
Tissue Location

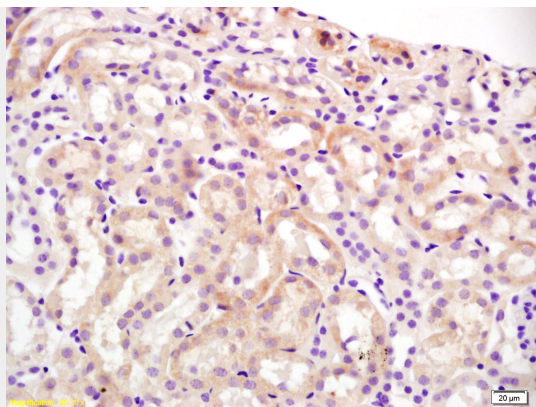
Highly expressed in liver and kidney, and at lower levels in brain, lung, skeletal muscle and proximal colon

Slco1a1 Rabbit pAb - Protocols

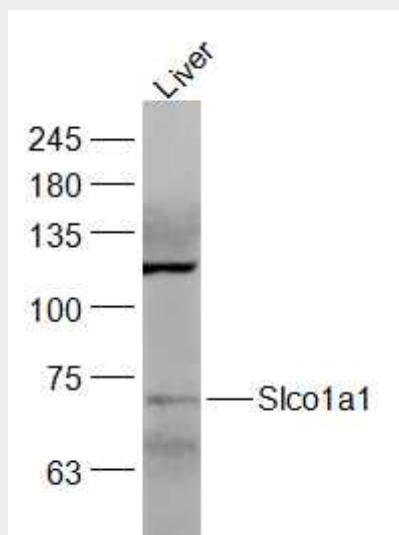
Provided below are standard protocols that you may find useful for product applications.

- [Western Blot](#)
- [Blocking Peptides](#)
- [Dot Blot](#)
- [Immunohistochemistry](#)
- [Immunofluorescence](#)
- [Immunoprecipitation](#)
- [Flow Cytometry](#)
- [Cell Culture](#)

Slco1a1 Rabbit pAb - Images



Tissue/cell: mouse kidney tissue; 4% Paraformaldehyde-fixed and paraffin-embedded; Antigen retrieval: citrate buffer (0.01M, pH 6.0), Boiling bathing for 15min; Block endogenous peroxidase by 3% Hydrogen peroxide for 30min; Blocking buffer (normal goat serum,C-0005) at 37°C for 20 min; Incubation: Anti-OATP-1/Slco1a1 Polyclonal Antibody, Unconjugated(AP94652) 1:200, overnight at 4°C, followed by conjugation to the secondary antibody(SP-0023) and DAB(C-0010) staining



Sample: Liver (Mouse) Lysate at 40 ug Primary: Anti-Slco1a1 (AP94652) at 1/1000 dilution
Secondary: IRDye800CW Goat Anti-Rabbit IgG at 1/20000 dilution Predicted band size: 74 kD
Observed band size: 73 kD

Slco1a1 Rabbit pAb - Background

This product as supplied is intended for research use only, not for use in human, therapeutic or diagnostic applications.