

**IL28 Receptor alpha Rabbit pAb**  
**IL28 Receptor alpha Rabbit pAb**  
**Catalog # AP94679****Specification****IL28 Receptor alpha Rabbit pAb - Product Information**

Application	WB
Primary Accession	<a href="#">Q8CGK5</a>
Reactivity	Mouse
Host	Rabbit
Clonality	Polyclonal
Calculated MW	56 KDa
Physical State	Liquid
Immunogen	KLH conjugated synthetic peptide derived from mouse IL28 Receptor alpha
Epitope Specificity	21-120/520
Isotype	IgG
<b>Purity</b>	
affinity purified by Protein A	
Buffer	0.01M TBS (pH7.4) with 1% BSA, 0.02% Proclin300 and 50% Glycerol.
SUBCELLULAR LOCATION	Membrane; Single-pass type I membrane protein
SIMILARITY	Belongs to the type II cytokine receptor family. Contains 1 fibronectin type-III domain.
SUBUNIT	Heterodimer with IL10RB.
Important Note	This product as supplied is intended for research use only, not for use in human, therapeutic or diagnostic applications.

**Background Descriptions**

The protein encoded by this gene belongs to the class II cytokine receptor family. This protein forms a receptor complex with interleukine 10 receptor, beta (IL10RB). The receptor complex has been shown to interact with three closely related cytokines, including interleukin 28A (IL28A), interleukin 28B (IL28B), and interleukin 29 (IL29). The expression of all three cytokines can be induced by viral infection. The cells overexpressing this protein have been found to have enhanced responses to IL28A and IL29, but decreased response to IL28B. Three alternatively spliced transcript variants encoding distinct isoforms have been reported. [provided by RefSeq, Jul 2008]

**IL28 Receptor alpha Rabbit pAb - Additional Information****Gene ID** 242700**Other Names**

Interferon lambda receptor 1, IFN-lambda R1, Cytokine receptor class-II member 12, Cytokine receptor family 2 member 12, CRF2-12, Interleukin-28 receptor subunit alpha, IL-28 receptor subunit alpha, IL-28R-alpha, IL-28RA, Ifnlr1, IL28ra

**Target/Specificity**

Widely expressed.

**Dilution**

<span class = "dilution\_WB">WB~~1:1000</span>

**Format**

0.01M TBS(pH7.4), 0.09% (W/V) sodium azide and 50% Glyce

**Storage**

Store at -20 °C for one year. Avoid repeated freeze/thaw cycles. When reconstituted in sterile pH 7.4 0.01M PBS or diluent of antibody the antibody is stable for at least two weeks at 2-4 °C.

**IL28 Receptor alpha Rabbit pAb - Protein Information**

**Name** Ifnlr1

**Synonyms** Il28ra

**Function**

The IFNLR1/IL10RB dimer is a receptor for the cytokine ligands IFNL2 and IFNL3 and mediates their antiviral activity. The ligand/receptor complex stimulate the activation of the JAK/STAT signaling pathway leading to the expression of IFN-stimulated genes (ISG), which contribute to the antiviral state. Determines the cell type specificity of the lambda interferon action. Shows a more restricted pattern of expression in the epithelial tissues thereby limiting responses to lambda interferons primarily to epithelial cells of the respiratory, gastrointestinal, and reproductive tracts. Seems not to be essential for early virus-activated host defense in vaginal infection, but plays an important role in Toll-like receptor (TLR)- induced antiviral defense. Plays a significant role in the antiviral immune defense in the intestinal epithelium.

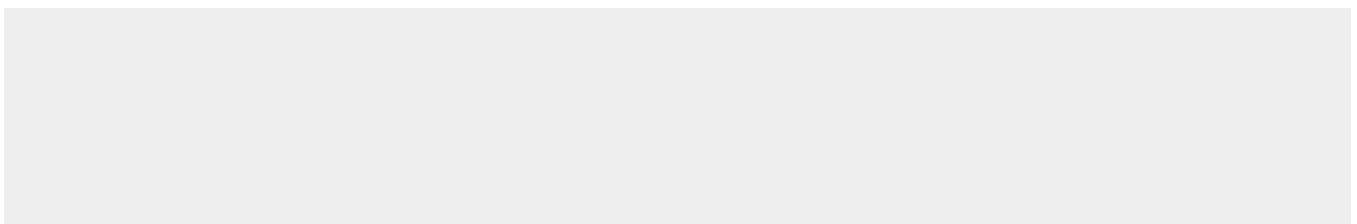
**Cellular Location**

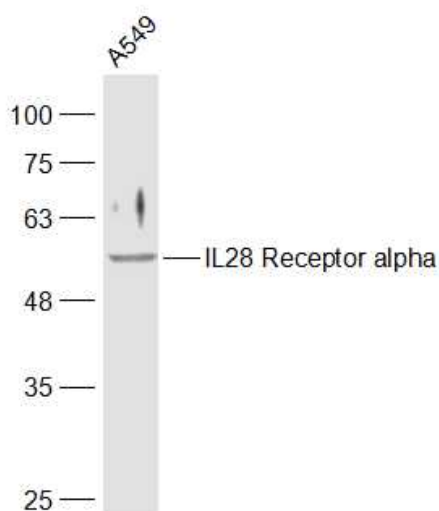
Membrane; Single-pass type I membrane protein

**IL28 Receptor alpha Rabbit pAb - Protocols**

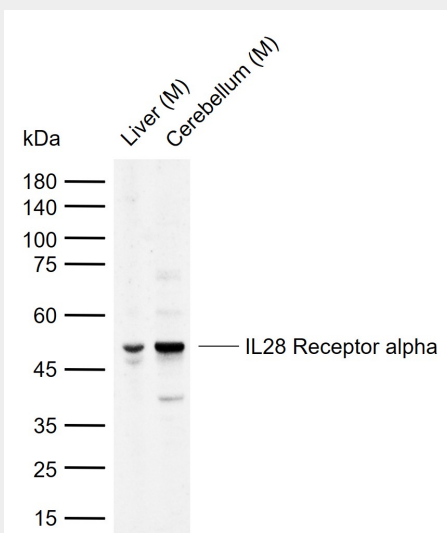
Provided below are standard protocols that you may find useful for product applications.

- [Western Blot](#)
- [Blocking Peptides](#)
- [Dot Blot](#)
- [Immunohistochemistry](#)
- [Immunofluorescence](#)
- [Immunoprecipitation](#)
- [Flow Cytometry](#)
- [Cell Culture](#)

**IL28 Receptor alpha Rabbit pAb - Images**



Sample: A549(Human) Cell Lysate at 30 ug Primary: Anti-IL28 Receptor alpha (AP94679) at 1/300 dilution Secondary: IRDye800CW Goat Anti-Rabbit IgG at 1/20000 dilution Predicted band size: 56 kD Observed band size: 56 kD



Sample: Lane 1: Mouse Liver tissue lysates Lane 2: Mouse Cerebellum tissue lysates Primary: Anti-IL28 Receptor alpha (AP94679) at 1/1000 dilution Secondary: IRDye800CW Goat Anti-Rabbit IgG at 1/20000 dilution Predicted band size: 56 kDa Observed band size: 50 kDa

### IL28 Receptor alpha Rabbit pAb - Background

This product as supplied is intended for research use only, not for use in human, therapeutic or diagnostic applications.