

PCNA Recombinant Rabbit mAb, Nuclear Loading Control
PCNA Recombinant Rabbit mAb, Nuclear Loading Control
Catalog # AP94695**Specification****PCNA Recombinant Rabbit mAb, Nuclear Loading Control - Product Information**

Application	WB, IHC-P, IHC-F, IF, ICC
Reactivity	Human
Host	Rabbit
Clonality	Recombinant

PCNA Recombinant Rabbit mAb, Nuclear Loading Control - Additional Information**Dilution**

WB~~1:1000<br \>IHC-P~~N/A<br \>IHC-F~~N/A<br \>IF~~1:50~200<br \>ICC~~N/A

Format

0.01M TBS(pH7.4), 0.09% (W/V) sodium azide and 50% Glyce

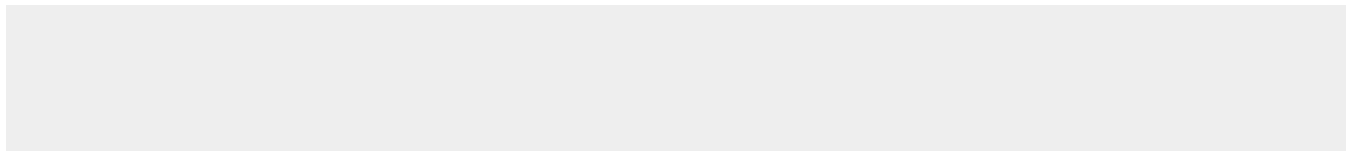
Storage

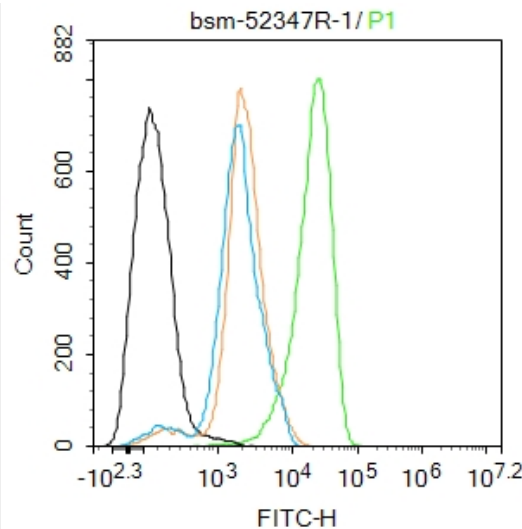
Store at -20 °C for one year. Avoid repeated freeze/thaw cycles. When reconstituted in sterile pH 7.4 0.01M PBS or diluent of antibody the antibody is stable for at least two weeks at 2-4 °C.

PCNA Recombinant Rabbit mAb, Nuclear Loading Control - Protein Information**PCNA Recombinant Rabbit mAb, Nuclear Loading Control - Protocols**

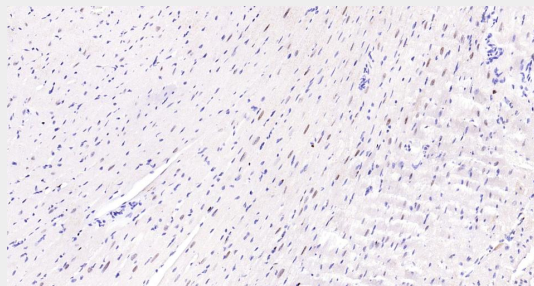
Provided below are standard protocols that you may find useful for product applications.

- [Western Blot](#)
- [Blocking Peptides](#)
- [Dot Blot](#)
- [Immunohistochemistry](#)
- [Immunofluorescence](#)
- [Immunoprecipitation](#)
- [Flow Cytometry](#)
- [Cell Culture](#)

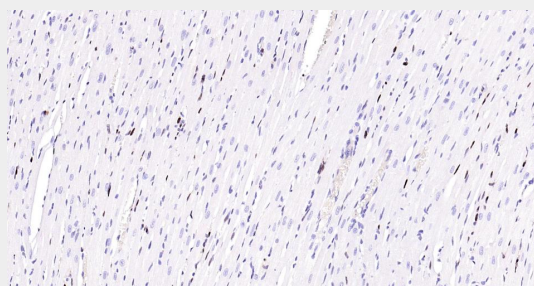
PCNA Recombinant Rabbit mAb, Nuclear Loading Control - Images



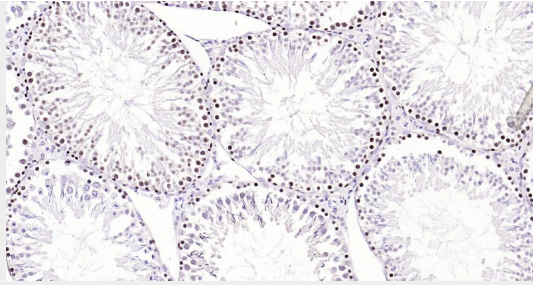
Blank control:Hela. Primary Antibody (green line): Rabbit Anti-PCNA antibody (AP94695) Dilution: 1ug/Test; Secondary Antibody : Goat anti-rabbit IgG-FITC Dilution: 0.5ug/Test. Protocol The cells were fixed with 4% PFA (10min at room temperature)and then permeabilized with 90% ice-cold methanol for 20 min at -20°C.The cells were then incubated in 5%BSA to block non-specific protein-protein interactions for 30 min at room temperature .Cells stained with Primary Antibody for 30 min at room temperature. The secondary antibody used for 40 min at room temperature. Acquisition of 20,000 events was performed.



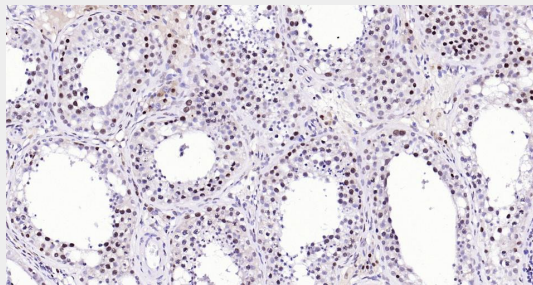
Paraformaldehyde-fixed, paraffin embedded Mouse Heart; Antigen retrieval by boiling in sodium citrate buffer (pH6.0) for 15 min; Antibody incubation with PCNA (Nuclear Loading Control) Monoclonal Antibody, Unconjugated(AP94695) at 1:200 overnight at 4°C, followed by conjugation to the SP Kit (Rabbit, SP-0023) and DAB (C-0010) staining.



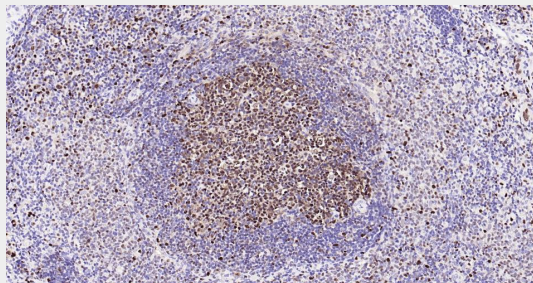
Paraformaldehyde-fixed, paraffin embedded Rat Heart; Antigen retrieval by boiling in sodium citrate buffer (pH6.0) for 15 min; Antibody incubation with PCNA (Nuclear Loading Control) Monoclonal Antibody, Unconjugated(AP94695) at 1:200 overnight at 4°C, followed by conjugation to the SP Kit (Rabbit, SP-0023) and DAB (C-0010) staining.



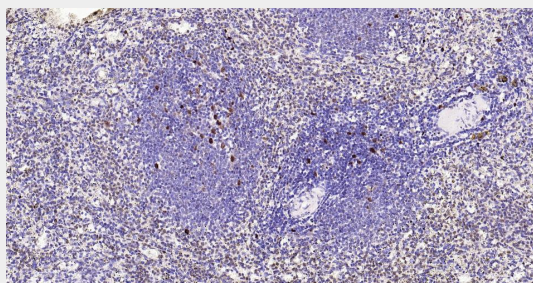
Paraformaldehyde-fixed, paraffin embedded Rat Testicles; Antigen retrieval by boiling in sodium citrate buffer (pH6.0) for 15 min; Antibody incubation with PCNA (Nuclear Loading Control) Monoclonal Antibody, Unconjugated(AP94695) at 1:200 overnight at 4°C, followed by conjugation to the SP Kit (Rabbit, SP-0023) and DAB (C-0010) staining.



Paraformaldehyde-fixed, paraffin embedded Human Testicles; Antigen retrieval by boiling in sodium citrate buffer (pH6.0) for 15 min; Antibody incubation with PCNA (Nuclear Loading Control) Monoclonal Antibody, Unconjugated(AP94695) at 1:200 overnight at 4°C, followed by conjugation to the SP Kit (Rabbit, SP-0023) and DAB (C-0010) staining.



Paraformaldehyde-fixed, paraffin embedded Rat Spleen; Antigen retrieval by boiling in sodium citrate buffer (pH6.0) for 15 min; Antibody incubation with PCNA (Nuclear Loading Control) Monoclonal Antibody, Unconjugated(AP94695) at 1:200 overnight at 4°C, followed by conjugation to the SP Kit (Rabbit, SP-0023) and DAB (C-0010) staining.



Paraformaldehyde-fixed, paraffin embedded Human Spleen; Antigen retrieval by boiling in sodium citrate buffer (pH6.0) for 15 min; Antibody incubation with PCNA (Nuclear Loading Control) Monoclonal Antibody, Unconjugated(AP94695) at 1:200 overnight at 4°C, followed by conjugation to the SP Kit (Rabbit, SP-0023) and DAB (C-0010) staining.

PCNA Recombinant Rabbit mAb, Nuclear Loading Control - Background

This product as supplied is intended for research use only, not for use in human, therapeutic or diagnostic applications.