

CHI3L1 Rabbit pAb
CHI3L1 Rabbit pAb
Catalog # AP94706**Specification**

CHI3L1 Rabbit pAb - Product Information

Application	WB, IHC-P, IHC-F, IF, ICC
Primary Accession	O9WTV1
Reactivity	Rat
Host	Rabbit
Clonality	Polyclonal
Calculated MW	42392

CHI3L1 Rabbit pAb - Additional Information**Gene ID** 89824**Other Names**

Chitinase-3-like protein 1, Cartilage glycoprotein 39, CGP-39, GP-39, Chi3l1

Dilution

WB~~1:1000<br \>IHC-P~~N/A<br \>IHC-F~~N/A<br \>IF~~1:50~200<br \>ICC~~N/A

Format

0.01M TBS(pH7.4), 0.09% (W/V) sodium azide and 50% Glyce

Storage

Store at -20 °C for one year. Avoid repeated freeze/thaw cycles. When reconstituted in sterile pH 7.4 0.01M PBS or diluent of antibody the antibody is stable for at least two weeks at 2-4 °C.

CHI3L1 Rabbit pAb - Protein Information**Name** Chi3l1**Function**

Carbohydrate-binding lectin with a preference for chitin. Has no chitinase activity. May play a role in tissue remodeling and in the capacity of cells to respond to and cope with changes in their environment. Plays a role in T-helper cell type 2 (Th2) inflammatory response and IL-13-induced inflammation, regulating allergen sensitization, inflammatory cell apoptosis, dendritic cell accumulation and M2 macrophage differentiation. Facilitates invasion of pathogenic enteric bacteria into colonic mucosa and lymphoid organs. Mediates activation of AKT1 signaling pathway and subsequent IL8 production in colonic epithelial cells. Regulates antibacterial responses in lung by contributing to macrophage bacterial killing, controlling bacterial dissemination and augmenting host tolerance. Also regulates hyperoxia- induced injury, inflammation and epithelial apoptosis in lung (By similarity).

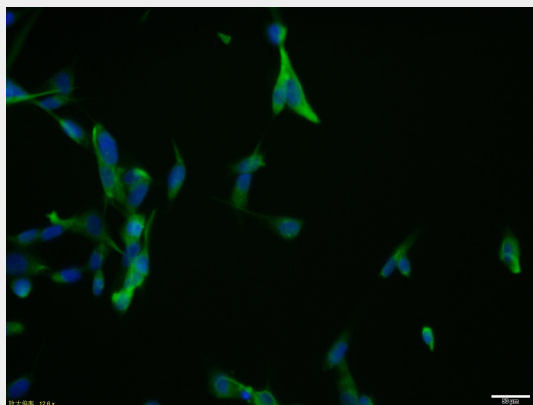
Cellular Location

Secreted, extracellular space. Cytoplasm. Cytoplasm, perinuclear region Endoplasmic reticulum

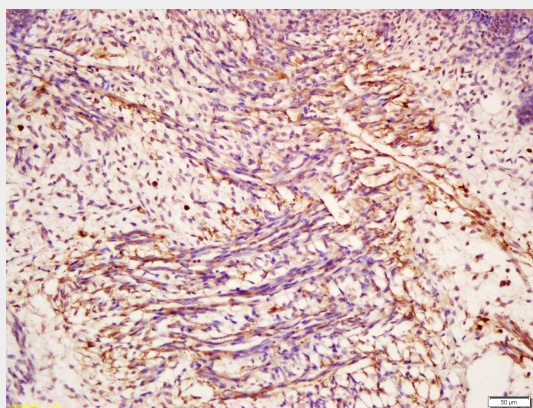
CHI3L1 Rabbit pAb - Protocols

Provided below are standard protocols that you may find useful for product applications.

- [Western Blot](#)
- [Blocking Peptides](#)
- [Dot Blot](#)
- [Immunohistochemistry](#)
- [Immunofluorescence](#)
- [Immunoprecipitation](#)
- [Flow Cytometry](#)
- [Cell Culture](#)

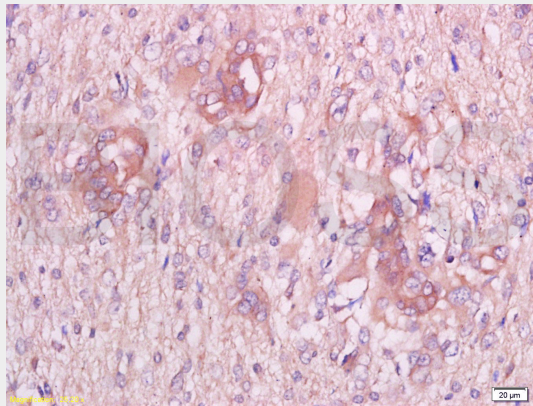
CHI3L1 Rabbit pAb - Images

U87MG cell; 4% Paraformaldehyde-fixed; Triton X-100 at room temperature for 20 min; Blocking buffer (normal goat serum, C-0005) at 37°C for 20 min; Antibody incubation with (CHI3L1) polyclonal Antibody, Unconjugated (AP94706) 1:100, 90 minutes at 37°C; followed by a conjugated Goat Anti-Rabbit IgG antibody at 37°C for 90 minutes, DAPI (blue, C02-04002) was used to stain the cell nuclei.

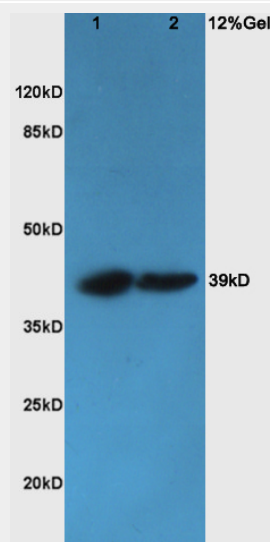


Tissue/cell: mouse embryo tissue; 4% Paraformaldehyde-fixed and paraffin-embedded; Antigen retrieval: citrate buffer (0.01M, pH 6.0), Boiling bathing for 15min; Block endogenous peroxidase by 3% Hydrogen peroxide for 30min; Blocking buffer (normal goat serum,C-0005) at 37°C for 20 min; Incubation: Anti-CGP-39/ CHI3L1/YKL-40 Polyclonal Antibody, Unconjugated(AP94706) 1:300,

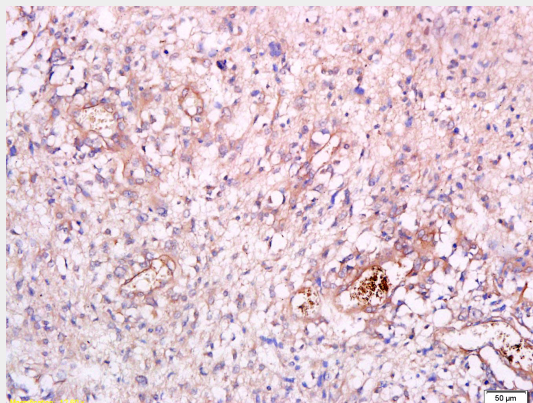
overnight at 4°C, followed by conjugation to the secondary antibody(SP-0023) and DAB(C-0010) staining



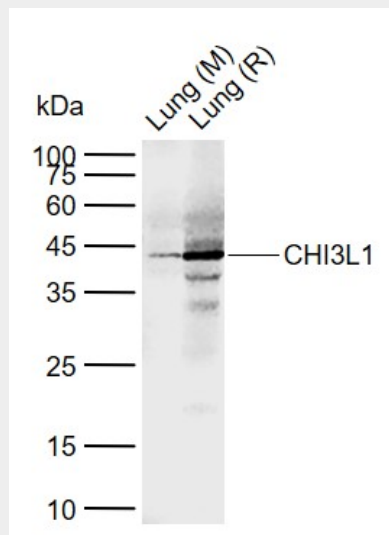
Tissue/cell: human endometrium carcinoma; 4% Paraformaldehyde-fixed and paraffin-embedded; Antigen retrieval: citrate buffer (0.01M, pH 6.0), Boiling bathing for 15min; Block endogenous peroxidase by 3% Hydrogen peroxide for 30min; Blocking buffer (normal goat serum,C-0005) at 37°C for 20 min; Incubation: Anti-CGP-39/YKL-40 Polyclonal Antibody, Unconjugated(AP94706) 1:300, overnight at 4°C, followed by conjugation to the secondary antibody(SP-0023) and DAB(C-0010) staining



Protein: Liver(Rat) lysate at 30ug; Colon carcinoma(Human) lysates at 30ug; Primary: Anti-CGP-39/CHI3L1/YKL-40 (AP94706) at 1:200; Secondary: HRP conjugated Goat Anti-Rabbit IgG(bs-0295G-HRP) at 1: 3000; Predicted band size : 42kD Observed band size : 39kD



Tissue/cell: human endometrium carcinoma; 4% Paraformaldehyde-fixed and paraffin-embedded; Antigen retrieval: citrate buffer (0.01M, pH 6.0), Boiling bathing for 15min; Block endogenous peroxidase by 3% Hydrogen peroxide for 30min; Blocking buffer (normal goat serum,C-0005) at 37°C for 20 min; Incubation: Anti-CGP-39/ CHI3L1/YKL-40 Polyclonal Antibody, Unconjugated(AP94706) 1:300, overnight at 4°C, followed by conjugation to the secondary antibody(SP-0023) and DAB(C-0010) staining



Sample: Lane 1: Mouse Lung tissue lysates Lane 2: Rat Lung tissue lysates Primary: Anti-CHI3L1 (AP94706) at 1/1000 dilution Secondary: IRDye800CW Goat Anti-Rabbit IgG at 1/20000 dilution Predicted band size: 42 kDa Observed band size: 42 kDa

CHI3L1 Rabbit pAb - Background

This product as supplied is intended for research use only, not for use in human, therapeutic or diagnostic applications.