

TREM1 Rabbit pAb
TREM1 Rabbit pAb
Catalog # AP94715**Specification**

TREM1 Rabbit pAb - Product Information

Application	WB, IHC-P
Primary Accession	O9JKE2
Reactivity	Mouse
Host	Rabbit
Clonality	Polyclonal
Calculated MW	25409

TREM1 Rabbit pAb - Additional Information**Gene ID** 58217**Other Names**

Triggering receptor expressed on myeloid cells 1, TREM-1, CD354, Trem1

Format

0.01M TBS(pH7.4), 0.09% (W/V) sodium azide and 50% Glyce

Storage

Store at -20 °C for one year. Avoid repeated freeze/thaw cycles. When reconstituted in sterile pH 7.4 0.01M PBS or diluent of antibody the antibody is stable for at least two weeks at 2-4 °C.

TREM1 Rabbit pAb - Protein Information**Name** Trem1**Function**

Cell surface receptor that plays important roles in innate and adaptive immunity by amplifying inflammatory responses. Upon activation by various ligands such as PGLYRP1, HMGB1 or HSP70, multimerizes and forms a complex with transmembrane adapter TYROBP/DAP12. In turn, initiates a SYK-mediated cascade of tyrosine phosphorylation, activating multiple downstream mediators such as BTK, MAPK1, MAPK3 or phospholipase C-gamma. This cascade promotes the neutrophil- and macrophage-mediated release of pro-inflammatory cytokines and/or chemokines, as well as their migration and thereby amplifies inflammatory responses that are triggered by bacterial and fungal infections (PubMed:23241959, PubMed:27328755). By also promoting the amplification of inflammatory signals that are initially triggered by Toll-like receptor (TLR) and NOD-like receptor engagement, plays a major role in the pathophysiology of acute and chronic inflammatory diseases of different etiologies including septic shock and atherosclerosis (By similarity).

Cellular Location

Cell membrane {ECO:0000250|UniProtKB:Q9NP99}; Single-pass type I membrane protein

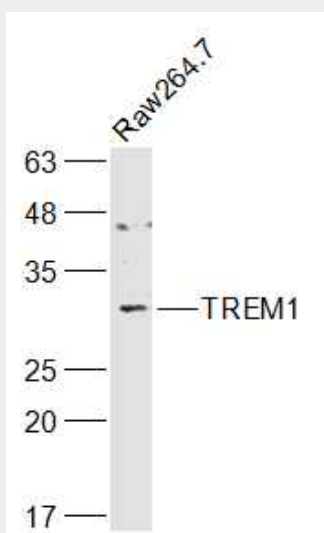
{ECO:0000250|UniProtKB:Q9NP99} Note=Recruited to lipid rafts when activated
{ECO:0000250|UniProtKB:Q9NP99}

TREM1 Rabbit pAb - Protocols

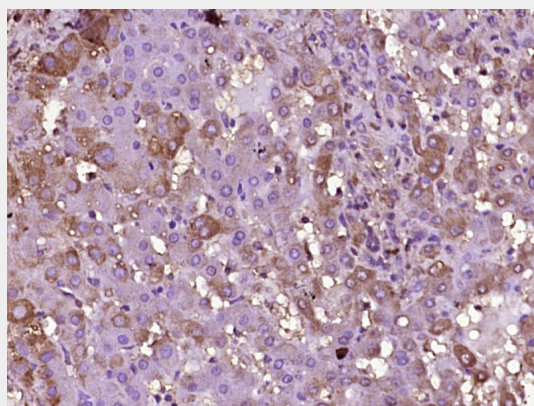
Provided below are standard protocols that you may find useful for product applications.

- [Western Blot](#)
- [Blocking Peptides](#)
- [Dot Blot](#)
- [Immunohistochemistry](#)
- [Immunofluorescence](#)
- [Immunoprecipitation](#)
- [Flow Cytometry](#)
- [Cell Culture](#)

TREM1 Rabbit pAb - Images



Sample: Raw264.7(Mouse) Cell Lysate at 30 ug Primary: Anti-TREM1 (AP94715) at 1/1000 dilution
Secondary: IRDye800CW Goat Anti-Rabbit IgG at 1/20000 dilution Predicted band size: 24 kD
Observed band size: 29 kD



Paraformaldehyde-fixed, paraffin embedded (Human liver); Antigen retrieval by boiling in sodium citrate buffer (pH6.0) for 15min; Block endogenous peroxidase by 3% hydrogen peroxide for 20

minutes; Blocking buffer (normal goat serum) at 37°C for 30min; Antibody incubation with (TREM1) Polyclonal Antibody, Unconjugated (AP94715) at 1:400 overnight at 4°C, followed by operating according to SP Kit(Rabbit) (sp-0023) instructions and DAB staining.

TREM1 Rabbit pAb - Background

This product as supplied is intended for research use only, not for use in human, therapeutic or diagnostic applications.