

ECE2 Rabbit pAb
ECE2 Rabbit pAb
Catalog # AP94716**Specification**

ECE2 Rabbit pAb - Product Information

Application	WB, IHC-P, IHC-F, IF
Primary Accession	P0DPD6
Reactivity	Human
Host	Rabbit
Clonality	Polyclonal
Calculated MW	91211

ECE2 Rabbit pAb - Additional Information**Gene ID** 110599583;9718**Other Names**

Endothelin-converting enzyme 2, ECE-2, 3.4.24.71, ECE2 (http://www.genenames.org/cgi-bin/gene_symbol_report?hgnc_id=13275)
HGNC:13275

Dilution

WB ~ 1:1000
IHC-P ~ N/A
IHC-F ~ N/A
IF ~ 1:50 ~ 200

Format

0.01M TBS(pH7.4), 0.09% (W/V) sodium azide and 50% Glycerol

Storage

Store at -20 °C for one year. Avoid repeated freeze/thaw cycles. When reconstituted in sterile pH 7.4 0.01M PBS or diluent of antibody the antibody is stable for at least two weeks at 2-4 °C.

ECE2 Rabbit pAb - Protein Information**Name** ECE2 ([HGNC:13275](#))**Function**

Converts big endothelin-1 to endothelin-1. Also involved in the processing of various neuroendocrine peptides, including neurotensin, angiotensin I, substance P, proenkephalin-derived peptides, and prodynorphin-derived peptides. May play a role in amyloid-beta processing (By similarity).

Cellular Location

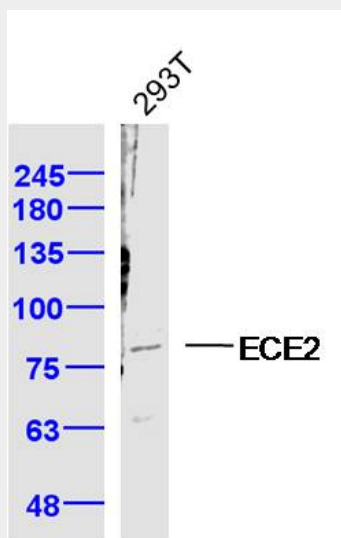
Golgi apparatus membrane {ECO:0000250|UniProtKB:F1N476}; Single-pass type II membrane protein. Cytoplasmic vesicle, secretory vesicle membrane {ECO:0000250|UniProtKB:F1N476}

ECE2 Rabbit pAb - Protocols

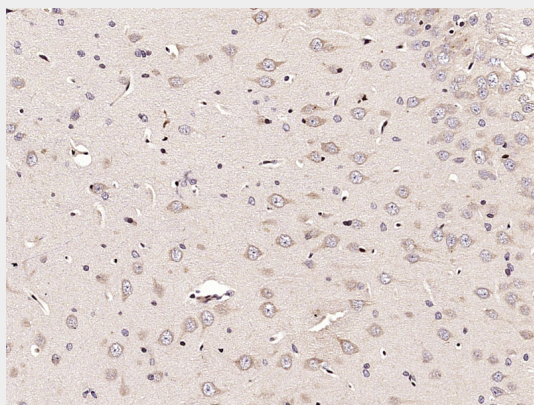
Provided below are standard protocols that you may find useful for product applications.

- [Western Blot](#)
- [Blocking Peptides](#)
- [Dot Blot](#)
- [Immunohistochemistry](#)
- [Immunofluorescence](#)
- [Immunoprecipitation](#)
- [Flow Cytometry](#)
- [Cell Culture](#)

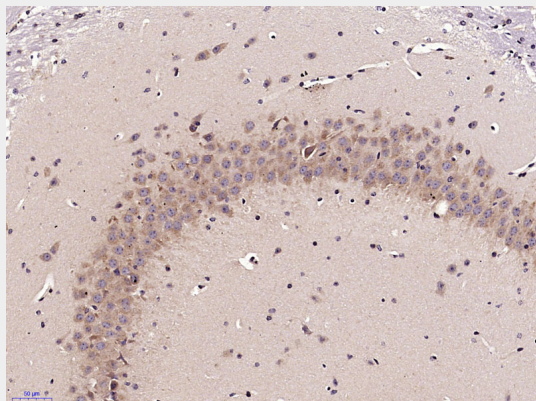
ECE2 Rabbit pAb - Images



Sample: 293T Cell (Human) Lysate at 40 ug Primary: Anti-ECE2 (AP94716) at 1/300 dilution
Secondary: IRDye800CW Goat Anti-Rabbit IgG at 1/20000 dilution Predicted band size: 80-100 kD
Observed band size: 80 kD



Paraformaldehyde-fixed, paraffin embedded (Rat brain); Antigen retrieval by microwave in sodium citrate buffer (pH6.0) ; Block endogenous peroxidase by 3% hydrogen peroxide for 30 minutes; Blocking buffer (3% BSA) at RT for 30min; Antibody incubation with (ECE2) Polyclonal Antibody, Unconjugated (AP94716) at 1:400 overnight at 4°C, followed by conjugation to the secondary antibody (labeled with HRP) and DAB staining.



Paraformaldehyde-fixed, paraffin embedded (Mouse brain); Antigen retrieval by microwave in sodium citrate buffer (pH6.0) ; Block endogenous peroxidase by 3% hydrogen peroxide for 30 minutes; Blocking buffer (3% BSA) at RT for 30min; Antibody incubation with (ECE2) Polyclonal Antibody, Unconjugated (AP94716) at 1:400 overnight at 4°C, followed by conjugation to the secondary antibody (labeled with HRP) and DAB staining.

ECE2 Rabbit pAb - Background

This product as supplied is intended for research use only, not for use in human, therapeutic or diagnostic applications.