

**IL26 Antibody (Center)**  
**Affinity Purified Rabbit Polyclonal Antibody (Pab)**  
**Catalog # AP9472C****Specification**

---

**IL26 Antibody (Center) - Product Information**

Application	WB,E
Primary Accession	<a href="#">Q9NPH9</a>
Reactivity	Human
Host	Rabbit
Clonality	Polyclonal
Isotype	Rabbit IgG
Antigen Region	88-115

**IL26 Antibody (Center) - Additional Information****Gene ID** 55801**Other Names**

Interleukin-26, IL-26, Protein AK155, IL26, AK155

**Target/Specificity**

This IL26 antibody is generated from rabbits immunized with a KLH conjugated synthetic peptide between 88-115 amino acids from the Central region of human IL26.

**Dilution**

WB~~1:1000

E~~Use at an assay dependent concentration.

**Format**

Purified polyclonal antibody supplied in PBS with 0.09% (W/V) sodium azide. This antibody is purified through a protein A column, followed by peptide affinity purification.

**Storage**

Maintain refrigerated at 2-8°C for up to 2 weeks. For long term storage store at -20°C in small aliquots to prevent freeze-thaw cycles.

**Precautions**

IL26 Antibody (Center) is for research use only and not for use in diagnostic or therapeutic procedures.

**IL26 Antibody (Center) - Protein Information****Name** IL26**Synonyms** AK155**Function** May play a role in local mechanisms of mucosal immunity and seems to have a

pro-inflammatory function. May play a role in inflammatory bowel disease. Activates STAT1 and STAT3, MAPK1/3 (ERK1/2), JUN and AKT. Induces expression of SOCS3, TNF-alpha and IL-8, secretion of IL-8 and IL-10 and surface expression of ICAM1. Decreases proliferation of intestinal epithelial cells. Is inhibited by heparin.

#### **Cellular Location**

Secreted.

#### **Tissue Location**

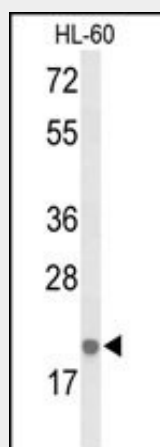
Expressed in HVS transformed T-cells but not other T-cell lines or primary stimulated T-cells. Expressed in colonic T- cells including Th17 inflammatory T-cells; the expression is significantly increased in serum of patients with Crohn's disease (at protein level).

### **IL26 Antibody (Center) - Protocols**

Provided below are standard protocols that you may find useful for product applications.

- [Western Blot](#)
- [Blocking Peptides](#)
- [Dot Blot](#)
- [Immunohistochemistry](#)
- [Immunofluorescence](#)
- [Immunoprecipitation](#)
- [Flow Cytometry](#)
- [Cell Culture](#)

### **IL26 Antibody (Center) - Images**



Western blot analysis of IL26 Antibody (Center) (Cat. #AP9472c) in HL-60 cell line lysates (35ug/lane). IL26 (arrow) was detected using the purified Pab.

### **IL26 Antibody (Center) - Background**

IL26 is a member of the IL10 family of cytokines. It is a secreted protein and may function as a homodimer. This protein is thought to contribute to the transformed phenotype of T cells after infection by herpesvirus samimiri.

### **IL26 Antibody (Center) - References**

?Siezen, C.L., et al. Pediatr. Infect. Dis. J. 28(4):333-335(2009)

?Silverberg, M.S., et al. Nat. Genet. 41(2):216-220(2009)  
?Kantarci, O.H., et al. Arch. Neurol. 65(3):349-357(2008)  
?Hor, S., et al. J. Biol. Chem. 279(32):33343-33351(2004)