

**Regucalcin Rabbit pAb**  
**Regucalcin Rabbit pAb**  
**Catalog # AP94749****Specification**

---

**Regucalcin Rabbit pAb - Product Information**

Application	IHC-P, WB
Primary Accession	<a href="#">Q5JRR5</a>
Reactivity	Human
Host	Rabbit
Clonality	Polyclonal

**Regucalcin Rabbit pAb - Additional Information****Format**

0.01M TBS(pH7.4), 0.09% (W/V) sodium azide and 50% Glyce

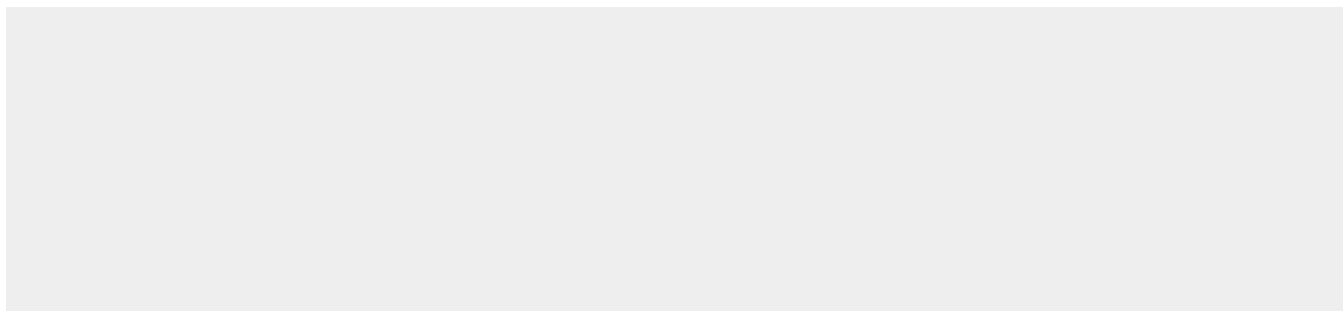
**Storage**

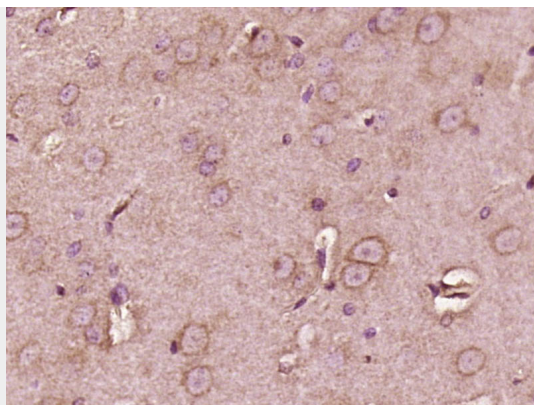
Store at -20 °C for one year. Avoid repeated freeze/thaw cycles. When reconstituted in sterile pH 7.4 0.01M PBS or diluent of antibody the antibody is stable for at least two weeks at 2-4 °C.

**Regucalcin Rabbit pAb - Protein Information****Regucalcin Rabbit pAb - Protocols**

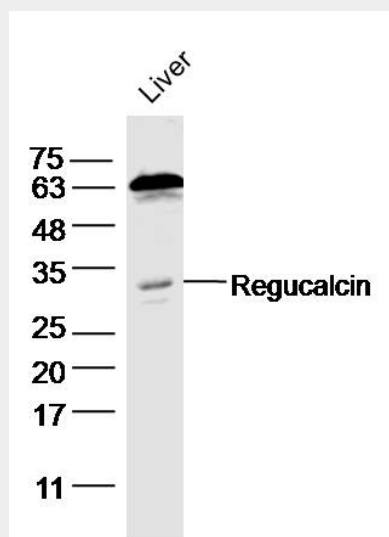
Provided below are standard protocols that you may find useful for product applications.

- [Western Blot](#)
- [Blocking Peptides](#)
- [Dot Blot](#)
- [Immunohistochemistry](#)
- [Immunofluorescence](#)
- [Immunoprecipitation](#)
- [Flow Cytometry](#)
- [Cell Culture](#)

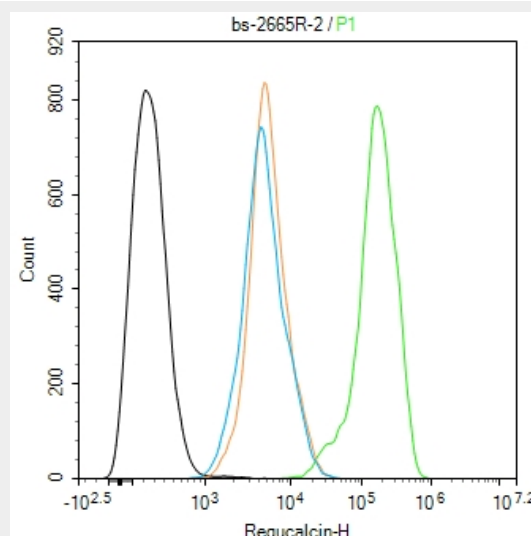
**Regucalcin Rabbit pAb - Images**



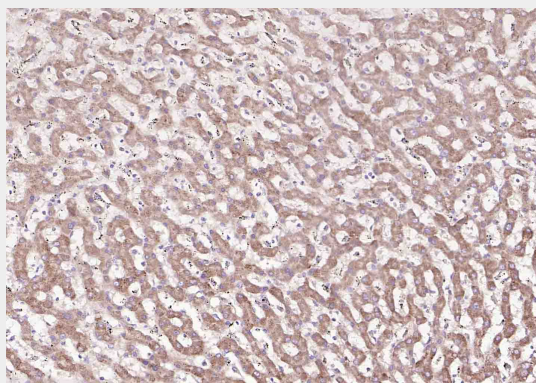
Paraformaldehyde-fixed, paraffin embedded (Rat brain); Antigen retrieval by boiling in sodium citrate buffer (pH6.0) for 15min; Block endogenous peroxidase by 3% hydrogen peroxide for 20 minutes; Blocking buffer (normal goat serum) at 37°C for 30min; Antibody incubation with (Regucalcin) Polyclonal Antibody, Unconjugated (AP94749) at 1:400 overnight at 4°C, followed by operating according to SP Kit(Rabbit) (sp-0023) instructions and DAB staining.



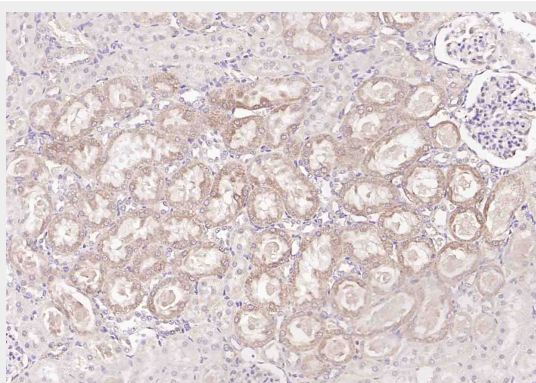
Sample: Liver (Mouse) Lysate at 40 ug Primary: Anti-Regucalcin (AP94749) at 1/300 dilution  
Secondary: IRDye800CW Goat Anti-Rabbit IgG at 1/20000 dilution Predicted band size: 33 kD  
Observed band size: 33 kD



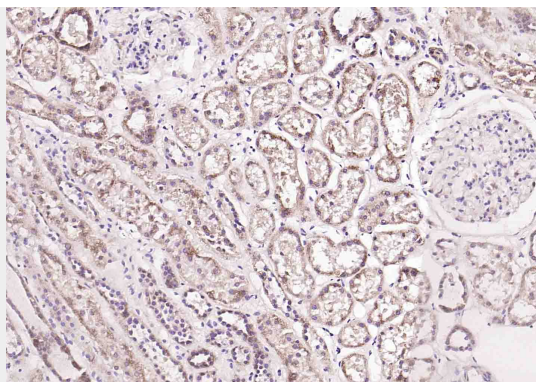
Blank control—black line—:HepG2. Primary Antibody (green line): Rabbit Anti-Regucalcin antibody (AP94749) Dilution:2ug/Test; Secondary Antibody—white blue line—: Goat anti-rabbit IgG-AF488 Dilution: 0.5ug/Test. Isotype control—orange line—: Normal Rabbit IgG Protocol The cells were fixed with 4% PFA (10min at room temperature)and then permeabilized with 90% ice-cold methanol for 20 min at -20°C, The cells were then incubated in 5%BSA to block non-specific protein-protein interactions for 30 min at room temperature .Cells stained with Primary Antibody for 30 min at room temperature. The secondary antibody used for 40 min at room temperature. Acquisition of 20,000 events was performed.



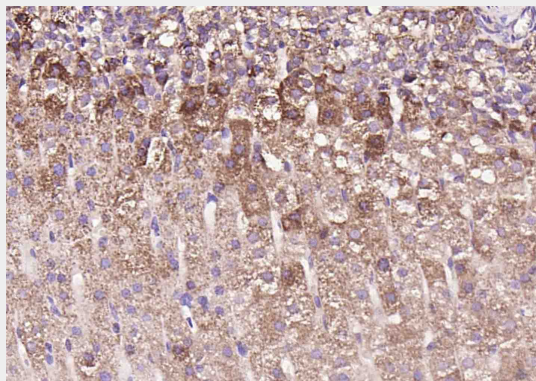
Paraformaldehyde-fixed, paraffin embedded (human liver); Antigen retrieval by boiling in sodium citrate buffer (pH6.0) for 15min; Block endogenous peroxidase by 3% hydrogen peroxide for 20 minutes; Blocking buffer (normal goat serum) at 37°C for 30min; Incubation with (Regucalcin) Polyclonal Antibody, Unconjugated (AP94749) at 1:200 overnight at 4°C, followed by operating according to SP Kit(Rabbit) (sp-0023) instructionsand DAB staining.



Paraformaldehyde-fixed, paraffin embedded (rat kidney); Antigen retrieval by boiling in sodium citrate buffer (pH6.0) for 15min; Block endogenous peroxidase by 3% hydrogen peroxide for 20 minutes; Blocking buffer (normal goat serum) at 37°C for 30min; Incubation with (Regucalcin) Polyclonal Antibody, Unconjugated (AP94749) at 1:200 overnight at 4°C, followed by operating according to SP Kit(Rabbit) (sp-0023) instructionsand DAB staining.



Paraformaldehyde-fixed, paraffin embedded (human kidney); Antigen retrieval by boiling in sodium citrate buffer (pH6.0) for 15min; Block endogenous peroxidase by 3% hydrogen peroxide for 20 minutes; Blocking buffer (normal goat serum) at 37°C for 30min; Incubation with (Regucalcin) Polyclonal Antibody, Unconjugated (AP94749) at 1:200 overnight at 4°C, followed by operating according to SP Kit(Rabbit) (sp-0023) instructions and DAB staining.



Paraformaldehyde-fixed, paraffin embedded (rat adrenal gland); Antigen retrieval by boiling in sodium citrate buffer (pH6.0) for 15min; Block endogenous peroxidase by 3% hydrogen peroxide for 20 minutes; Blocking buffer (normal goat serum) at 37°C for 30min; Incubation with (Regucalcin) Polyclonal Antibody, Unconjugated (AP94749) at 1:200 overnight at 4°C, followed by operating according to SP Kit(Rabbit) (sp-0023) instructions and DAB staining.

#### **Regucalcin Rabbit pAb - Background**

This product as supplied is intended for research use only, not for use in human, therapeutic or diagnostic applications.