

EAAT2 Rabbit pAb
EAAT2 Rabbit pAb
Catalog # AP94765**Specification****EAAT2 Rabbit pAb - Product Information**

Application	WB, IHC-P, IHC-F, IF
Primary Accession	P43006
Reactivity	Mouse
Host	Rabbit
Clonality	Polyclonal
Calculated MW	62030

EAAT2 Rabbit pAb - Additional Information**Gene ID** 20511**Other Names**

Excitatory amino acid transporter 2, GLT-1, Sodium-dependent glutamate/aspartate transporter 2, Solute carrier family 1 member 2, Slc1a2, Eaat2, Glt1

Dilution

WB~~1:1000<br \>IHC-P~~N/A<br \>IHC-F~~N/A<br \>IF~~1:50~200

Format

0.01M TBS(pH7.4), 0.09% (W/V) sodium azide and 50% Glyce

Storage

Store at -20 °C for one year. Avoid repeated freeze/thaw cycles. When reconstituted in sterile pH 7.4 0.01M PBS or diluent of antibody the antibody is stable for at least two weeks at 2-4 °C.

EAAT2 Rabbit pAb - Protein Information**Name** Slc1a2**Synonyms** Eaat2, Glt1**Function**

Sodium-dependent, high-affinity amino acid transporter that mediates the uptake of L-glutamate and also L-aspartate and D-aspartate (PubMed:7557442, PubMed:7698742, PubMed:9373176). Functions as a symporter that transports one amino acid molecule together with two or three Na(+) ions and one proton, in parallel with the counter-transport of one K(+) ion. Mediates Cl(-) flux that is not coupled to amino acid transport; this avoids the accumulation of negative charges due to aspartate and

Na(+) symport (By similarity). Essential for the rapid removal of released glutamate from the synaptic cleft, and for terminating the postsynaptic action of glutamate (PubMed:9180080).

Cellular Location

Cell membrane; Multi-pass membrane protein {ECO:0000250|UniProtKB:P43004}

Tissue Location

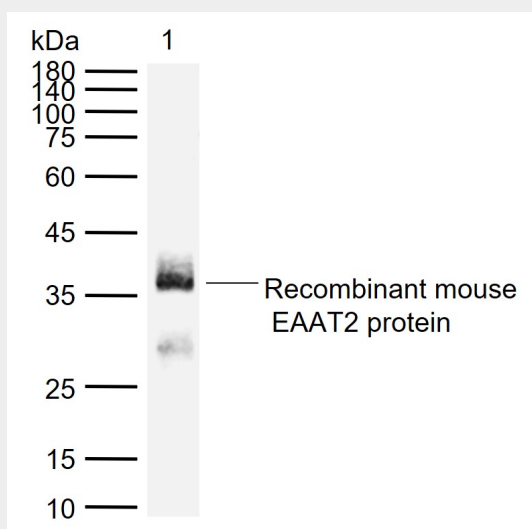
Detected in brain (PubMed:9180080). Detected in embryonic forebrain, especially in globus pallidus, perirhinal cortex, lateral hypothalamus, hippocampus, and on fimbria and axonal pathways connecting the neocortex, basal ganglia and thalamus (at protein level) (PubMed:16880397). Isoform GLT1 is expressed in the brain (PubMed:7557442, PubMed:7698742, PubMed:9180080, PubMed:9373176) Isoforms GLT-1A and GLT-1B are expressed in the liver (PubMed:9373176)

EAAT2 Rabbit pAb - Protocols

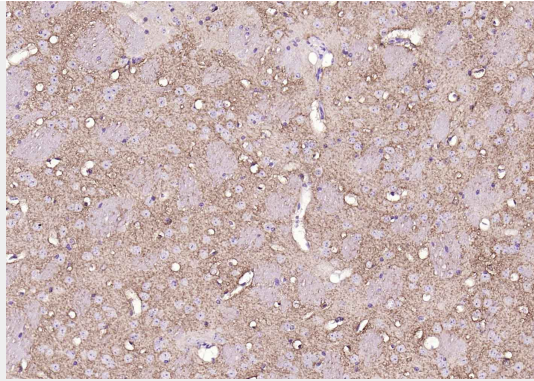
Provided below are standard protocols that you may find useful for product applications.

- [Western Blot](#)
- [Blocking Peptides](#)
- [Dot Blot](#)
- [Immunohistochemistry](#)
- [Immunofluorescence](#)
- [Immunoprecipitation](#)
- [Flow Cytometry](#)
- [Cell Culture](#)

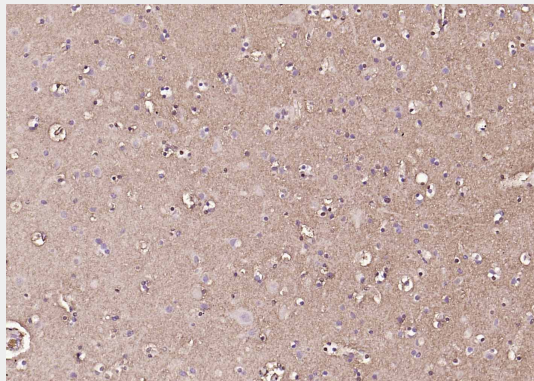
EAAT2 Rabbit pAb - Images



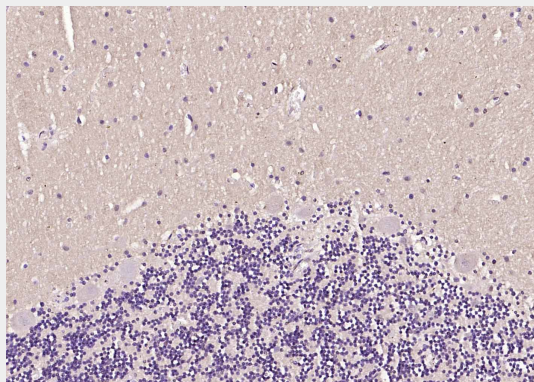
Sample: Lane 1: Recombinant mouse EAAT2 protein, GST & His Primary: Anti-EAAT2 (AP94765) at 1/500 dilution Secondary: IRDye800CW Goat Anti-Rabbit IgG at 1/20000 dilution Predicted band size: 62 kDa Observed band size: 36 kDa



Paraformaldehyde-fixed, paraffin embedded (mouse brain); Antigen retrieval by boiling in sodium citrate buffer (pH6.0) for 15min; Block endogenous peroxidase by 3% hydrogen peroxide for 20 minutes; Blocking buffer (normal goat serum) at 37°C for 30min; Incubation with (EAAT2) Polyclonal Antibody, Unconjugated (AP94765) at 1:200 overnight at 4°C, followed by operating according to SP Kit(Rabbit) (sp-0023) instructions and DAB staining.



Paraformaldehyde-fixed, paraffin embedded (human brain); Antigen retrieval by boiling in sodium citrate buffer (pH6.0) for 15min; Block endogenous peroxidase by 3% hydrogen peroxide for 20 minutes; Blocking buffer (normal goat serum) at 37°C for 30min; Incubation with (EAAT2) Polyclonal Antibody, Unconjugated (AP94765) at 1:200 overnight at 4°C, followed by operating according to SP Kit(Rabbit) (sp-0023) instructions and DAB staining.



Paraformaldehyde-fixed, paraffin embedded (human cerebellum); Antigen retrieval by boiling in sodium citrate buffer (pH6.0) for 15min; Block endogenous peroxidase by 3% hydrogen peroxide for 20 minutes; Blocking buffer (normal goat serum) at 37°C for 30min; Incubation with (EAAT2) Polyclonal Antibody, Unconjugated (AP94765) at 1:200 overnight at 4°C, followed by operating according to SP Kit(Rabbit) (sp-0023) instructions and DAB staining.

EAAT2 Rabbit pAb - Background

This product as supplied is intended for research use only, not for use in human, therapeutic or diagnostic applications.