

BTBD10 Antibody (Center)
Affinity Purified Rabbit Polyclonal Antibody (Pab)
Catalog # AP9476c**Specification**

BTBD10 Antibody (Center) - Product Information

Application	WB,E
Primary Accession	Q9BSF8
Other Accession	Q80X66
Reactivity	Human
Predicted	Mouse
Host	Rabbit
Clonality	Polyclonal
Isotype	Rabbit IgG
Antigen Region	191-218

BTBD10 Antibody (Center) - Additional Information**Gene ID** 84280**Other Names**BTB/POZ domain-containing protein 10, Glucose metabolism-related protein 1, BTBD10, GMRP1
{ECO:0000303|PubMed:21267538}**Target/Specificity**

This BTBD10 antibody is generated from rabbits immunized with a KLH conjugated synthetic peptide between 191-218 amino acids from the Central region of human BTBD10.

Dilution

WB~~1:1000

Format

Purified polyclonal antibody supplied in PBS with 0.09% (W/V) sodium azide. This antibody is purified through a protein A column, followed by peptide affinity purification.

Storage

Maintain refrigerated at 2-8°C for up to 2 weeks. For long term storage store at -20°C in small aliquots to prevent freeze-thaw cycles.

Precautions

BTBD10 Antibody (Center) is for research use only and not for use in diagnostic or therapeutic procedures.

BTBD10 Antibody (Center) - Protein Information**Name** BTBD10**Synonyms** GMRP1 {ECO:0000303|PubMed:21267538}

Function Plays a major role as an activator of AKT family members by inhibiting PPP2CA-mediated dephosphorylation, thereby keeping AKTs activated. Plays a role in preventing motor neuronal death and accelerating the growth of pancreatic beta cells.

Cellular Location

Nucleus. Cytoplasm {ECO:0000250|UniProtKB:Q80X66}. Note=Colocalizes with KCTD20 in filamentous structures. {ECO:0000250|UniProtKB:Q80X66}

Tissue Location

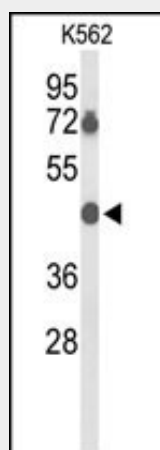
Ubiquitously expressed. Highly expressed in adult brain, testis, aorta and small intestine and weakly expressed in the heart, lung, liver, kidney, pancreas, spleen, thymus, prostate, ovary and colon. Down-regulated in glioma.

BTBD10 Antibody (Center) - Protocols

Provided below are standard protocols that you may find useful for product applications.

- [Western Blot](#)
- [Blocking Peptides](#)
- [Dot Blot](#)
- [Immunohistochemistry](#)
- [Immunofluorescence](#)
- [Immunoprecipitation](#)
- [Flow Cytometry](#)
- [Cell Culture](#)

BTBD10 Antibody (Center) - Images



Western blot analysis of BTBD10 Antibody (Center) (Cat. #AP9476c) in K562 cell line lysates (35ug/lane). BTBD10 (arrow) was detected using the purified Pab.

BTBD10 Antibody (Center) - Background

BTBD10 appears to behave as a suppressor of cell death, which includes neuronal cell death related to amyotrophic lateral sclerosis. It may also act as an enhancer of cell growth via its positive regulation of Akt phosphorylation.

BTBD10 Antibody (Center) - References

?Nawa, M., et al. Cell. Signal. 20(3):493-505(2008)

?Chen, J., et al. Gene 340(1):61-69(2004)