

**APPL1 Recombinant Rabbit mAb**  
**APPL1 Recombinant Rabbit mAb**  
**Catalog # AP94818****Specification**

---

**APPL1 Recombinant Rabbit mAb - Product Information**

Application	<b>WB, IHC-P</b>
Host	<b>Rabbit</b>
Clonality	<b>Recombinant</b>

**APPL1 Recombinant Rabbit mAb - Additional Information****Format**

0.01M TBS(pH7.4), 0.09% (W/V) sodium azide and 50% Glyce

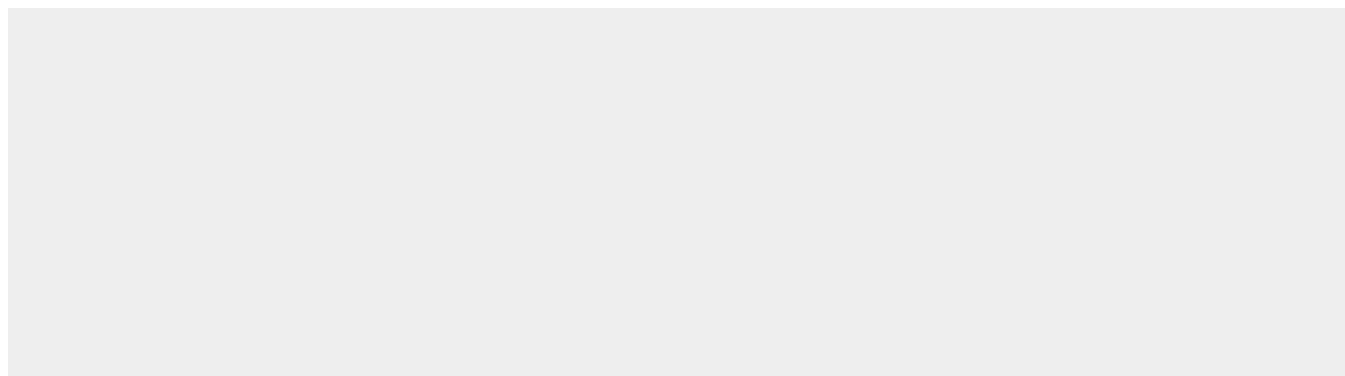
**Storage**

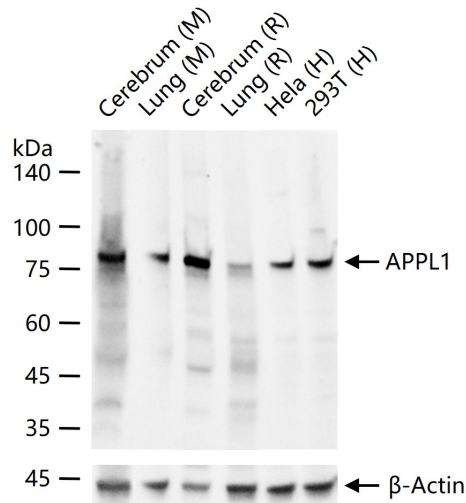
Store at -20 °C for one year. Avoid repeated freeze/thaw cycles. When reconstituted in sterile pH 7.4 0.01M PBS or diluent of antibody the antibody is stable for at least two weeks at 2-4 °C.

**APPL1 Recombinant Rabbit mAb - Protein Information****APPL1 Recombinant Rabbit mAb - Protocols**

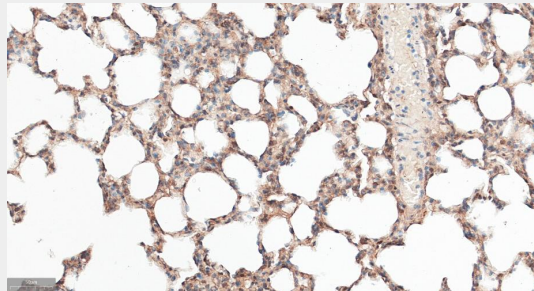
Provided below are standard protocols that you may find useful for product applications.

- [Western Blot](#)
- [Blocking Peptides](#)
- [Dot Blot](#)
- [Immunohistochemistry](#)
- [Immunofluorescence](#)
- [Immunoprecipitation](#)
- [Flow Cytometry](#)
- [Cell Culture](#)

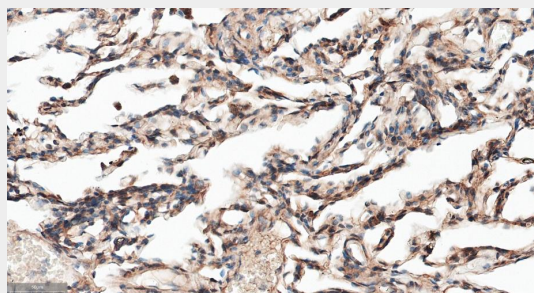
**APPL1 Recombinant Rabbit mAb - Images**



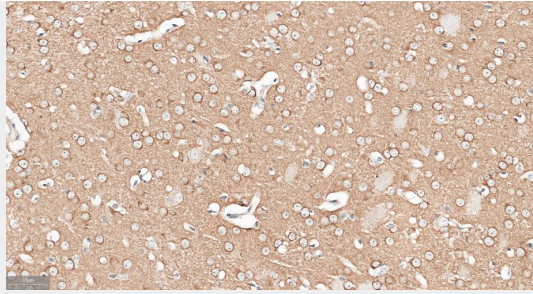
25 ug total protein per lane of various lysates (see on figure) probed with APPL1 monoclonal antibody, unconjugated (AP94818) at 1:1000 dilution and 4°C overnight incubation. Followed by conjugated secondary antibody incubation at r.t. for 60 min.



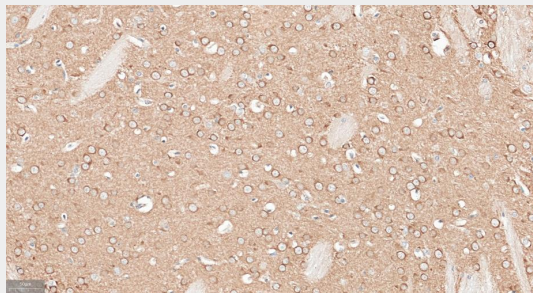
Paraformaldehyde-fixed, paraffin embedded Mouse Lung; Antigen retrieval by boiling in sodium citrate buffer (pH6.0) for 15 min; Antibody incubation with APPL1 Monoclonal Antibody, Unconjugated (AP94818) at 1:250 overnight at 4°C, followed by conjugation to the SP Kit (Rabbit, SP-0023) and DAB (C-0010) staining.



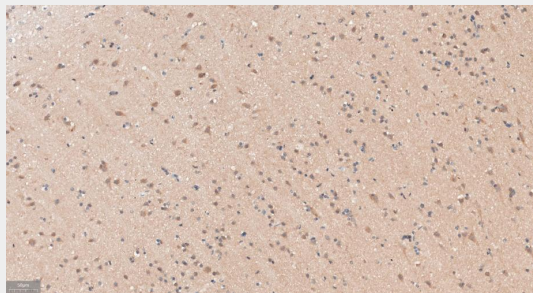
Paraformaldehyde-fixed, paraffin embedded Human Lung; Antigen retrieval by boiling in sodium citrate buffer (pH6.0) for 15 min; Antibody incubation with APPL1 Monoclonal Antibody, Unconjugated (AP94818) at 1:250 overnight at 4°C, followed by conjugation to the SP Kit (Rabbit, SP-0023) and DAB (C-0010) staining.



Paraformaldehyde-fixed, paraffin embedded Mouse Cerebrum; Antigen retrieval by boiling in sodium citrate buffer (pH6.0) for 15 min; Antibody incubation with APPL1 Monoclonal Antibody, Unconjugated(AP94818) at 1:250 overnight at 4°C, followed by conjugation to the SP Kit (Rabbit, SP-0023) and DAB (C-0010) staining.



Paraformaldehyde-fixed, paraffin embedded Rat Cerebrum; Antigen retrieval by boiling in sodium citrate buffer (pH6.0) for 15 min; Antibody incubation with APPL1 Monoclonal Antibody, Unconjugated(AP94818) at 1:250 overnight at 4°C, followed by conjugation to the SP Kit (Rabbit, SP-0023) and DAB (C-0010) staining.



Paraformaldehyde-fixed, paraffin embedded Human Cerebrum; Antigen retrieval by boiling in sodium citrate buffer (pH6.0) for 15 min; Antibody incubation with APPL1 Monoclonal Antibody, Unconjugated(AP94818) at 1:250 overnight at 4°C, followed by conjugation to the SP Kit (Rabbit, SP-0023) and DAB (C-0010) staining.

#### **APPL1 Recombinant Rabbit mAb - Background**

This product as supplied is intended for research use only, not for use in human, therapeutic or diagnostic applications.