

AIF1/Iba1 Rabbit pAb
AIF1/Iba1 Rabbit pAb
Catalog # AP94829**Specification**

AIF1/Iba1 Rabbit pAb - Product Information

Application	WB, IHC-P, IHC-F, E
Primary Accession	O70200
Reactivity	Rat, Human, Mouse
Host	Rabbit
Clonality	Polyclonal
Calculated MW	16 KDa
Physical State	Liquid
Immunogen	KLH conjugated synthetic peptide derived from human Iba1
Epitope Specificity	51-147/147
Isotype	IgG
Purity	
affinity purified by Protein A	
Buffer	0.01M TBS (pH7.4) with 1% BSA, 0.02% Proclin300 and 50% Glycerol.
SUBCELLULAR LOCATION	Cytoplasm, cytoskeleton. Cell projection, ruffle membrane; Peripheral membrane protein; Cytoplasmic side. Note=Associated with the actin cytoskeleton at membrane ruffles and at sites of phagocytosis.
SIMILARITY	Contains 2 EF-hand domains.
SUBUNIT	Homodimer (Potential). Monomer. Interacts with LCP1.
Important Note	This product as supplied is intended for research use only, not for use in human, therapeutic or diagnostic applications.

Background Descriptions

Allograft Inflammatory Factor-1 (AIF1) or ionized calcium-binding adaptor molecule 1 (Iba1) is expressed selectively in microglia/macrophages and is a Ca²⁺-binding peptide produced by activated monocytes and microglial cells. It has been suggested that AIF1 expression is associated with chronic inflammatory processes. AIF1 is expressed by activated monocytes and might participate in a variety of pathogenic processes in the mammalian brain and in chronic transplant rejection. It has been shown to be expressed early and persistently in chronically rejecting cardiac allografts but not in cardiac syngrafts and host hearts.

AIF1/Iba1 Rabbit pAb - Additional Information**Gene ID** 11629**Other Names**

Allograft inflammatory factor 1, AIF-1, Ionized calcium-binding adapter molecule 1, Aif1, Iba1

Target/Specificity

Detected in T-lymphocytes and peripheral blood mononuclear cells.

Dilution

WB~~1:1000<br \>IHC-P~~N/A<br \>IHC-F~~N/A<br \>E~~N/A

Format

0.01M TBS(pH7.4), 0.09% (W/V) sodium azide and 50% Glyce

Storage

Store at -20 °C for one year. Avoid repeated freeze/thaw cycles. When reconstituted in sterile pH 7.4 0.01M PBS or diluent of antibody the antibody is stable for at least two weeks at 2-4 °C.

AIF1/Iba1 Rabbit pAb - Protein Information

Name Aif1

Synonyms Iba1

Function

Actin-binding protein that enhances membrane ruffling and RAC activation. Enhances the actin-bundling activity of LCP1. Binds calcium. Plays a role in RAC signaling and in phagocytosis. May play a role in macrophage activation and function. Promotes the proliferation of vascular smooth muscle cells and of T-lymphocytes. Enhances lymphocyte migration. Plays a role in vascular inflammation.

Cellular Location

Cytoplasm, cytoskeleton. Cell projection, ruffle membrane; Peripheral membrane protein; Cytoplasmic side. Cell projection, phagocytic cup Note=Associated with the actin cytoskeleton at membrane ruffles and at sites of phagocytosis.

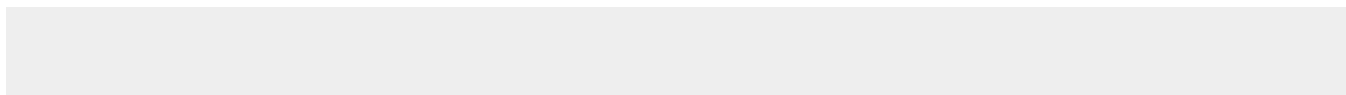
Tissue Location

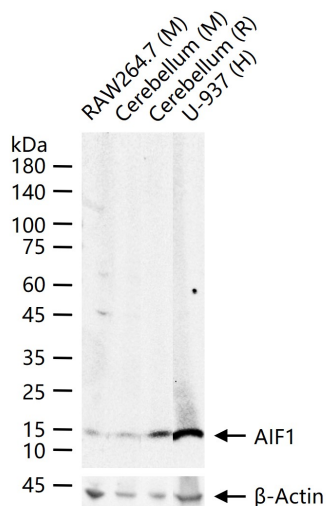
Abundantly expressed in the testis, moderately in the spleen and lymph nodes and at low levels in the liver and thymus Detected in macrophages.

AIF1/Iba1 Rabbit pAb - Protocols

Provided below are standard protocols that you may find useful for product applications.

- [Western Blot](#)
- [Blocking Peptides](#)
- [Dot Blot](#)
- [Immunohistochemistry](#)
- [Immunofluorescence](#)
- [Immunoprecipitation](#)
- [Flow Cytometry](#)
- [Cell Culture](#)

AIF1/Iba1 Rabbit pAb - Images



25 ug total protein per lane of various lysates (see on figure) probed with AIF1 (9A3) polyclonal antibody, unconjugated (AP94829) at 1:1000 dilution and 4°C overnight incubation. Followed by conjugated secondary antibody incubation at r.t. for 60 min.

AIF1/Iba1 Rabbit pAb - Background

This product as supplied is intended for research use only, not for use in human, therapeutic or diagnostic applications.