

CXCL10/IP10 Rabbit pAb
CXCL10/IP10 Rabbit pAb
Catalog # AP94832

Specification

CXCL10/IP10 Rabbit pAb - Product Information

Application	IHC-P, IHC-F, IF, E
Primary Accession	P17515
Reactivity	Rat, Human, Mouse
Host	Rabbit
Clonality	Polyclonal
Calculated MW	10789

CXCL10/IP10 Rabbit pAb - Additional Information

Gene ID 15945

Other Names

C-X-C motif chemokine 10, 10 kDa interferon gamma-induced protein, Gamma-IP10, IP-10, C7, Interferon-gamma induced protein CRG-2, Small-inducible cytokine B10, Cxcl10, Crg2, Ifi10, Inp10, Scyb10

Dilution

IHC-P ~ ~ N/A
IHC-F ~ ~ N/A
IF ~ ~ 1:50 ~ 200
E ~ ~ N/A

Format

0.01M TBS(pH7.4), 0.09% (W/V) sodium azide and 50% Glyce

Storage

Store at -20 °C for one year. Avoid repeated freeze/thaw cycles. When reconstituted in sterile pH 7.4 0.01M PBS or diluent of antibody the antibody is stable for at least two weeks at 2-4 °C.

CXCL10/IP10 Rabbit pAb - Protein Information

Name Cxcl10

Synonyms Crg2, Ifi10, Inp10, Scyb10

Function

Pro-inflammatory cytokine that is involved in a wide variety of processes such as chemotaxis, differentiation, and activation of peripheral immune cells, regulation of cell growth, apoptosis and modulation of angiostatic effects (By similarity) (PubMed:[28623423](http://www.uniprot.org/citations/28623423)). Plays thereby an important role during viral infections by stimulating the activation and migration of immune cells to the infected sites (PubMed:[18624292](http://www.uniprot.org/citations/18624292), PubMed:[19017990](http://www.uniprot.org/citations/19017990)

target="_blank">19017990, PubMed:28468883). Mechanistically, binding of CXCL10 to the CXCR3 receptor activates G protein-mediated signaling and results in downstream activation of phospholipase C-dependent pathway, an increase in intracellular calcium production and actin reorganization. In turn, recruitment of activated Th1 lymphocytes occurs at sites of inflammation (By similarity). Activation of the CXCL10/CXCR3 axis also plays an important role in neurons in response to brain injury for activating microglia, the resident macrophage population of the central nervous system, and directing them to the lesion site. This recruitment is an essential element for neuronal reorganization (PubMed:15456824).

Cellular Location

Secreted {ECO:0000250|UniProtKB:P02778}.

Tissue Location

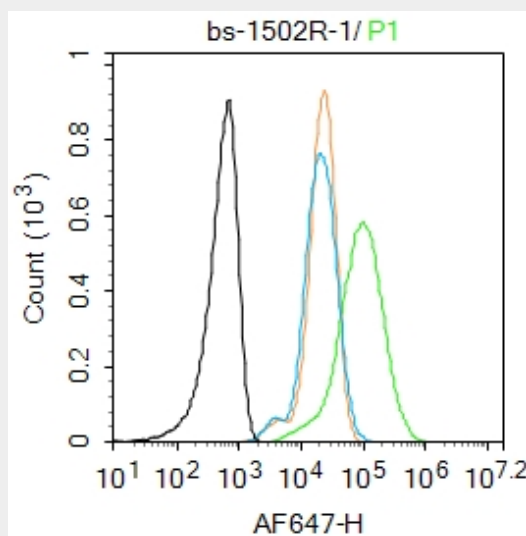
Expressed in the spleen, thymus, lymph nodes and liver (PubMed:8145049). Expressed in astrocytes, microglia, and neurons (PubMed:15456824).

CXCL10/IP10 Rabbit pAb - Protocols

Provided below are standard protocols that you may find useful for product applications.

- [Western Blot](#)
- [Blocking Peptides](#)
- [Dot Blot](#)
- [Immunohistochemistry](#)
- [Immunofluorescence](#)
- [Immunoprecipitation](#)
- [Flow Cytometry](#)
- [Cell Culture](#)

CXCL10/IP10 Rabbit pAb - Images



Blank control: Raw264.7. Primary Antibody (green line): Rabbit Anti-CXCL10/IP10 antibody (AP94832) Dilution: 1 μ g /10⁶ cells; Isotype Control Antibody (orange line): Rabbit IgG . Secondary Antibody : Goat anti-rabbit IgG-AF647 Dilution: 1 μ g /test. Protocol The cells were fixed with 4% PFA (10min at room temperature) and then permeabilized with 0.1% PBST for 20 min at

room temperature. The cells were then incubated in 5% BSA to block non-specific protein-protein interactions for 30 min at room temperature. Cells stained with Primary Antibody for 30 min at room temperature. The secondary antibody used for 40 min at room temperature. Acquisition of 20,000 events was performed.

CXCL10/IP10 Rabbit pAb - Background

This product as supplied is intended for research use only, not for use in human, therapeutic or diagnostic applications.