

Anti-IL-24 Antibody
Rabbit polyclonal antibody to IL-24
Catalog # AP94835**Specification**

Anti-IL-24 Antibody - Product Information

Application	WB, IHC, FC
Primary Accession	Q13007
Reactivity	Human
Host	Rabbit
Clonality	Polyclonal

Anti-IL-24 Antibody - Additional Information**Gene ID** 11009**Other Names**

MDA7; ST16; Interleukin-24; IL-24; Melanoma differentiation-associated gene 7 protein; MDA-7; Suppression of tumorigenicity 16 protein

Dilution

WB~~1/500 - 1/1000

IHC~~1/50 - 1/200

FC~~1/10 - 1/30

Format

Liquid in 0.42% Potassium phosphate, 0.87% Sodium chloride, pH 7.3, 30% glycerol, and 0.01% sodium azide.

Storage

Store at -20 °C. Stable for 12 months from date of receipt

Anti-IL-24 Antibody - Protein Information**Name** IL24**Synonyms** MDA7, ST16**Function**

Multifunctional cytokine mainly produced by T-cells that plays a regulatory role in immune response, tissue homeostasis, host defense, and oncogenesis (PubMed: [25168428](http://www.uniprot.org/citations/25168428), PubMed: [27687232](http://www.uniprot.org/citations/27687232)). Possesses antiviral functions and induces the type I interferon response during influenza infection (PubMed: [27687232](http://www.uniprot.org/citations/27687232)). Signals through two receptor complexes IL20RA/IL20RB or IL20RB/IL22RA1 (PubMed: [11706020](http://www.uniprot.org/citations/11706020), PubMed: [30111632](http://www.uniprot.org/citations/30111632)). In turn,

stimulates the JAK1-STAT3 and MAPK pathways and promotes the secretion of pro-inflammatory mediators including IL8 and MMP1 (PubMed:25168428). Intracellularly, maintains endoplasmic reticulum homeostasis by restricting the eIF2alpha-CHOP pathway- mediated stress signal (By similarity). In addition, acts as a quality control mechanism for the ubiquitin proteasome system by alerting the cell to proteasome dysfunction through activation of PKR/EIF2AK2 (By similarity).

Cellular Location

Secreted.

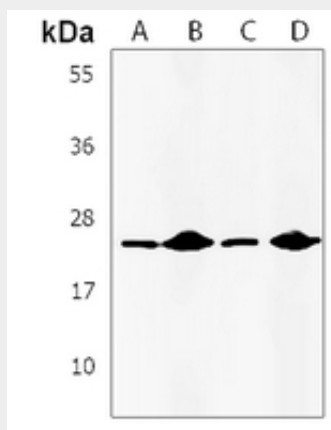
Tissue Location

Up-regulated in melanoma cells induced to terminally differentiate

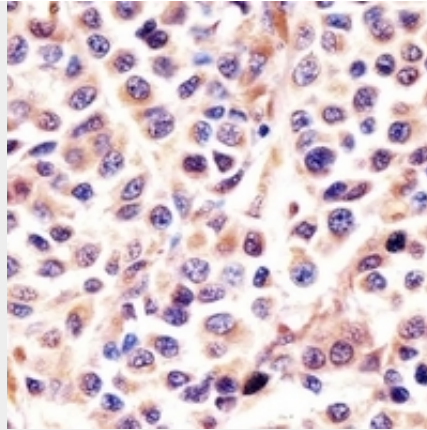
Anti-IL-24 Antibody - Protocols

Provided below are standard protocols that you may find useful for product applications.

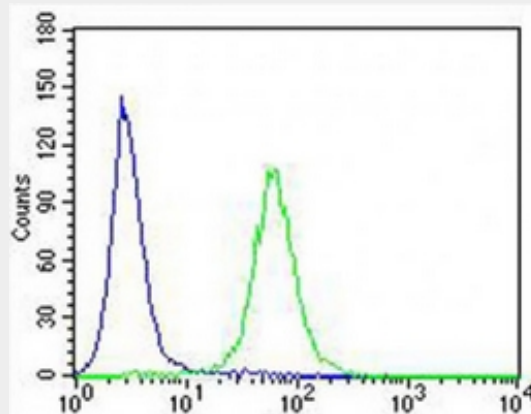
- [Western Blot](#)
- [Blocking Peptides](#)
- [Dot Blot](#)
- [Immunohistochemistry](#)
- [Immunofluorescence](#)
- [Immunoprecipitation](#)
- [Flow Cytometry](#)
- [Cell Culture](#)

Anti-IL-24 Antibody - Images

Western blot analysis of IL-24 expression in Hela (A), Jurkat (B), K562 (C), A431 (D) whole cell lysates. (Predicted band size: 23 kD; Observed band size: 24 kD)



Immunohistochemical analysis of IL-24 staining in human melanoma formalin fixed paraffin embedded tissue section. The section was pre-treated using heat mediated antigen retrieval with sodium citrate buffer (pH 6.0). The section was then incubated with the antibody at room temperature and detected using an HRP conjugated compact polymer system. DAB was used as the chromogen. The section was then counterstained with haematoxylin and mounted with DPX.



Flow cytometric analysis of U2OS cells using Anti-IL-24 Antibody. The cells were fixed with 2% paraformaldehyde (10 min) and then permeabilized with 90% methanol for 10 min. The cells were incubated in 2% bovine serum albumin to block non-specific protein-protein interactions followed by the antibody at 37 °C for 60 min. The secondary antibody Goat Anti-Rabbit IgG (H&L) - AF488 was incubated at 37 °C for 40 min. Isotype control antibody (blue line) was used under the same condition.