

LDHA Recombinant Rabbit mAb
LDHA Recombinant Rabbit mAb
Catalog # AP94838**Specification**

LDHA Recombinant Rabbit mAb - Product Information

| | |
|----------------------------------|---|
| Application | WB, IHC-P, IHC-F, IF, FC, ICC, IP |
| Primary Accession | P00338 |
| Reactivity | Rat, Human, Mouse |
| Host | Rabbit |
| Clonality | Recombinant |
| Calculated MW | 37 KDa |
| Physical State | Liquid |
| Immunogen | KLH conjugated synthetic peptide derived from human LDHA |
| Isotype | IgG |
| Purity | |
| affinity purified by Protein A | |
| Buffer | 10mM phosphate buffered saline(pH 7.4) with 150mM sodium chloride, 0.05% BSA, 0.02% sodium azide and 50% glycerol. |
| SUBCELLULAR LOCATION | Cytoplasm. |
| SIMILARITY | Belongs to the LDH/MDH superfamily. LDH family. |
| SUBUNIT | Homotetramer. |
| Post-translational modifications | ISGylated. |
| DISEASE | Glycogen storage disease 11 (GSD11) [MIM:612933]: A metabolic disorder that results in exertional myoglobinuria, pain, cramps and easy fatigue. Note=The disease is caused by mutations affecting the gene represented in this entry. |
| Important Note | This product as supplied is intended for research use only, not for use in human, therapeutic or diagnostic applications. |

LDHA Recombinant Rabbit mAb - Additional Information**Gene ID** 3939**Other Names**

L-lactate dehydrogenase A chain, LDH-A, 1.1.1.27, Cell proliferation-inducing gene 19 protein, LDH muscle subunit, LDH-M, Renal carcinoma antigen NY-REN-59, LDHA (http://www.genenames.org/cgi-bin/gene_symbol_report?hgnc_id=6535)
HGNC:6535

Target/Specificity

Metabolism of carbohydrates, Dehydrogenase Kits, NADP/NADPH, Carbohydrate metabolism, Energy Metabolism, Cancer, Energy Metabolism

Dilution

WB~~1:1000<br \>IHC-P~~N/A<br \>IHC-F~~N/A<br \>IF~~1:50~200<br \>FC~~1:10~50<br \>ICC~~N/A<br \>IP~~N/A

Format

0.01M TBS(pH7.4), 0.09% (W/V) sodium azide and 50% Glyce

Storage

Store at -20 °C for one year. Avoid repeated freeze/thaw cycles. When reconstituted in sterile pH 7.4 0.01M PBS or diluent of antibody the antibody is stable for at least two weeks at 2-4 °C.

LDHA Recombinant Rabbit mAb - Protein Information

Name LDHA ([HGNC:6535](#))

Function

Interconverts simultaneously and stereospecifically pyruvate and lactate with concomitant interconversion of NADH and NAD(+).

Cellular Location

Cytoplasm.

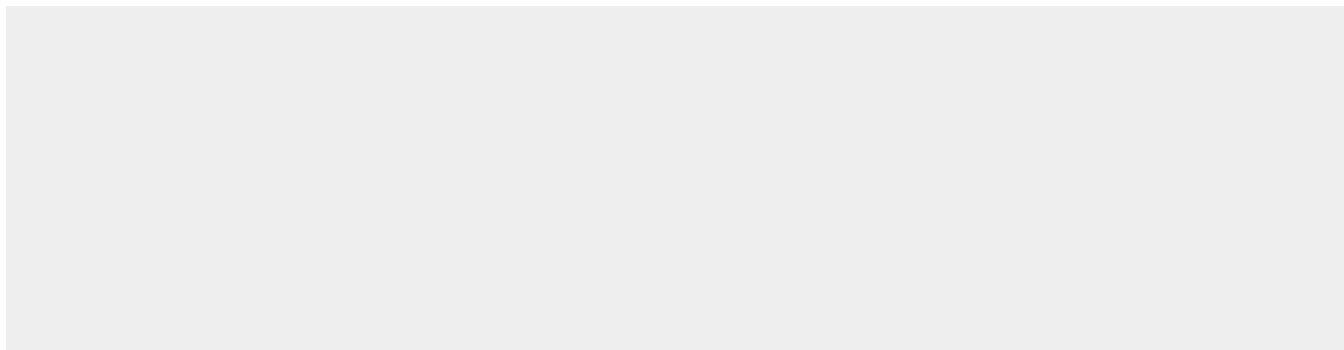
Tissue Location

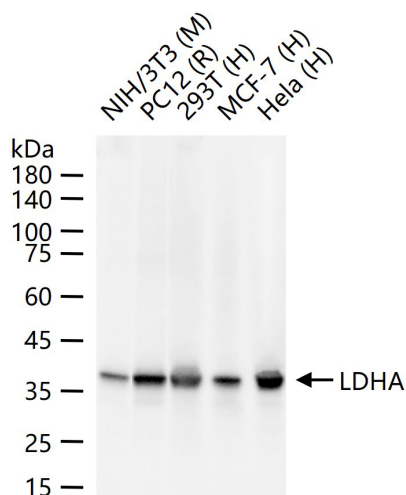
Predominantly expressed in anaerobic tissues such as skeletal muscle and liver.

LDHA Recombinant Rabbit mAb - Protocols

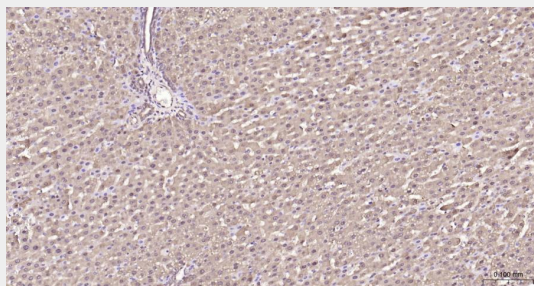
Provided below are standard protocols that you may find useful for product applications.

- [Western Blot](#)
- [Blocking Peptides](#)
- [Dot Blot](#)
- [Immunohistochemistry](#)
- [Immunofluorescence](#)
- [Immunoprecipitation](#)
- [Flow Cytometry](#)
- [Cell Culture](#)

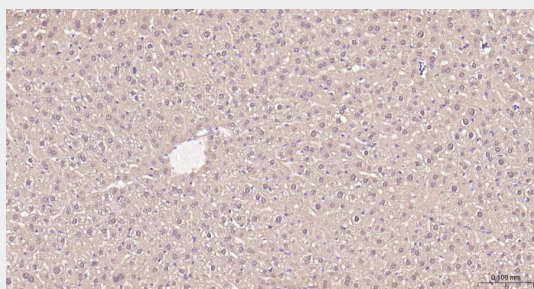
LDHA Recombinant Rabbit mAb - Images



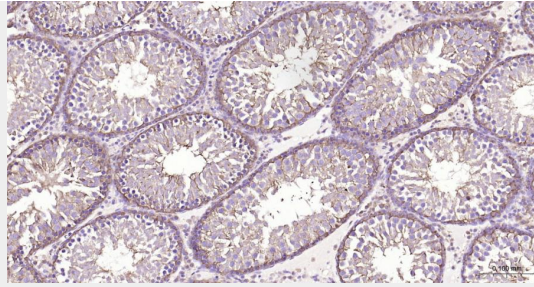
25 ug total protein per lane of various lysates (see on figure) probed with LDHA monoclonal antibody, unconjugated (AP94838) at 1:1000 dilution and 4°C overnight incubation. Followed by conjugated secondary antibody incubation at r.t. for 60 min.



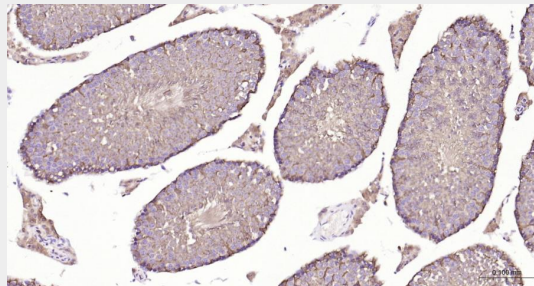
Paraformaldehyde-fixed, paraffin embedded Rat Liver; Antigen retrieval by boiling in sodium citrate buffer (pH6.0) for 15 min; Antibody incubation with LDHA Monoclonal Antibody, Unconjugated (AP94838) at 1:200 overnight at 4°C, followed by conjugation to the bs-0295G-HRP and DAB (C-0010) staining.



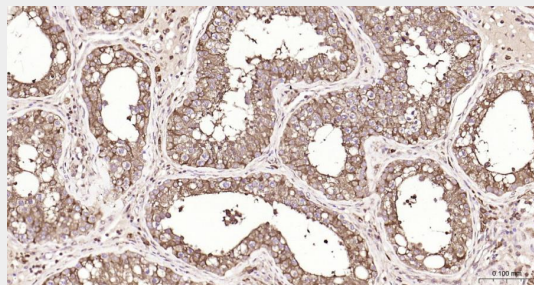
Paraformaldehyde-fixed, paraffin embedded Mouse Liver; Antigen retrieval by boiling in sodium citrate buffer (pH6.0) for 15 min; Antibody incubation with LDHA Monoclonal Antibody, Unconjugated (AP94838) at 1:200 overnight at 4°C, followed by conjugation to the bs-0295G-HRP and DAB (C-0010) staining.



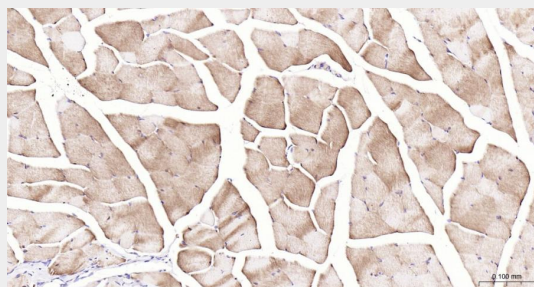
Paraformaldehyde-fixed, paraffin embedded Rat Testicles; Antigen retrieval by boiling in sodium citrate buffer (pH6.0) for 15 min; Antibody incubation with LDHA Monoclonal Antibody, Unconjugated(AP94838) at 1:200 overnight at 4°C, followed by conjugation to the bs-0295G-HRP and DAB (C-0010) staining.



Paraformaldehyde-fixed, paraffin embedded Mouse Testicles; Antigen retrieval by boiling in sodium citrate buffer (pH6.0) for 15 min; Antibody incubation with LDHA Monoclonal Antibody, Unconjugated(AP94838) at 1:200 overnight at 4°C, followed by conjugation to the bs-0295G-HRP and DAB (C-0010) staining.



Paraformaldehyde-fixed, paraffin embedded Human Testicles; Antigen retrieval by boiling in sodium citrate buffer (pH6.0) for 15 min; Antibody incubation with LDHA Monoclonal Antibody, Unconjugated(AP94838) at 1:200 overnight at 4°C, followed by conjugation to the bs-0295G-HRP and DAB (C-0010) staining.



Paraformaldehyde-fixed, paraffin embedded Rat Skeletal muscle; Antigen retrieval by boiling in sodium citrate buffer (pH6.0) for 15 min; Antibody incubation with LDHA Monoclonal Antibody, Unconjugated(AP94838) at 1:200 overnight at 4°C, followed by conjugation to the bs-0295G-HRP and DAB (C-0010) staining.

LDHA Recombinant Rabbit mAb - Background

This product as supplied is intended for research use only, not for use in human, therapeutic or diagnostic applications.