

LDHA Rabbit pAb
LDHA Rabbit pAb
Catalog # AP94839**Specification**

LDHA Rabbit pAb - Product Information

Application	WB, IHC-P, IHC-F, IF
Primary Accession	P00338
Reactivity	Rat, Human, Mouse
Host	Rabbit
Clonality	Polyclonal
Calculated MW	37 KDa
Physical State	Liquid
Immunogen	KLH conjugated synthetic peptide derived from human LDHA
Isotype	IgG
Purity	
affinity purified by Protein A	
Buffer	0.01M TBS (pH7.4) with 1% BSA, 0.02% Proclin300 and 50% Glycerol.
SUBCELLULAR LOCATION	Cytoplasm.
SIMILARITY	Belongs to the LDH/MDH superfamily. LDH family.
SUBUNIT	Homotetramer.
Post-translational modifications	ISGylated.
DISEASE	Glycogen storage disease 11 (GSD11) [MIM:612933]: A metabolic disorder that results in exertional myoglobinuria, pain, cramps and easy fatigue. Note=The disease is caused by mutations affecting the gene represented in this entry.
Important Note	This product as supplied is intended for research use only, not for use in human, therapeutic or diagnostic applications.

LDHA Rabbit pAb - Additional Information**Gene ID** 3939**Other Names**

L-lactate dehydrogenase A chain, LDH-A, 1.1.1.27, Cell proliferation-inducing gene 19 protein, LDH muscle subunit, LDH-M, Renal carcinoma antigen NY-REN-59, LDHA (http://www.genenames.org/cgi-bin/gene_symbol_report?hgnc_id=6535)
HGNC:6535

Target/Specificity

Metabolism of carbohydrates, Dehydrogenase Kits, NADP/NADPH, Carbohydrate metabolism, Energy Metabolism, Cancer, Energy Metabolism

Dilution

WB~~1:1000<br \><span class
="dilution_IHC-P">IHC-P~~N/A<br \><span class
="dilution_IHC-F">IHC-F~~N/A<br \>IF~~1:50~200

Format

0.01M TBS(pH7.4), 0.09% (W/V) sodium azide and 50% Glyce

Storage

Store at -20 °C for one year. Avoid repeated freeze/thaw cycles. When reconstituted in sterile pH 7.4 0.01M PBS or diluent of antibody the antibody is stable for at least two weeks at 2-4 °C.

LDHA Rabbit pAb - Protein Information

Name LDHA ([HGNC:6535](#))

Function

Interconverts simultaneously and stereospecifically pyruvate and lactate with concomitant interconversion of NADH and NAD(+).

Cellular Location

Cytoplasm.

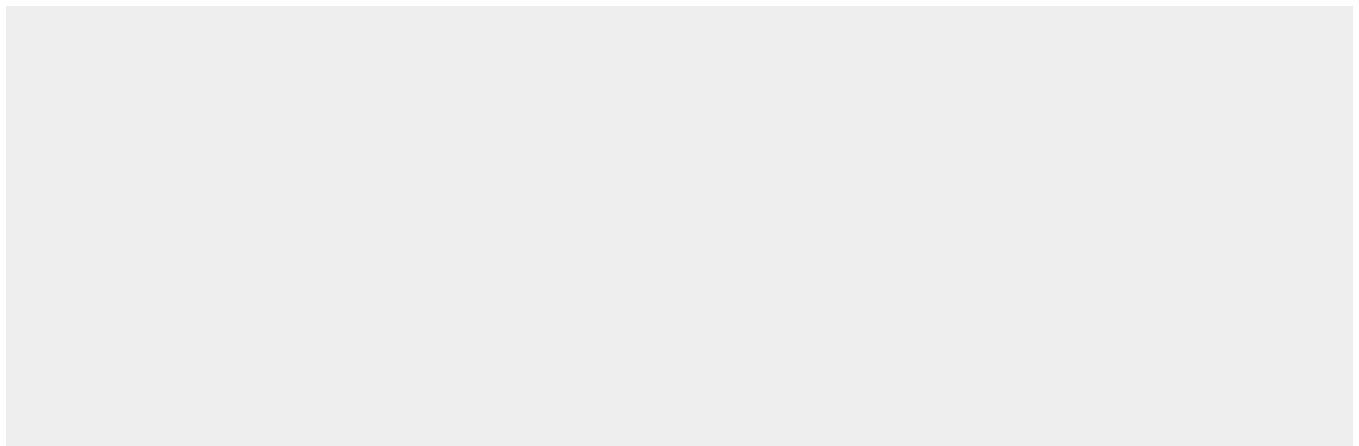
Tissue Location

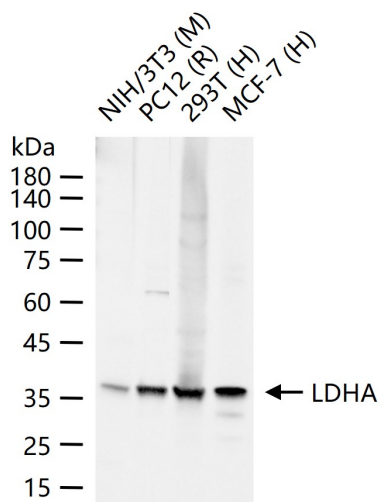
Predominantly expressed in anaerobic tissues such as skeletal muscle and liver.

LDHA Rabbit pAb - Protocols

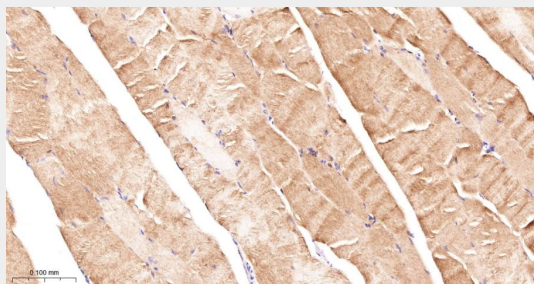
Provided below are standard protocols that you may find useful for product applications.

- [Western Blot](#)
- [Blocking Peptides](#)
- [Dot Blot](#)
- [Immunohistochemistry](#)
- [Immunofluorescence](#)
- [Immunoprecipitation](#)
- [Flow Cytometry](#)
- [Cell Culture](#)

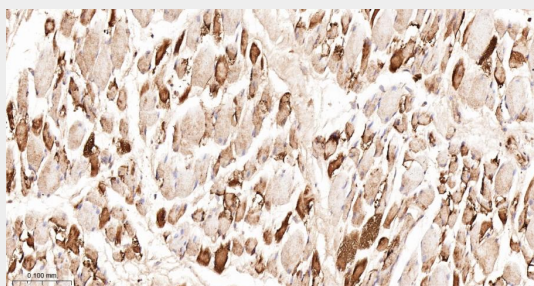
LDHA Rabbit pAb - Images



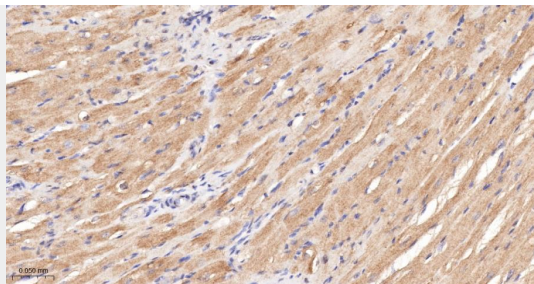
25 ug total protein per lane of various lysates (see on figure) probed with LDHA polyclonal antibody, unconjugated (AP94839) at 1:1000 dilution and 4°C overnight incubation. Followed by conjugated secondary antibody incubation at r.t. for 60 min.



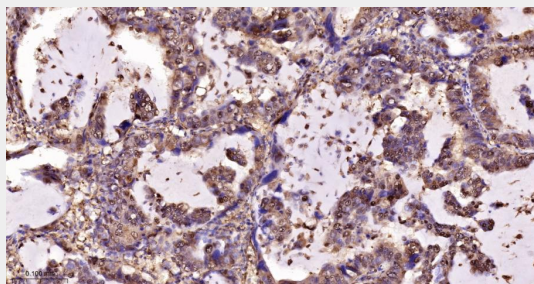
Paraformaldehyde-fixed, paraffin embedded Mouse Skeletal muscle; Antigen retrieval by boiling in sodium citrate buffer (pH6.0) for 15 min; The section was incubated with LDHA Polyclonal Antibody, Unconjugated (AP94839) at 1:200 overnight at 4°C, followed by conjugation to the bs-0295G-HRP and DAB (C-0010) staining.



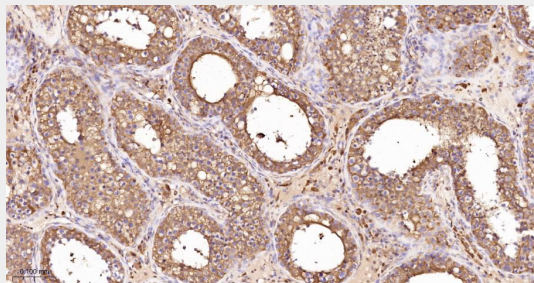
Paraformaldehyde-fixed, paraffin embedded Human Skeletal muscle; Antigen retrieval by boiling in sodium citrate buffer (pH6.0) for 15 min; The section was incubated with LDHA Polyclonal Antibody, Unconjugated (AP94839) at 1:200 overnight at 4°C, followed by conjugation to the bs-0295G-HRP and DAB (C-0010) staining.



Paraformaldehyde-fixed, paraffin embedded Mouse Heart; Antigen retrieval by boiling in sodium citrate buffer (pH6.0) for 15 min; The section was incubated with LDHA Polyclonal Antibody, Unconjugated (AP94839) at 1:200 overnight at 4°C, followed by conjugation to the bs-0295G-HRP and DAB (C-0010) staining.



Paraformaldehyde-fixed, paraffin embedded Human Lung Cancer; Antigen retrieval by boiling in sodium citrate buffer (pH6.0) for 15 min; The section was incubated with LDHA Polyclonal Antibody, Unconjugated (AP94839) at 1:200 overnight at 4°C, followed by conjugation to the bs-0295G-HRP and DAB (C-0010) staining.



Paraformaldehyde-fixed, paraffin embedded Human Testicles; Antigen retrieval by boiling in sodium citrate buffer (pH6.0) for 15 min; The section was incubated with LDHA Polyclonal Antibody, Unconjugated (AP94839) at 1:200 overnight at 4°C, followed by conjugation to the bs-0295G-HRP and DAB (C-0010) staining.

LDHA Rabbit pAb - Background

This product as supplied is intended for research use only, not for use in human, therapeutic or diagnostic applications.