

RAB42 Rabbit pAb
RAB42 Rabbit pAb
Catalog # AP94842**Specification**

RAB42 Rabbit pAb - Product Information

Application	FC
Primary Accession	Q8N4Z0
Reactivity	Human
Host	Rabbit
Clonality	Polyclonal
Calculated MW	11 KDa
Physical State	Liquid
Immunogen	KLH conjugated synthetic peptide derived from human RAB42
Epitope Specificity	31-105/105
Isotype	IgG
Purity	
affinity purified by Protein A	
Buffer	Preservative: 0.02% Proclin300, Constituents: 1% BSA, 0.01M PBS, pH7.4.
SUBCELLULAR LOCATION	Membrane.
SIMILARITY	Belongs to the small GTPase superfamily. Rab family.
Important Note	This product as supplied is intended for research use only, not for use in human, therapeutic or diagnostic applications.

RAB42 Rabbit pAb - Additional Information**Gene ID** 115273**Other Names**

Ras-related protein Rab-42, 3.6.5.2, RAB42 (http://www.genenames.org/cgi-bin/gene_symbol_report?hgnc_id=28702)
HGNC:28702

Dilution

FC~~1:10~50

Format

0.01M TBS(pH7.4), 0.09% (W/V) sodium azide and 50% Glyce

Storage

Store at -20 °C for one year. Avoid repeated freeze/thaw cycles. When reconstituted in sterile pH 7.4 0.01M PBS or diluent of antibody the antibody is stable for at least two weeks at 2-4 °C.

RAB42 Rabbit pAb - Protein Information

Name RAB42 ([HGNC:28702](#))

Function

The small GTPases Rab are key regulators of intracellular membrane trafficking, from the formation of transport vesicles to their fusion with membranes. Rabs cycle between an inactive GDP-bound form and an active GTP-bound form that is able to recruit to membranes different sets of downstream effectors directly responsible for vesicle formation, movement, tethering and fusion (By similarity). The physiological function of RAB42 remains undefined (Probable).

Cellular Location

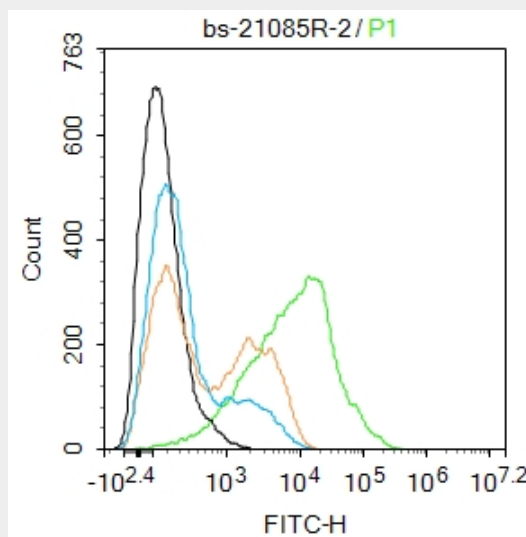
Membrane {ECO:0000250|UniProtKB:P62820}; Lipid- anchor {ECO:0000250|UniProtKB:P62820}

RAB42 Rabbit pAb - Protocols

Provided below are standard protocols that you may find useful for product applications.

- [Western Blot](#)
- [Blocking Peptides](#)
- [Dot Blot](#)
- [Immunohistochemistry](#)
- [Immunofluorescence](#)
- [Immunoprecipitation](#)
- [Flow Cytometry](#)
- [Cell Culture](#)

RAB42 Rabbit pAb - Images



Blank control:THP-1. Primary Antibody (green line): Rabbit Anti-RAB42 antibody (AP94842) Dilution: 2 µg /10⁶ cells; Isotype Control Antibody (orange line): Rabbit IgG . Secondary Antibody : Goat anti-rabbit IgG-FITC Dilution: 1 µg /test. Protocol The cells were incubated in 5%BSA to block non-specific protein-protein interactions for 30 min at room temperature .Cells stained with Primary Antibody for 30 min at room temperature. The secondary antibody used for 40 min at room temperature. Acquisition of 20,000 events was performed.

RAB42 Rabbit pAb - Background

This product as supplied is intended for research use only, not for use in human, therapeutic or diagnostic applications.