

ING5 Antibody (Center)
Affinity Purified Rabbit Polyclonal Antibody (Pab)
Catalog # AP9485c

Specification

ING5 Antibody (Center) - Product Information

Application	WB,E
Primary Accession	Q8WYH8
Reactivity	Human
Host	Rabbit
Clonality	Polyclonal
Isotype	Rabbit IgG
Calculated MW	27751
Antigen Region	91-119

ING5 Antibody (Center) - Additional Information

Gene ID 84289

Other Names

Inhibitor of growth protein 5, p28ING5, ING5

Target/Specificity

This ING5 antibody is generated from rabbits immunized with a KLH conjugated synthetic peptide between 91-119 amino acids from the Central region of human ING5.

Dilution

WB~~1:1000

E~~Use at an assay dependent concentration.

Format

Purified polyclonal antibody supplied in PBS with 0.09% (W/V) sodium azide. This antibody is purified through a protein A column, followed by peptide affinity purification.

Storage

Maintain refrigerated at 2-8°C for up to 2 weeks. For long term storage store at -20°C in small aliquots to prevent freeze-thaw cycles.

Precautions

ING5 Antibody (Center) is for research use only and not for use in diagnostic or therapeutic procedures.

ING5 Antibody (Center) - Protein Information

Name ING5

Function Component of the HBO1 complex, which specifically mediates acetylation of histone H3 at 'Lys-14' (H3K14ac) and, to a lower extent, acetylation of histone H4 (PubMed:[24065767](#)).

Component of the MOZ/MORF complex which has a histone H3 acetyltransferase activity (PubMed:[16387653](#)). Through chromatin acetylation it may regulate DNA replication and may function as a transcriptional coactivator (PubMed:[12750254](#), PubMed:[16387653](#)). Inhibits cell growth, induces a delay in S-phase progression and enhances Fas-induced apoptosis in an INCA1-dependent manner (PubMed:[21750715](#)).

Cellular Location

Nucleus. Chromosome. Note=Localizes to transcription start sites.

Tissue Location

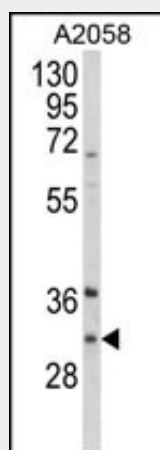
Down-regulated in bone marrow cells in acute myeloid leukemia patients as compared with normal bone marrow cells

ING5 Antibody (Center) - Protocols

Provided below are standard protocols that you may find useful for product applications.

- [Western Blot](#)
- [Blocking Peptides](#)
- [Dot Blot](#)
- [Immunohistochemistry](#)
- [Immunofluorescence](#)
- [Immunoprecipitation](#)
- [Flow Cytometry](#)
- [Cell Culture](#)

ING5 Antibody (Center) - Images



Western blot analysis of ING5 Antibody (Center) (Cat. #AP9485c) in A2058 cell line lysates (35ug/lane). ING5 (arrow) was detected using the purified Pab.

ING5 Antibody (Center) - Background

ING5 is similar to ING1, a tumor suppressor protein that can interact with TP53, inhibit cell growth, and induce apoptosis. This protein contains a PHD-finger, which is a common motif in proteins involved in chromatin remodeling. This protein can bind TP53 and EP300/p300, a component of the histone acetyl transferase complex, suggesting its involvement in TP53-dependent regulatory pathway. [provided by RefSeq].

ING5 Antibody (Center) - References

Ullah, M., et al. Mol. Cell. Biol. 28(22):6828-6843(2008)
Champagne, K.S., et al. Proteins 72(4):1371-1376(2008)
Olsen, J.V., et al. Cell 127(3):635-648(2006)